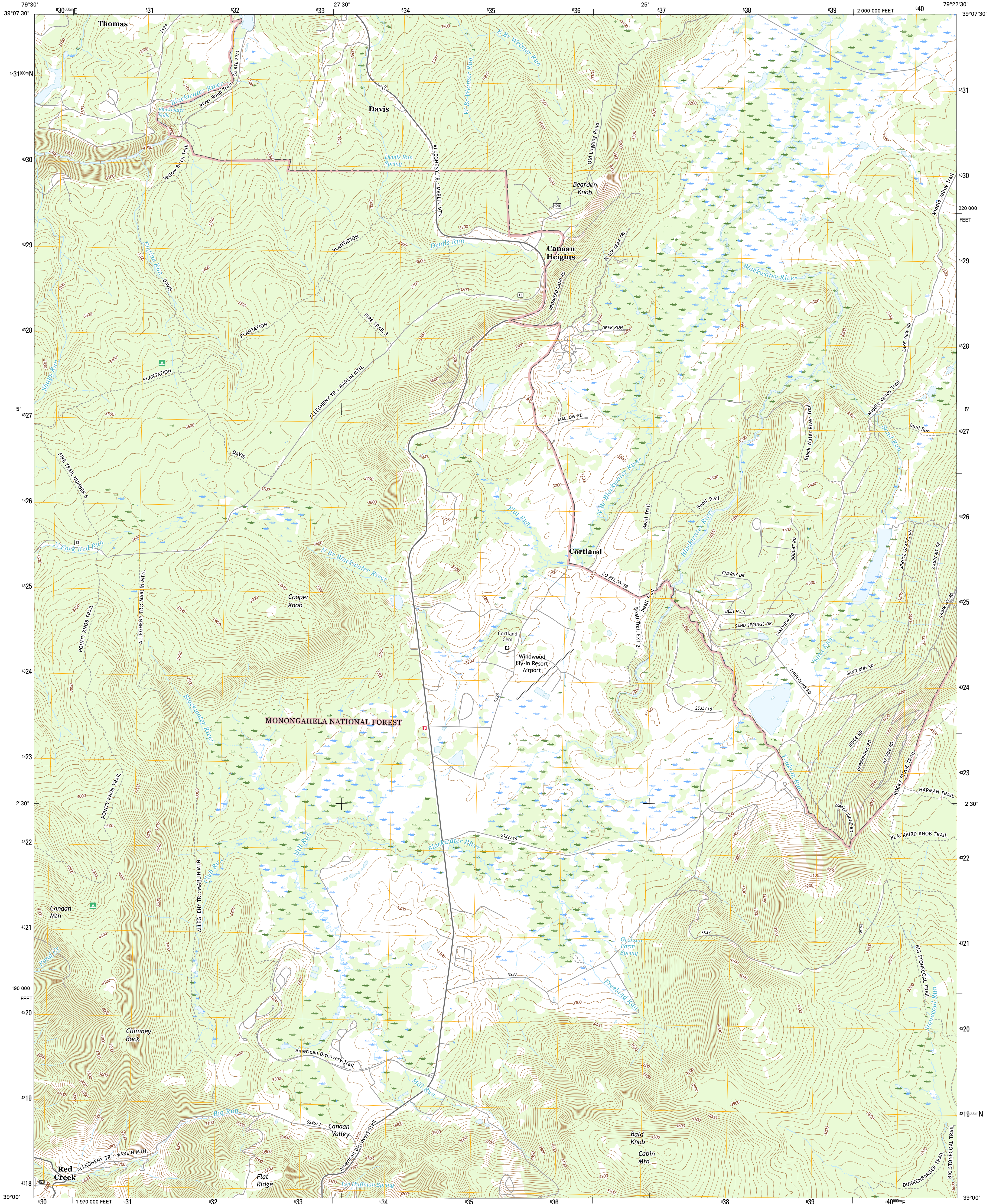




U.S. DEPARTMENT OF THE INTERIOR
U.S. GEOLOGICAL SURVEY



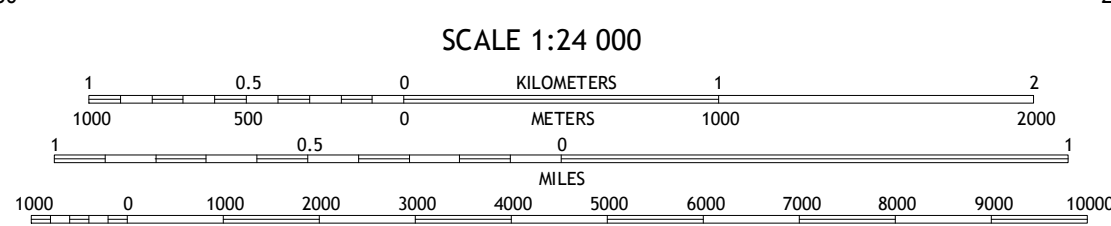
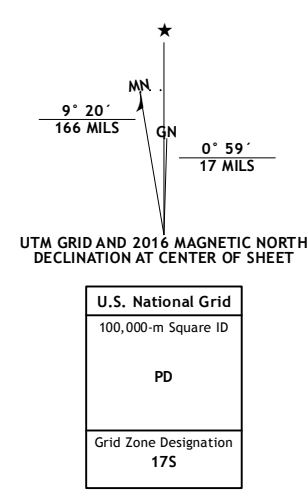
BLACKWATER FALLS QUADRANGLE
WEST VIRGINIA-TUCKER CO.
7.5-MINUTE SERIES



Produced by the United States Geological Survey
North American Datum of 1983 (NAD83)
World Geodetic System of 1984 (WGS84) Projection and
1 000-meter grid: Universal Transverse Mercator, Zone 17S
10 000-foot ticks: West Virginia Coordinate System of 1983
(north zone)

This map is not a legal document. Boundaries may be
generalized for this map scale. Private lands within government
reservations may not be shown. Obtain permission before
entering private lands.

Imagery: N.A.I.P., December 2014
Roads: U.S. Census Bureau, 2015 - 2016
Roads within US Forest Service Lands: FSTopo Data
with limited Forest Service updates, 2012 - 2016
Names: G.N.S., 2016
Hydrography: National Hydrography Dataset, 2014
Contours: National Elevation Dataset, 2006
Boundaries: Multiple sources; see metadata file 1972 - 2016
Wetlands: FWS National Wetlands Inventory 1977 - 2014



ROAD CLASSIFICATION

Expressway	Local Connector
Secondary Hwy	Local Road
Ramp	4WD
Interstate Route	US Route
FS Primary Route	FS Passenger Route
	FS High Clearance Route

Check with local Forest Service unit
for current travel conditions and restrictions.

1	2	3
4	5	6
7	8	9

ADJOINING QUADRANGLES

- 1 Lead Mine
- 2 Davis
- 3 Mount Storm Lake
- 4 Mozk Mountain
- 5 Blackbird Knob
- 6 Harman
- 7 Lanewille
- 8 Hopeville

BLACKWATER FALLS, WV
2016

