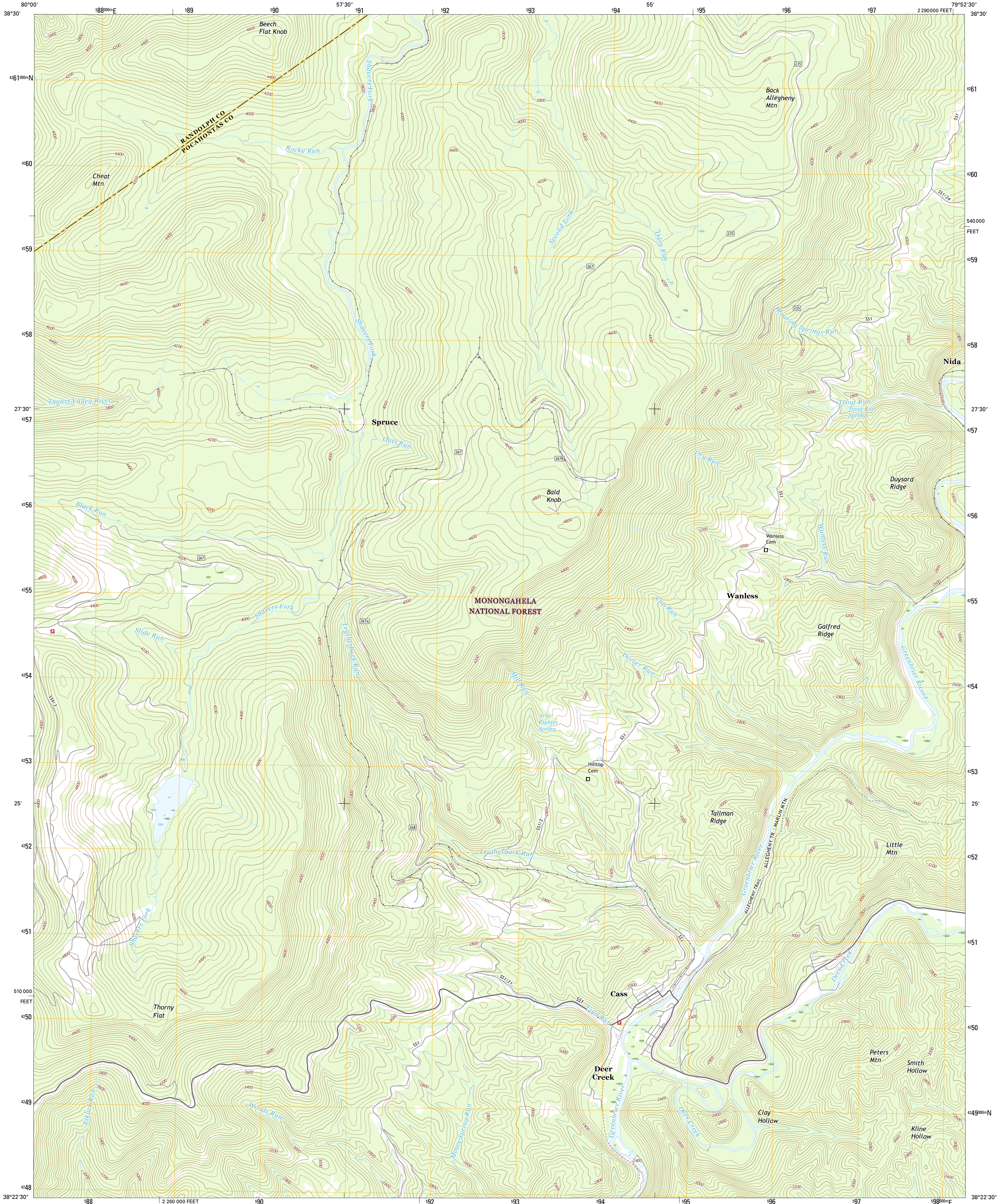




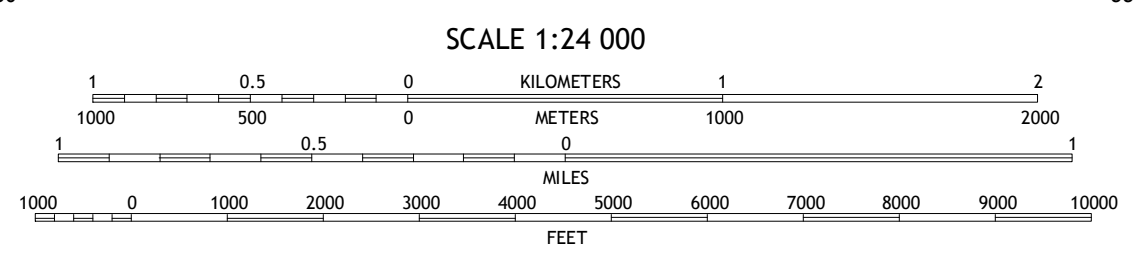
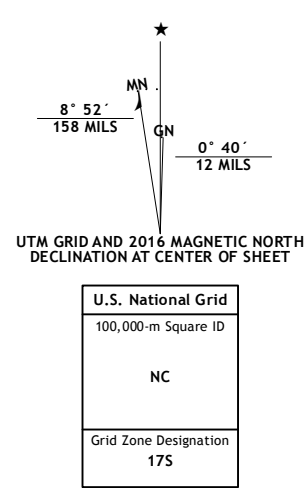
U.S. DEPARTMENT OF THE INTERIOR
U.S. GEOLOGICAL SURVEY



CASS QUADRANGLE
WEST VIRGINIA
7.5-MINUTE SERIES



Produced by the United States Geological Survey
 North American Datum of 1983 (NAD83)
 World Geodetic System of 1984 (WGS84). Projection and
 1 000-meter grid: Universal Transverse Mercator, Zone 17S
 10 000-foot ticks: West Virginia Coordinate System of 1983
 (south zone)
 This map is not a legal document. Boundaries may be
 generalized for this map scale. Private lands within government
 reservations may not be shown. Obtain permission before
 entering private lands.
 Imagery:.....NIP, December 2014
 Roads:.....U.S. Census Bureau, 2015 - 2016
 Roads within US Forest Service Lands:.....FSTopo Data
 with limited Forest Service updates, 2012 - 2016
 Names:.....GNIS, 2016
 Hydrography:.....National Hydrography Dataset, 2014
 Contours:.....National Elevation Dataset, 2006
 Boundaries:.....Multiple sources; see metadata file 1972 - 2016
 Wetlands:.....FWS National Wetlands Inventory 1977 - 2014



ROAD CLASSIFICATION

Expressway	Local Connector
Secondary Hwy	Local Road
Ramp	4WD
Interstate Route	US Route
FS Primary Route	FS Passenger Route
	FS High Clearance Route

Check with local Forest Service unit
for current travel conditions and restrictions.

ADJOINING QUADRANGLES

1	2	3
4	5	6
7	8	

- 1 Valley Head
- 2 Snyder Knob
- 3 Durbin
- 4 Mingo
- 5 Green Bank
- 6 Edray
- 7 Clover Lick
- 8 Paddy Knob

CASS, WV
2016

