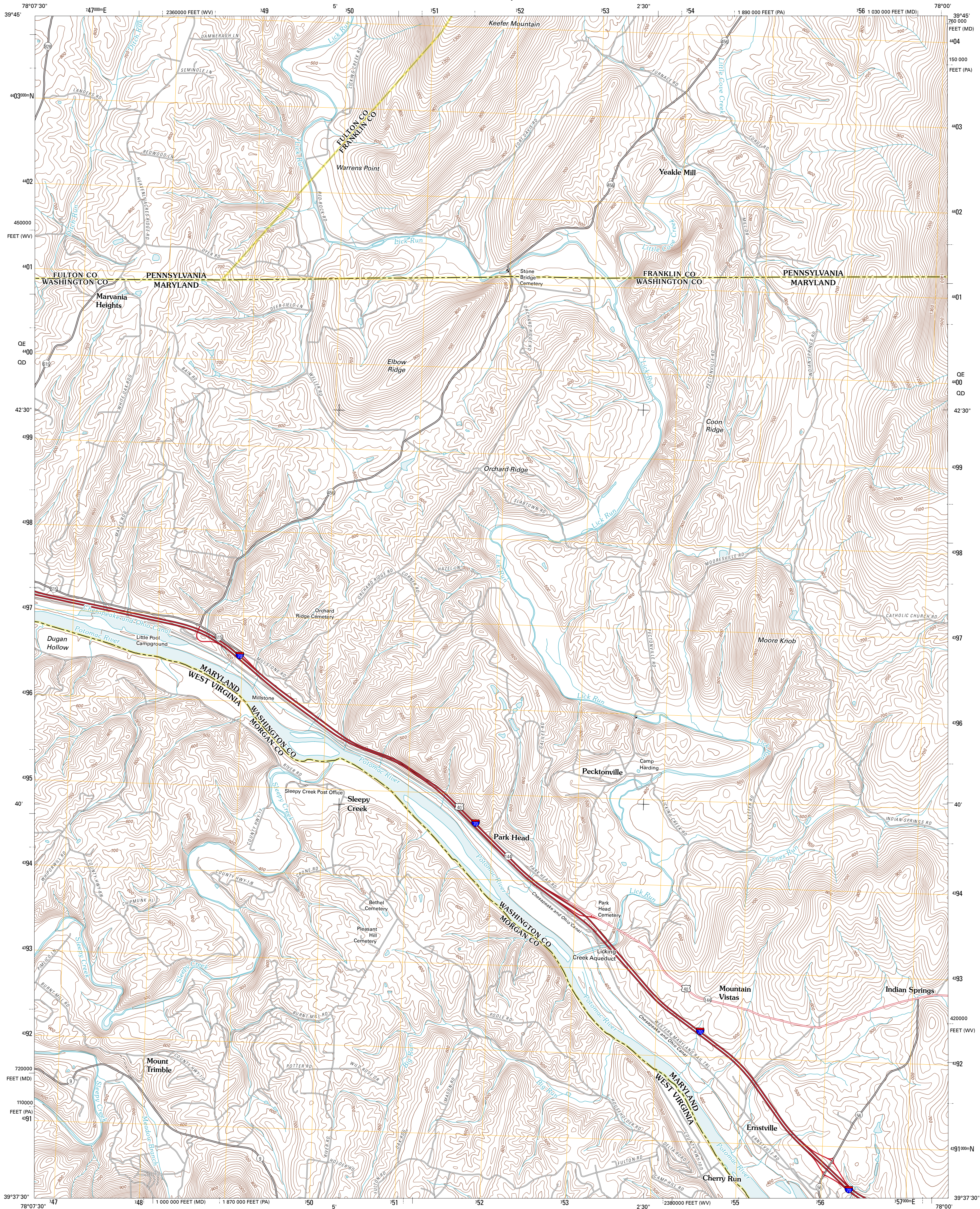




U.S. DEPARTMENT OF THE INTERIOR
U. S. GEOLOGICAL SURVEY

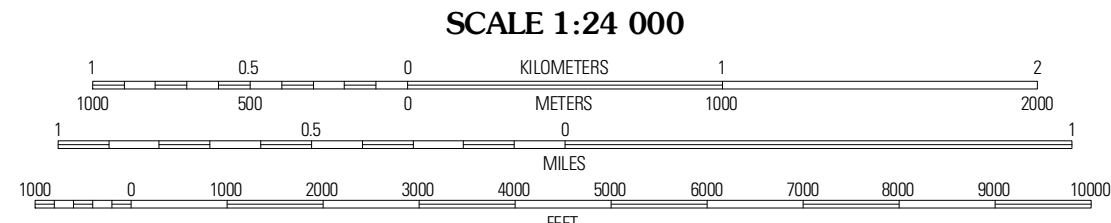
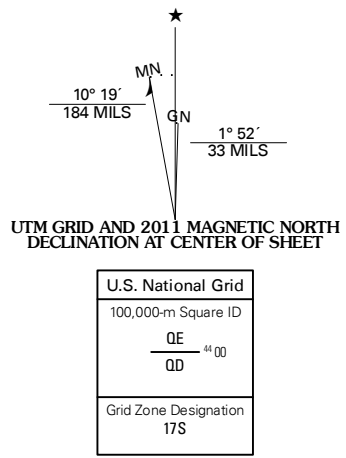


CHERRY RUN QUADRANGLE
WEST VIRGINIA-MARYLAND-PENNSYLVANIA
7.5-MINUTE SERIES

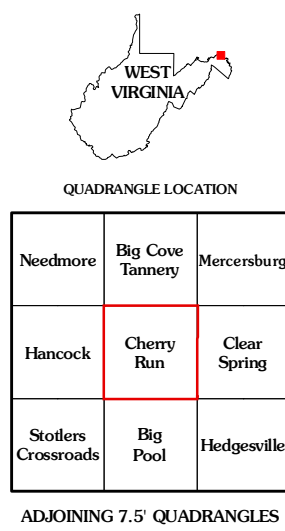


Produced by the United States Geological Survey
North American Datum of 1983 (NAD83)
World Geodetic System of 1984 (WGS84). Projection and
1 000-meter grid: Universal Transverse Mercator, Zone 17S
10 000-foot ticks: Maryland Coordinate System of 1983,
West Virginia Coordinate System of 1983 (north zone),
Pennsylvania Coordinate System of 1983 (south zone)

Imagery.....NAIP, August 2009
Roads.....©2006-2010 Tele Atlas
Names.....GNSS, 2010
Hydrography.....National Hydrography Dataset, 2009
Contours.....National Elevation Dataset, 2003
Boundaries.....Census, IBWC, IBC, USGS, 1972 - 2010



CONTOUR INTERVAL 20 FEET
NORTH AMERICAN VERTICAL DATUM OF 1988
This map was produced to conform with version 0.5.10
of the USGS US Topo Product Standard.
A metadata file associated with this product is draft version 0.5.15



ROAD CLASSIFICATION
Interstate Route
US Route
Ramp
State Route
Local Road
4WD

CHERRY RUN, WV-MD-PA
2011