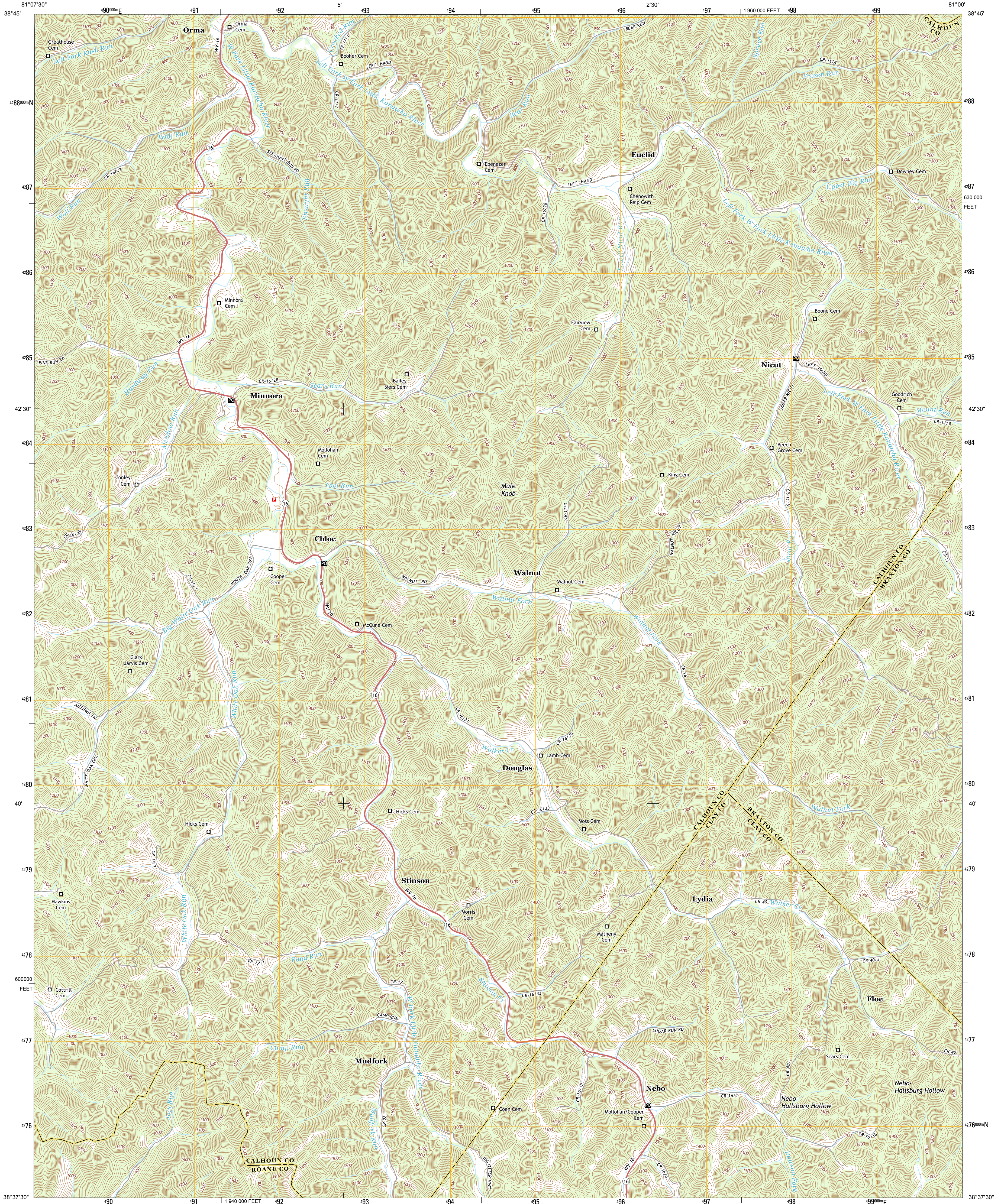




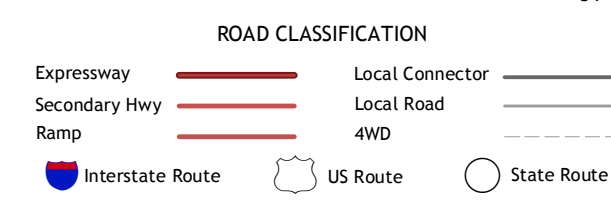
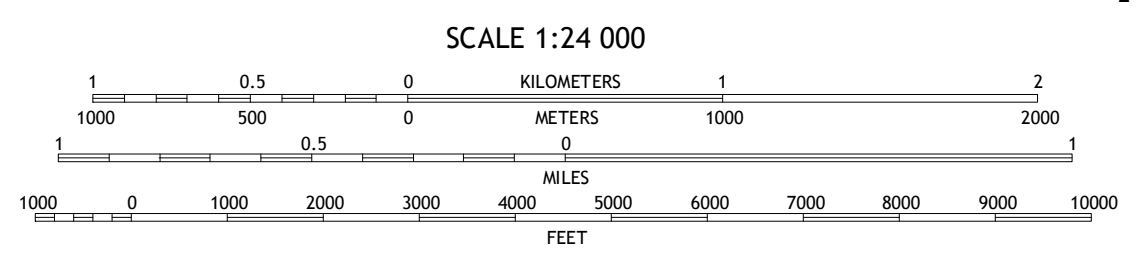
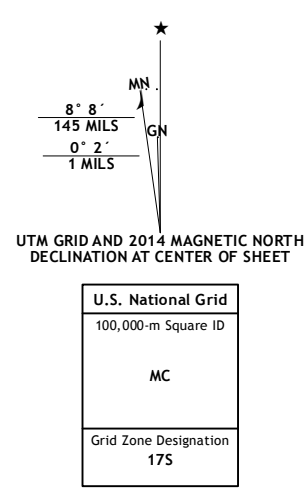
U.S. DEPARTMENT OF THE INTERIOR
U.S. GEOLOGICAL SURVEY



CHLOE QUADRANGLE
WEST VIRGINIA
7.5-MINUTE SERIES



Produced by the United States Geological Survey
North American Datum of 1983 (NAD83)
World Geodetic System of 1984 (WGS84). Projection and
10 000-foot ticks: West Virginia Coordinate System of 1983
(south zone)
This map is not a legal document. Boundaries may be
generalized for this map scale. Private lands within government
reservations may not be shown. Obtain permission before
entering private lands.
Imagery.....NAIP, July 2011
Roads.....HERE, ©2013
Names.....GNIS, 2013
Hydrography.....National Hydrography Dataset, 2011
Contours.....National Elevation Dataset, 2006
Boundaries.....Multiple sources; see metadata file 1972 - 2013



1	2	3
4	5	6
7	8	

ADJOINING QUADRANGLES

1 Arnoldsburg
2 Millstone
3 Normantown
4 Tariff
5 Rosedale
6 Newton
7 Hydale
8 Strange Creek

CHLOE, WV
2014

