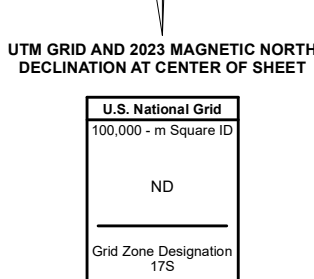
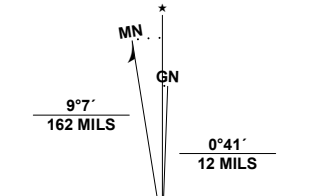


Produced by the United States Geological Survey

North American Datum of 1983 (NAD83)
World Geodetic System of 1984 (WGS84). Projection and
1 000-meter grid/Universal Transverse Mercator, Zone 17S
This map is not a legal document. Boundaries may be
generalized for this map scale. Private lands within government
reservations may not be shown. Obtain permission before
entering private lands.

Imagery.....NAIP, July 2020 - September 2020
Roads.....U.S. Census Bureau, 2016
Names.....GNIS, 1980 - 2022
Hydrography.....National Hydrography Dataset, 2019
Contours.....National Elevation Dataset, 2006
Boundaries.....Multiple sources; see metadata file 2021 - 2022
Wetlands.....FWS National Wetlands Inventory 1976



CONTOUR INTERVAL 20 FEET
NORTH AMERICAN DATUM OF 1983
This map was produced to conform with the
National Geospatial Program US Topo Product Standard.



QUADRANGLE LOCATION

1	2	3
4	5	6
7	8	9

ADJOINING QUADRANGLES

- 1 Rivesville
- 2 Morgantown South
- 3 Masontown
- 4 Fairmont East
- 5 Newburg
- 6 Grafton
- 7 Thornton
- 8 Fellowsville

ROAD CLASSIFICATION	
	Expressway
	Secondary Hwy
	Ramp
	Interstate Route
	Local Connector
	Local Road
	4WD
	US Route
	State Route

