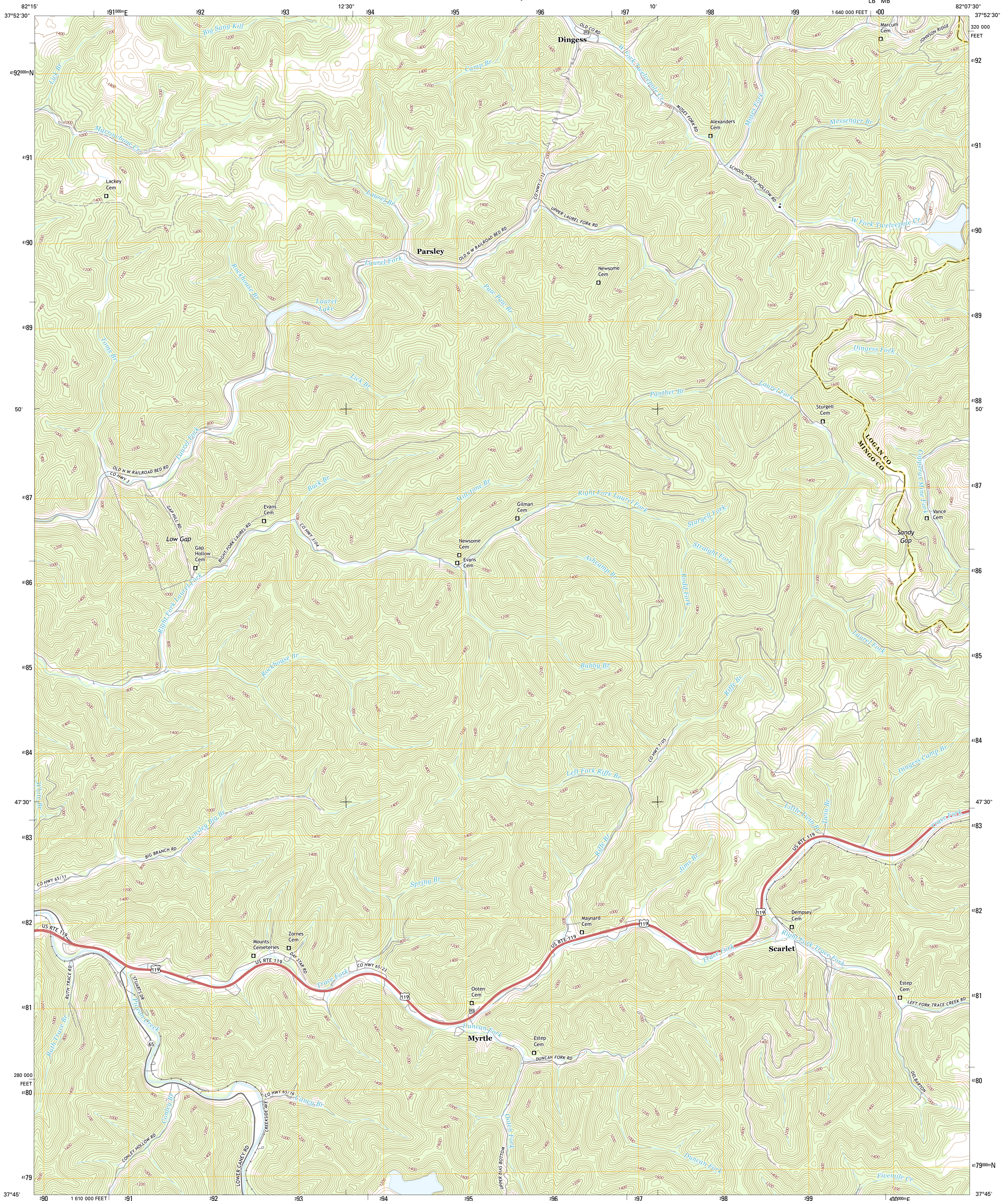




U.S. DEPARTMENT OF THE INTERIOR
U.S. GEOLOGICAL SURVEY



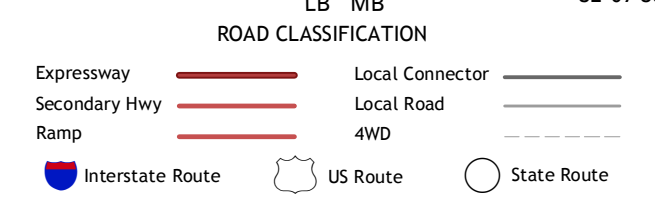
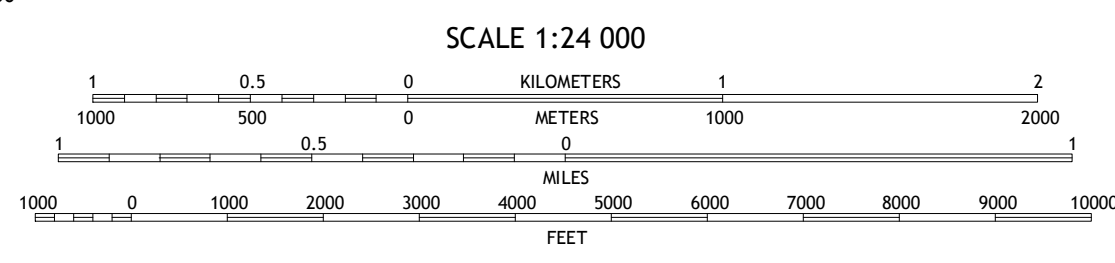
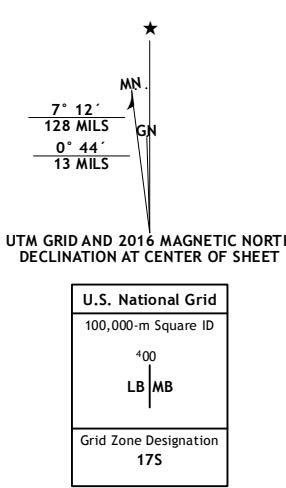
MYRTLE QUADRANGLE
WEST VIRGINIA
7.5-MINUTE SERIES



Produced by the United States Geological Survey
 North American Datum of 1983 (NAD83)
 World Geodetic System of 1984 (WGS84) Projection and
 1 000-meter grid: Universal Transverse Mercator, Zone 17S
 10 000-foot ticks: West Virginia Coordinate System of 1983
 (south zone)

This map is not a legal document. Boundaries may be
 generalized for this map scale. Private lands within government
 reservations may not be shown. Obtain permission before
 entering private lands.

Imagery.....NAIP, December 2014
 Roads.....U.S. Census Bureau, 2015 - 2016
 Names.....GNIS, 2016
 Hydrography.....National Hydrography Dataset, 2014
 Contours.....National Elevation Dataset, 2005
 Boundaries.....Multiple sources; see metadata file 1972 - 2016
 Wetlands.....FWS National Wetlands Inventory 1977 - 2014



1	2	3
4	5	6
7	8	

ADJOINING QUADRANGLES

1 Wilsendale
2 Trace
3 Champanville
4 Naugatuck
5 Holden
6 Williamson
7 Delbarton
8 Barnabus

MYRTLE, WV
2016



NSN 7540-16-402-94
GSA GEN. REG. NO. 27
US GPO: 2016-01-14
NGA REF. NO. USGSX24K31241