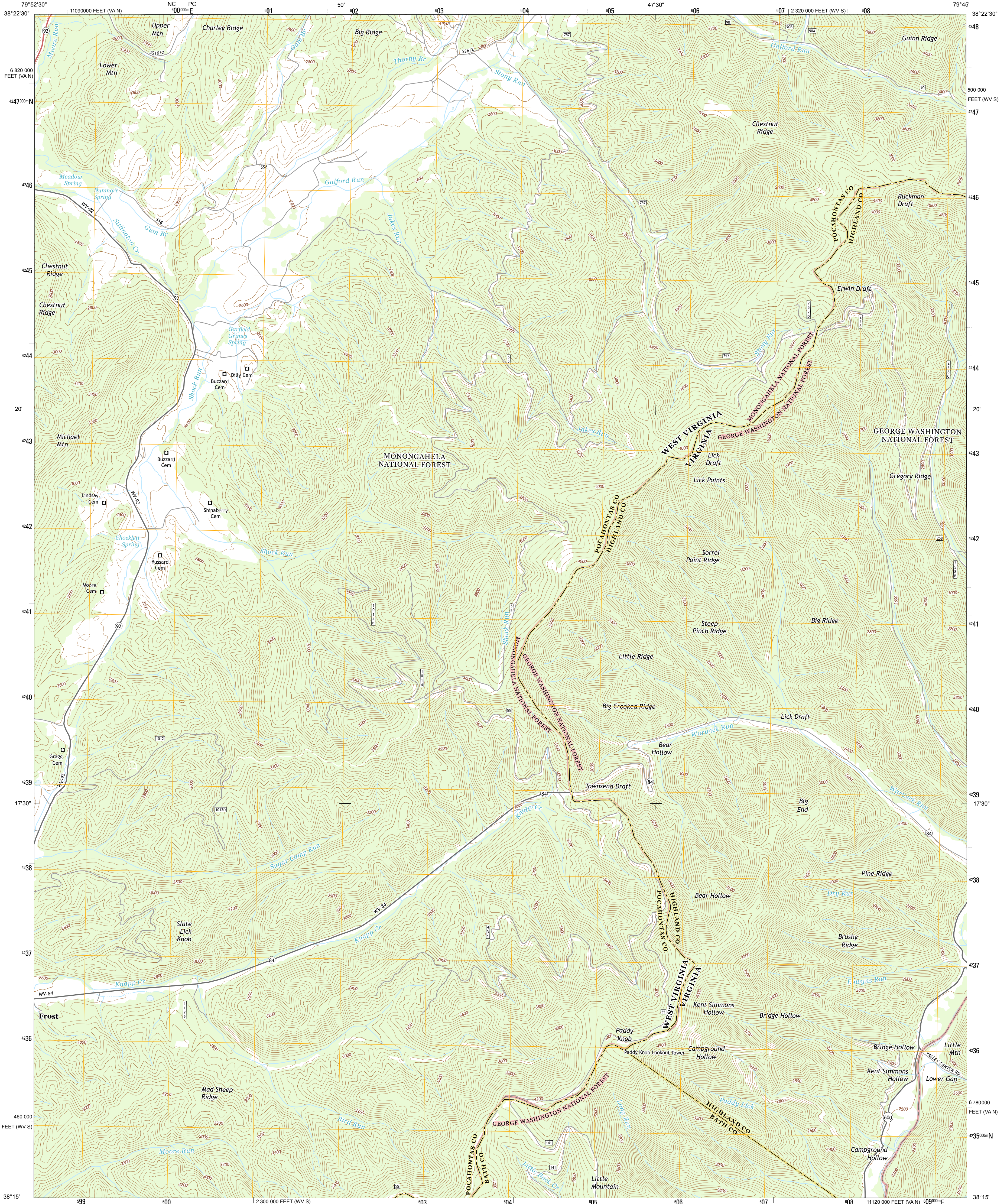




U.S. DEPARTMENT OF THE INTERIOR
U.S. GEOLOGICAL SURVEY



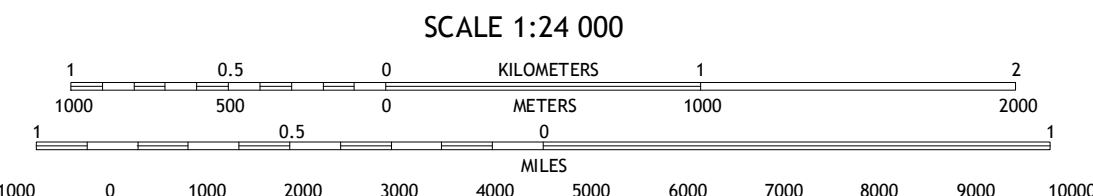
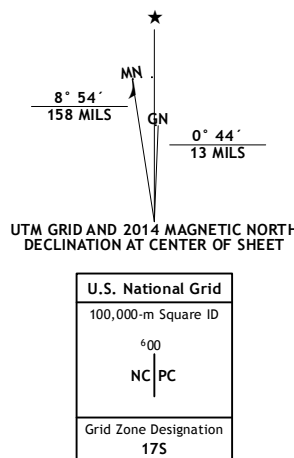
PADDY KNOB QUADRANGLE
WEST VIRGINIA-VIRGINIA
7.5-MINUTE SERIES



Produced by the United States Geological Survey
North American Datum of 1983 (NAD83)
World Geodetic System of 1984 (WGS84). Projection and 1000-foot grid: Universal Transverse Mercator, Zone 17S
10 000-foot ticks: West Virginia Coordinate System of 1983 (south zone), Virginia Coordinate System of 1983 (north zone)

This map is not a legal document. Boundaries may be generalized for this map scale. Private lands within government reservations may not be shown. Obtain permission before entering private lands.

Imagery: NAIIP, October 2011
Roads: HERE, ©2013
Roads within US Forest Service Lands: FSTopo Data with limited Forest Service updates, 2013
Names: GNSIS, 2013
Hydrography: National Hydrography Dataset, 2011
Contours: National Elevation Dataset, 2006
Boundaries: Multiple sources; see metadata file 1972-2013



CONTOUR INTERVAL 40 FEET
NORTH AMERICAN VERTICAL DATUM OF 1988

This map was produced to conform with the National Geospatial Program US Topo Product Standard, 2011. A metadata file associated with this product is draft version 0.6.16



- | ROAD CLASSIFICATION | |
|---------------------|-------------------------|
| | Local Connector |
| | Local Road |
| | 4WD |
| | US Route |
| | FS Passenger Route |
| | FS High Clearance Route |
- Check with local Forest Service unit for current travel conditions and restrictions.

ADJOINING QUADRANGLES

1	2	3
4	5	6
7	8	

- 1 Cass
- 2 Green Bank
- 3 Highstown
- 4 Clover Lick
- 5 Mustoe
- 6 Minnehaha Springs
- 7 Sunrise
- 8 Burleville

PADDY KNOB, WV-VA
2014

