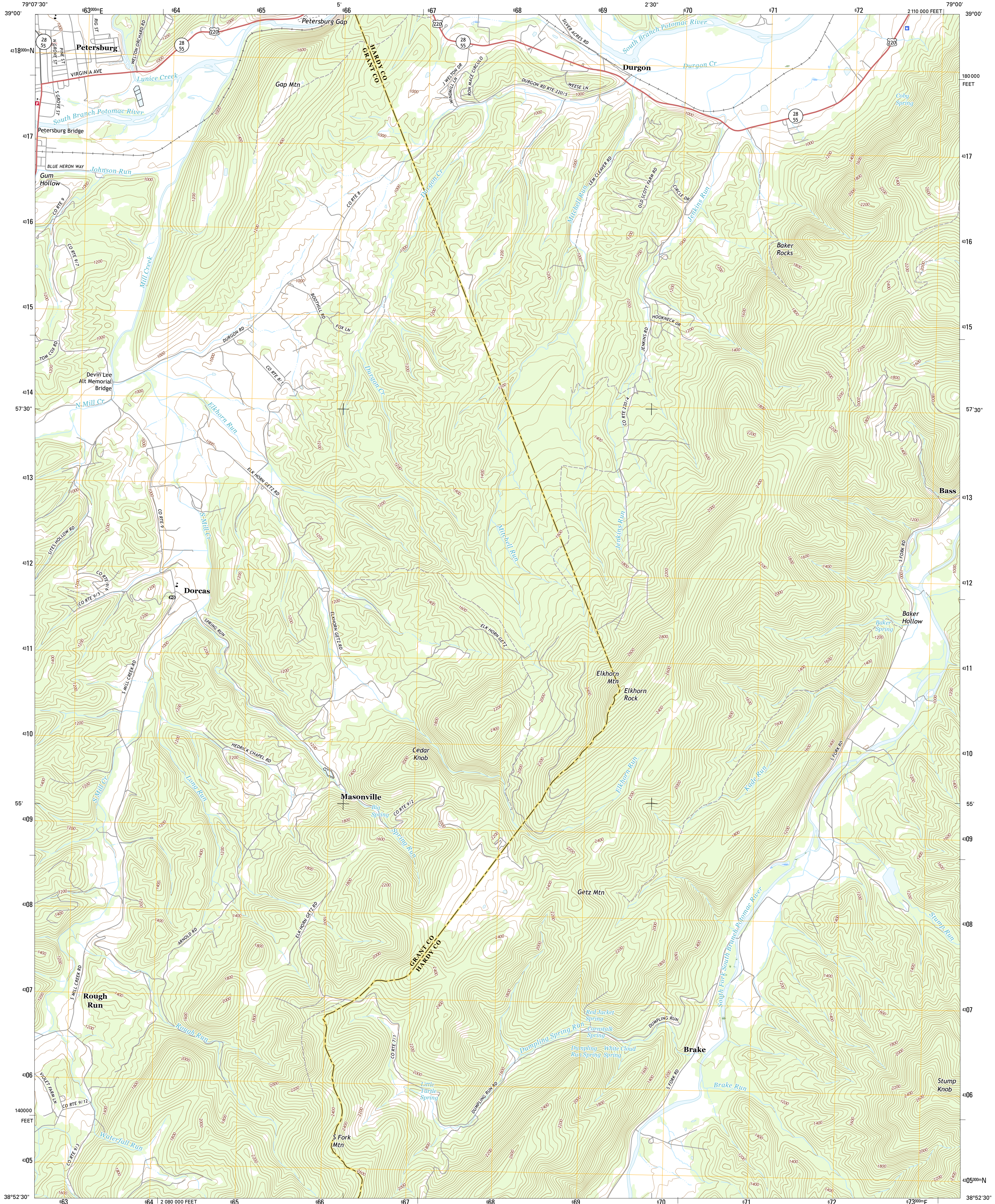




U.S. DEPARTMENT OF THE INTERIOR
U.S. GEOLOGICAL SURVEY



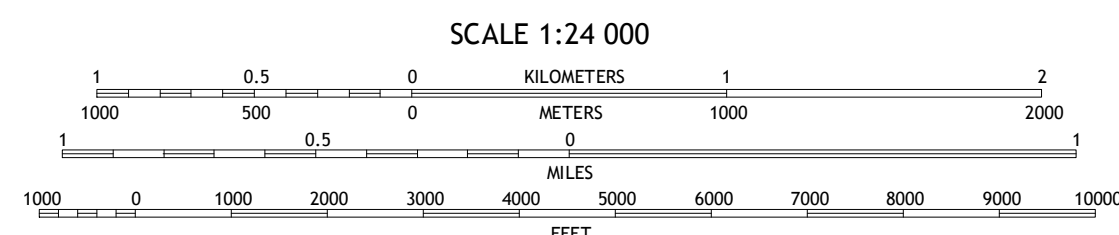
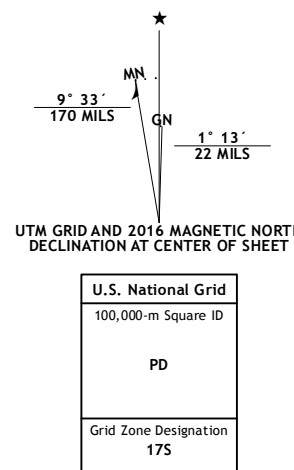
PETERSBURG EAST QUADRANGLE
WEST VIRGINIA
7.5-MINUTE SERIES



Produced by the United States Geological Survey
North American Datum of 1983 (NAD83)
World Geodetic System of 1984 (WGS84). Projection and
1 000-meter grid: Universal Transverse Mercator, Zone 17S
10 000-foot ticks: West Virginia Coordinate System of 1983
(north zone)

This map is not a legal document. Boundaries may be
generalized for this map scale. Private lands within government
reservations may not be shown. Obtain permission before
entering private lands.

Imagery:.....NAIP, December 2014
Roads:.....U.S. Census Bureau, 2015 - 2016
Names:.....GNIS, 2016
Hydrography:.....National Hydrography Dataset, 2014
Contours:.....National Elevation Dataset, 2006
Boundaries:.....Multiple sources; see metadata file 1972 - 2016
Wetlands:.....FWS National Wetlands Inventory 1977 - 2014



CONTOUR INTERVAL 40 FEET
NORTH AMERICAN VERTICAL DATUM OF 1988
This map was produced to conform with the
National Geospatial Program US Topo Product Standard, 2011.
A metadata file associated with this product is draft version 0.6.19



ROAD CLASSIFICATION

- Expressway
- Secondary Hwy
- Ramp
- Local Connector
- Local Road
- 4WD
- Interstate Route
- US Route
- State Route

1	2	3
4	5	6
7	8	

ADJOINING QUADRANGLES

PETERSBURG EAST, WV
2016

