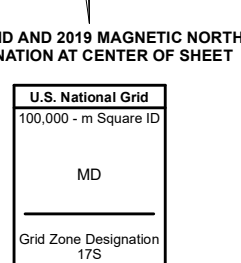
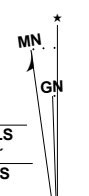


Produced by the United States Geological Survey

North American Datum of 1983 (NAD83) World Geodetic System of 1984 (WGS84) Projection and 1000-meter grid/Universal Transverse Mercator, Zone 17S This map is not a legal document. Boundaries may be generalized for this map scale. Private lands within government reservations may not be shown. Obtain permission before entering private lands.

Imagery.....NAIP, September 2016 - October 2016  
Roads.....U.S. Census Bureau, 2016  
Names.....GNIS, 1980 - 2019  
Hydrography.....National Hydrography Dataset, 1899 - 2010  
Contours.....National Elevation Dataset, 2006 - 2010  
Boundaries.....Multiple sources; see metadata file 2017 - 2018  
Wetlands.....FWS National Wetlands Inventory 1984 - 2014



CONTOUR INTERVAL 20 FEET NORTH AMERICAN VERTICAL DATUM OF 1988

This map was produced to conform with the National Geospatial Program US Topo Product Standard, 2011. A metadata file associated with this product is draft version 0.6.18



ADJOINING QUADRANGLES

1	2	3
4	5	6
7	8	

- 1 Portland
- 2 Pond Creek
- 3 Rockport
- 4 Ravenswood
- 5 Liverpool
- 6 Cottageville
- 7 Ripley
- 8 Gay

ROAD CLASSIFICATION

- Expressway
- Secondary Hwy
- Ramp
- Local Connector
- Local Road
- 4WD
- US Route
- State Route

