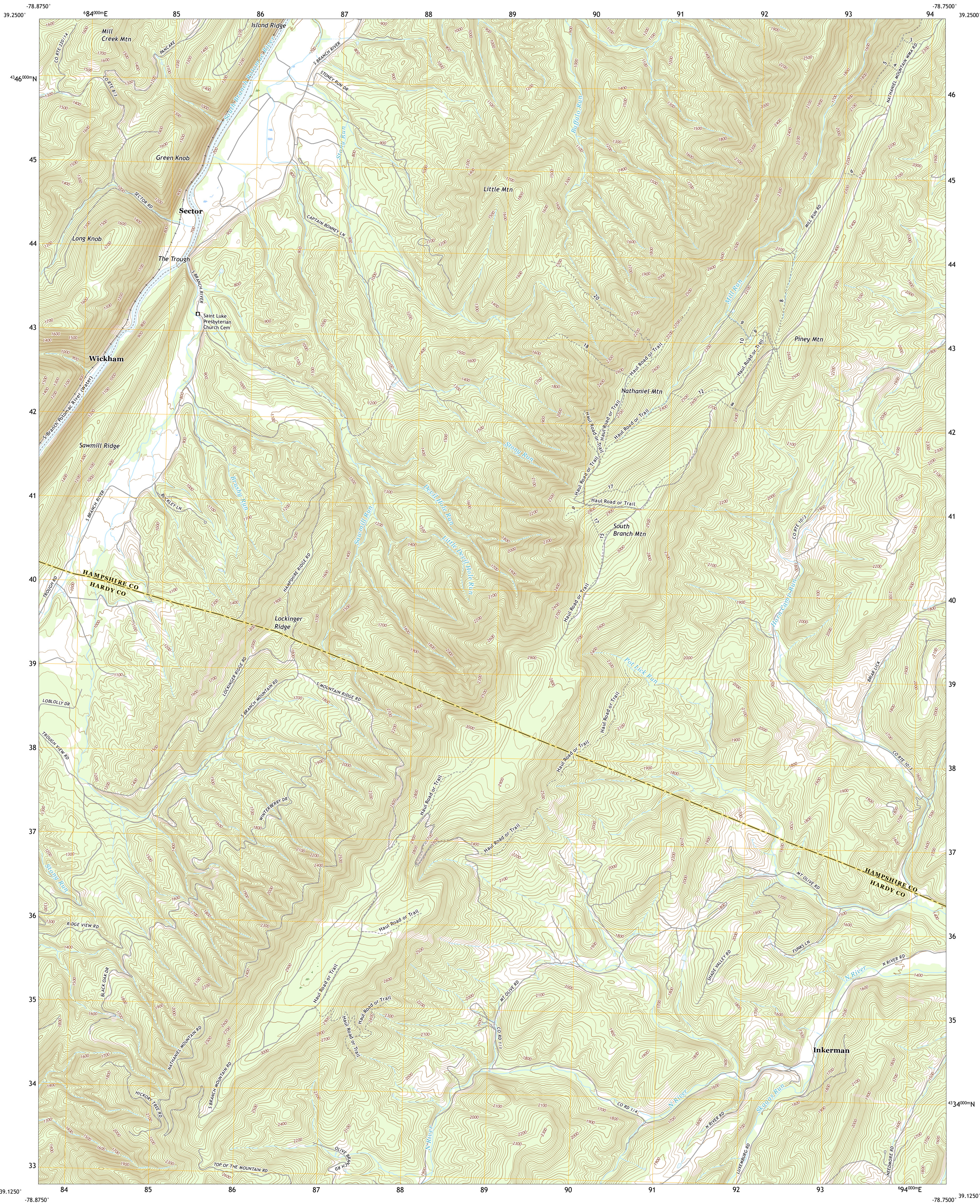




U.S. DEPARTMENT OF THE INTERIOR
U.S. GEOLOGICAL SURVEY



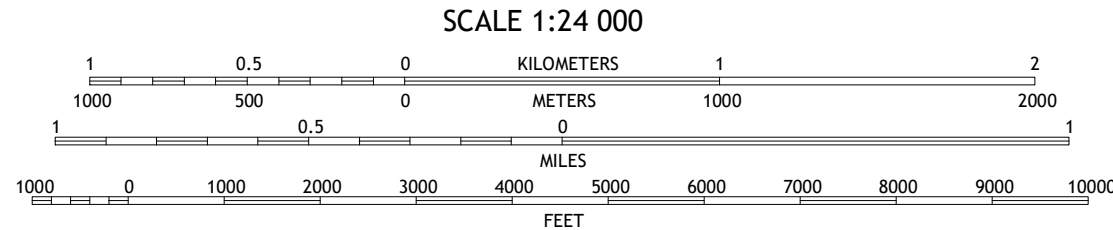
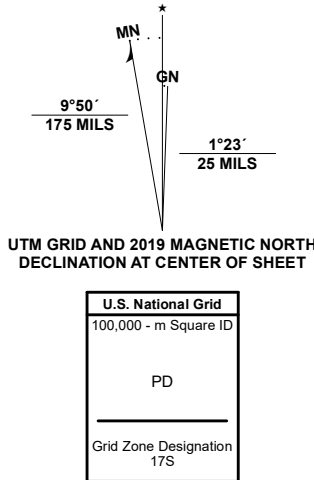
SECTOR QUADRANGLE
WEST VIRGINIA
7.5-MINUTE SERIES



Produced by the United States Geological Survey

North American Datum of 1983 (NAD83)
World Geodetic System of 1984 (WGS84). Projection and
1 000-meter grid/Universal Transverse Mercator, Zone 17S
This map is not a legal document. Boundaries may be
generalized for this map scale. Private lands within government
reservations may not be shown. Obtain permission before
entering private lands.

Imagery.....	NAIP	Not	Available
Roads.....	U.S. Census Bureau	2016	
Names.....	GNIS	1980	2016
Hydrography.....	National Hydrography Dataset	2001	2019
Contours.....	National Elevation Dataset	2018	
Boundaries.....	Multiple sources	see metadata file	2018
Wetlands.....	FWS National Wetlands Inventory	1986	



CONTOUR INTERVAL 20 FEET
NORTH AMERICAN VERTICAL DATUM OF 1988
This map was produced to conform with the
National Geospatial Program US Topo Product Standard, 2011.
A metadata file associated with this product is draft version 0.6.18



1	2	3
4	5	6
7	8	9

ADJOINING QUADRANGLES

1 Burlington
2 Romney
3 Augusta
4 Old Fields
5 Rio
6 Moorefield
7 Needmore
8 Baker

ROAD CLASSIFICATION

Expressway	Local Connector
Secondary Hwy	Local Road
Ramp	4WD
Interstate Route	US Route
	State Route

SECTOR, WV
2019



NSN 7540-01-6404-306
USGS REF NO. USGSX24K0403