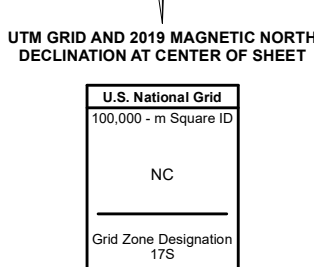
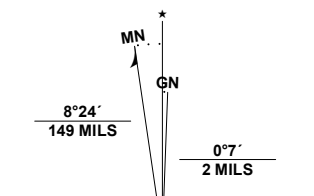


Produced by the United States Geological Survey

North American Datum of 1983 (NAD83)
World Geodetic System of 1984 (WGS84). Projection and
1 000-meter grid/Universal Transverse Mercator, Zone 17S
This map is not a legal document. Boundaries may be
generalized for this map scale. Private lands within government
reservations may not be shown. Obtain permission before
entering private lands.

Imagery.....NAIP, September 2016 - October 2016
Roads.....U.S. Census Bureau, 2016
Names.....GNIS, 1980 - 2019
Hydrography.....National Hydrography Dataset, 2002 - 2018
Contours.....National Elevation Dataset, 2006
Boundaries.....Multiple sources; see metadata file 2017 - 2018
Wetlands.....FWS National Wetlands Inventory 1986



CONTOUR INTERVAL 40 FEET
NORTH AMERICAN DATUM OF 1988

This map was produced to conform with the
National Geospatial Program US Topo Product Standard, 2011.
A metadata file associated with this product is draft version 0.6.18



ADJOINING QUADRANGLES

1	2	3
4	5	6
7	8	

- 1 Strange Creek
- 2 Herold
- 3 Little Birch
- 4 Swansdale
- 5 Tioga
- 6 Gilboa
- 7 Summersville
- 8 Craigsville

ROAD CLASSIFICATION

	Expressway		Local Connector
	Secondary Hwy		Local Road
	Ramp		4WD
	Interstate Route		US Route
			State Route

WIDEN, WV
2019

