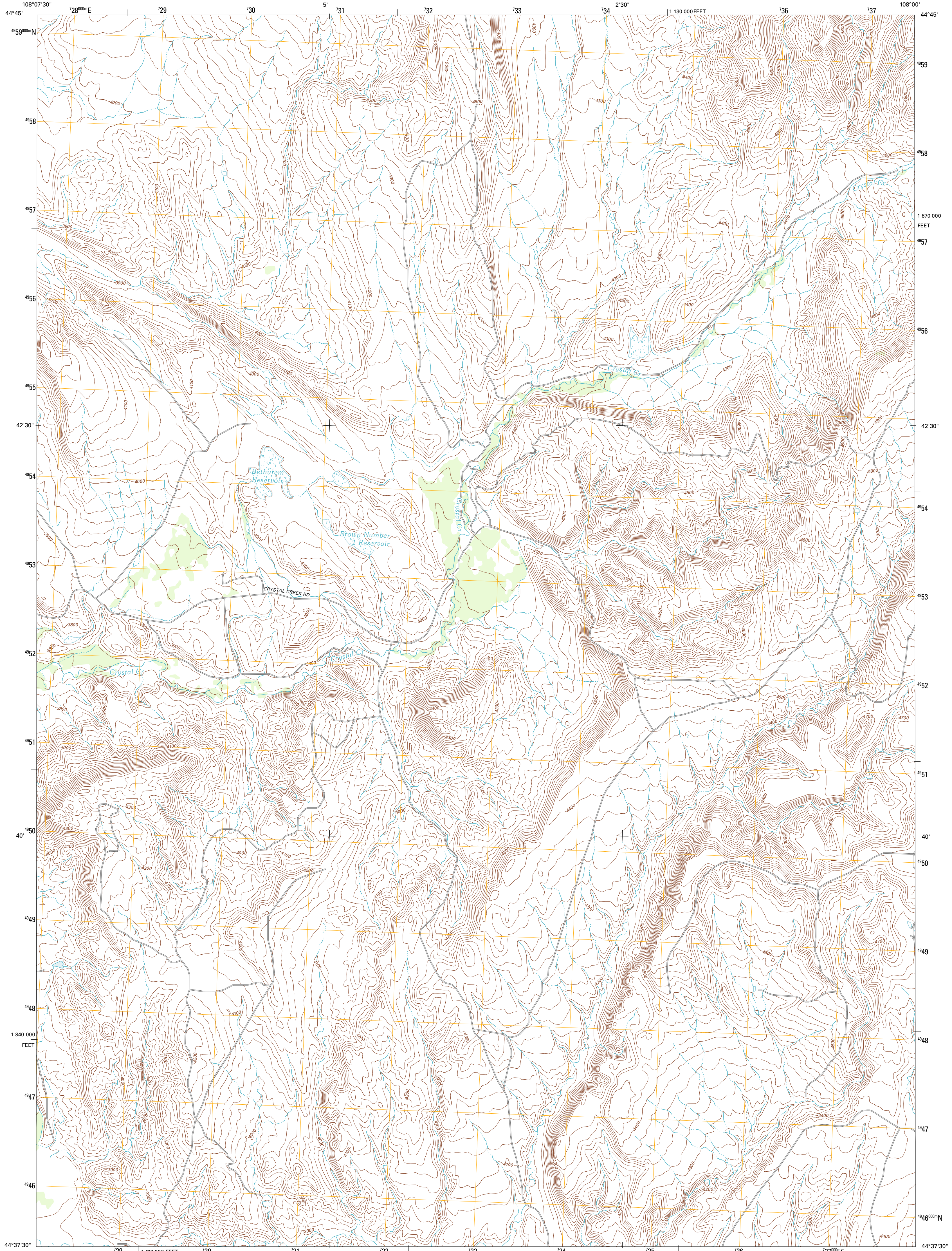




U.S. DEPARTMENT OF THE INTERIOR
U. S. GEOLOGICAL SURVEY



ALKALI CREEK QUADRANGLE
WYOMING-BIG HORN CO.
7.5-MINUTE SERIES

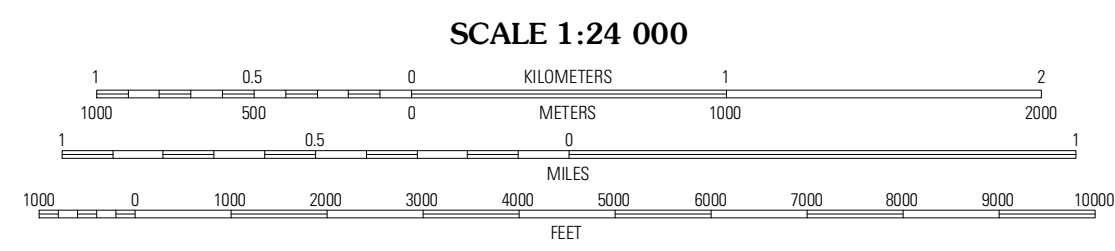


Produced by the United States Geological Survey
North American Datum of 1983 (NAD83)
World Geodetic System of 1984 (WGS84). Projection and
1 000-meter grid: Universal Transverse Mercator, Zone 12T
10 000-foot ticks: Wyoming Coordinate System of 1983 (east
central zone)

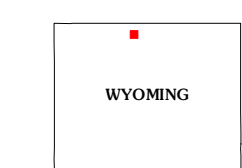
Imagery.....NAP, July 2009
Roads.....©2006-2011 TomTom
Names.....GNIS, 2011
Hydrography.....National Hydrography Dataset, 2009
Contours.....National Elevation Dataset, 2002
Boundaries.....Census, BWC, BIC, USGS, 1972-2010
Public Land Survey System.....BLM, 2006-2008

UTM GRID AND 2012 MAGNETIC NORTH
DECLINATION AT CENTER OF SHEET

| |
|-----------------------|
| U.S. National Grid |
| 100 000-m Square ID |
| Y0 |
| Grid Zone Designation |
| 12T |



SCALE 1:24 000
CONTOUR INTERVAL 20 FEET
NORTH AMERICAN VERTICAL DATUM OF 1988
This map was produced to conform with the
National Geospatial Program US Topo Product Standard, 2011.
A metadata file associated with this product is draft version 0.6.3



QUADRANGLE LOCATION

| | | |
|--------------|-------------------|------------------|
| Kane | Cottonwood Canyon | Medicine Wheel |
| Spence | Alkali Creek | Bear Creek Ranch |
| Sheep Canyon | Greybull North | Devils Richen |

ADJOINING 7.5' QUADRANGLES

ROAD CLASSIFICATION

| | |
|------------------|-------------|
| Interstate Route | State Route |
| US Route | Local Road |
| Ramp | 4WD |

ALKALI CREEK, WY
2012