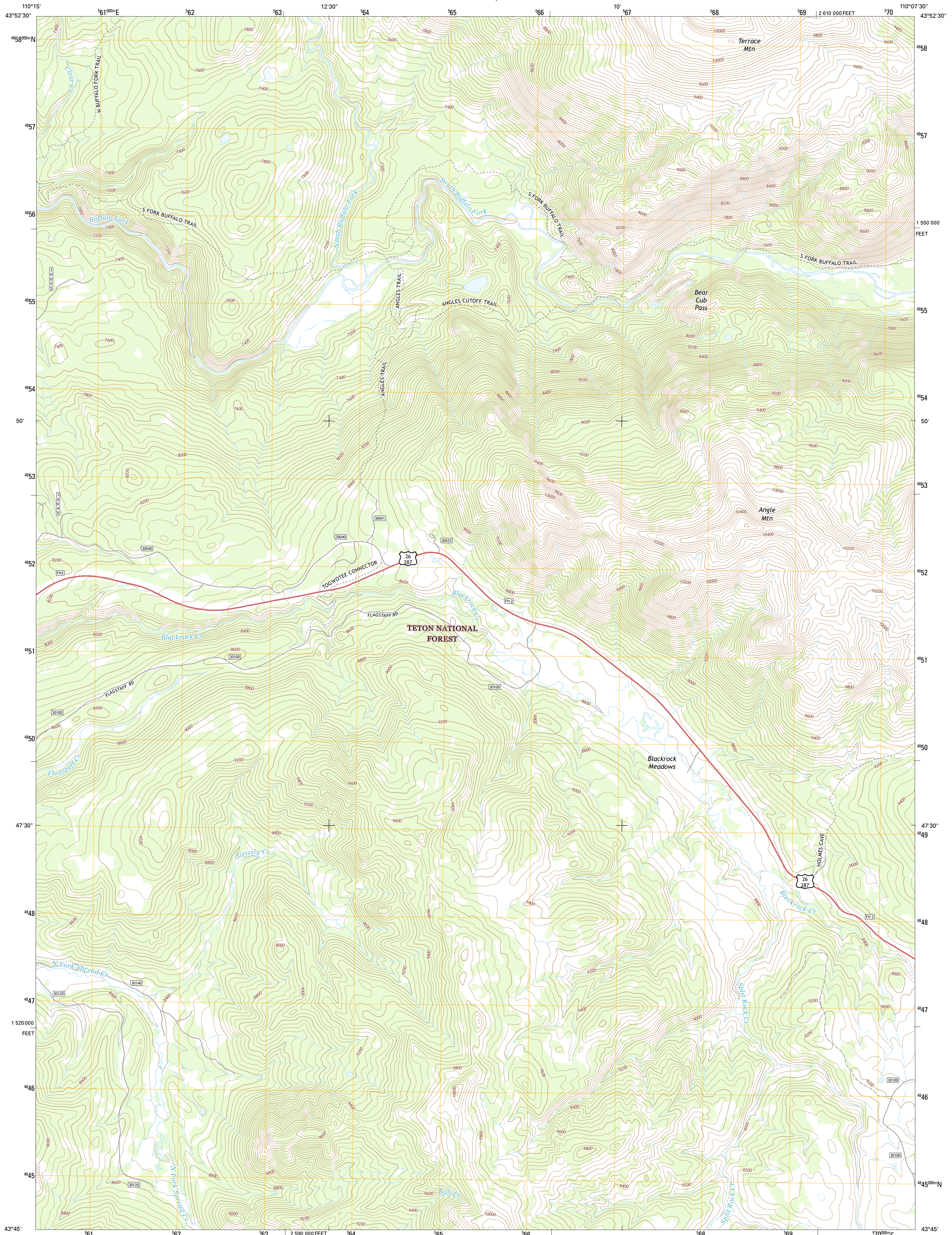




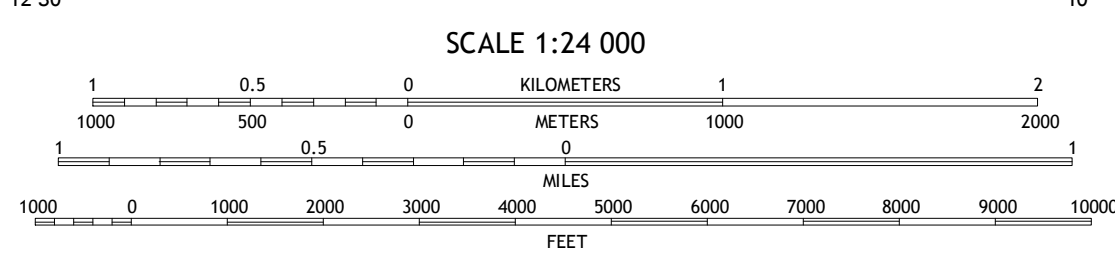
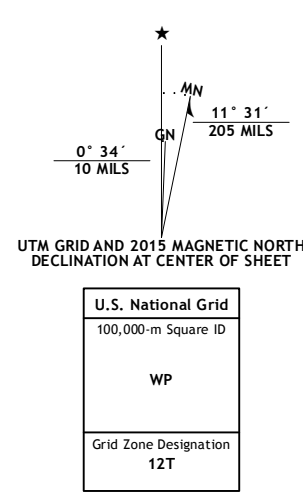
U.S. DEPARTMENT OF THE INTERIOR
U.S. GEOLOGICAL SURVEY



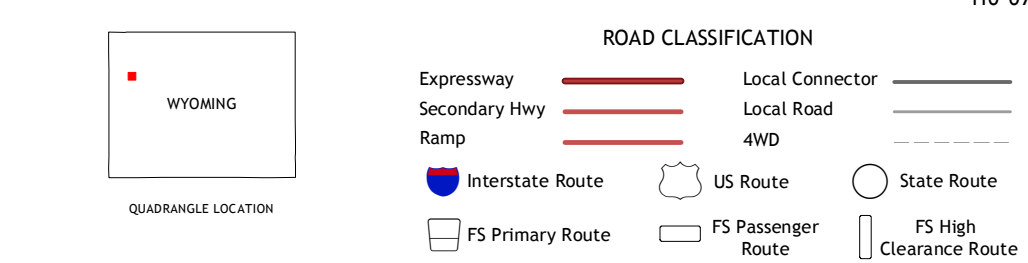
ANGLE MOUNTAIN QUADRANGLE
WYOMING-TETON CO.
7.5-MINUTE SERIES



Produced by the United States Geological Survey
North American Datum of 1983 (NAD83)
World Geodetic System of 1984 (WGS84). Projection and
1000-meter grid: Universal Transverse Mercator, Zone 12T
10 000-foot ticks: Wyoming Coordinate System of 1983 (west zone)
This map is not a legal document. Boundaries may be
generalized for this map scale. Private lands within government
reservations may not be shown. Obtain permission before
entering private lands.
Imagery:NAIP, August 2012
Roads:HERE, ©2013 - 2014
Roads within US Forest Service Lands:FS Topo Data
with limited Forest Service updates, 2012 - 2015
Names:GNIS, 2015
Hydrography:National Hydrography Dataset, 2012
Contours:National Elevation Dataset, 2000
Boundaries:Multiple sources; see metadata file 1972 - 2015
Public Land Survey System:BLM, 2011



CONTOUR INTERVAL 40 FEET
NORTH AMERICAN VERTICAL DATUM OF 1988
This map was produced to conform with the
National Geospatial Program US Topo Product Standard, 2011.
A metadata file associated with this product is draft version 0.6.18



1	2	3
4	5	6
7	8	

ADJOINING QUADRANGLES

Check with local Forest Service unit
for current travel conditions and restrictions.
ANGLE MOUNTAIN, WY
2015

