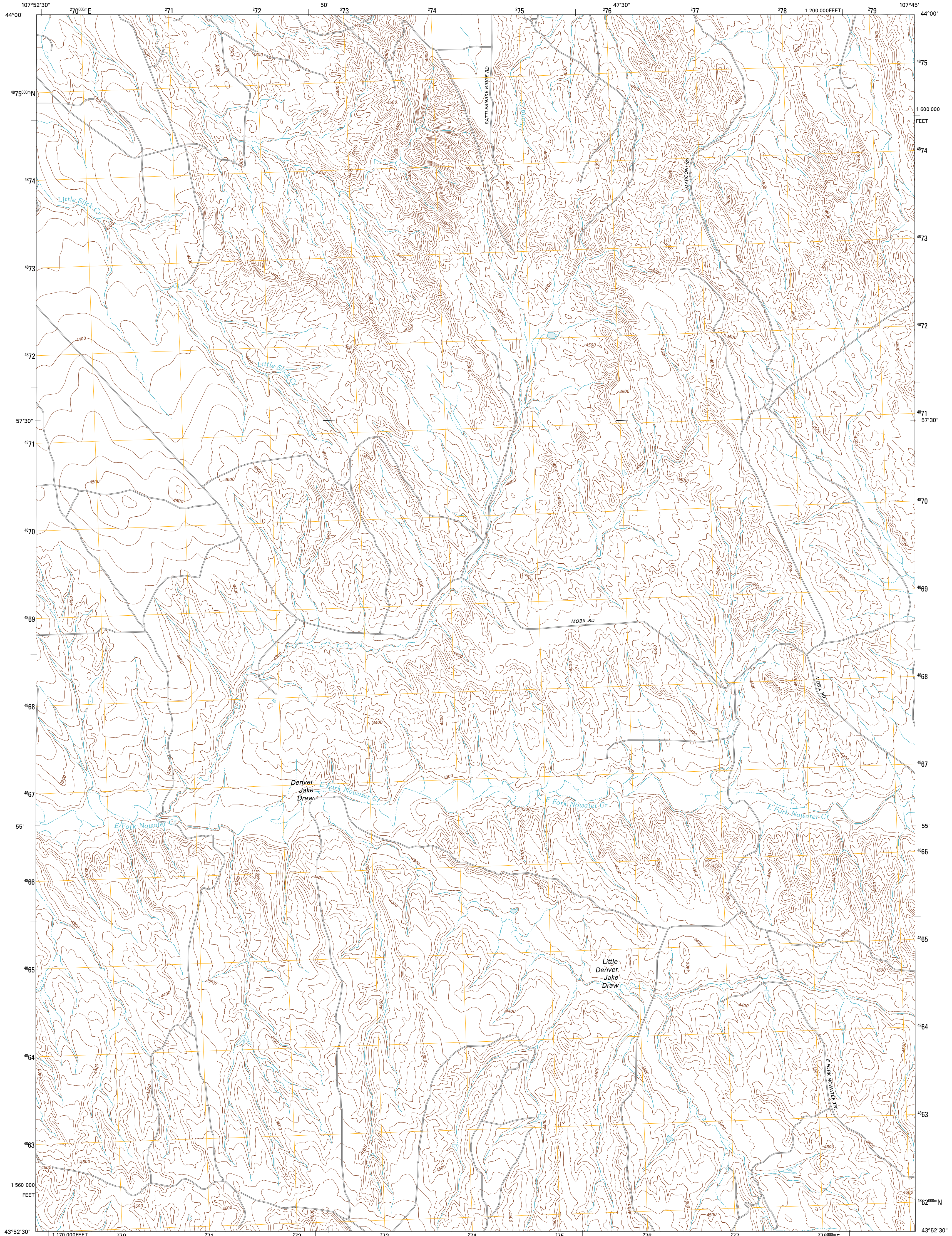




U.S. DEPARTMENT OF THE INTERIOR
U. S. GEOLOGICAL SURVEY

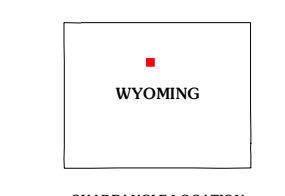
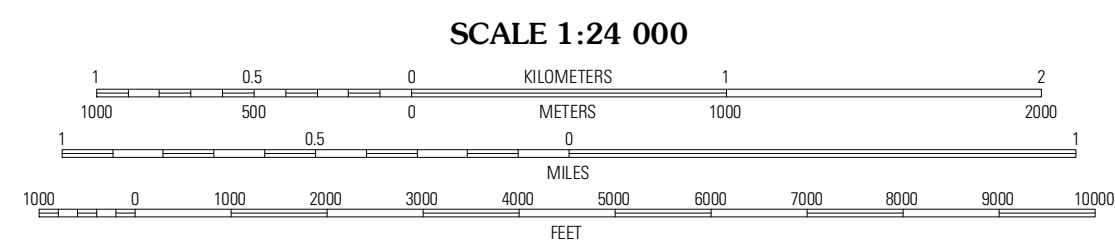
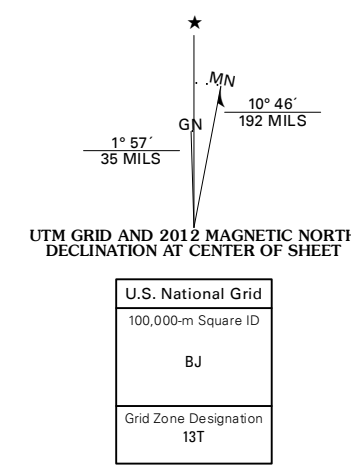


BANJO FLATS EAST QUADRANGLE
WYOMING-WASHAKIE CO.
7.5-MINUTE SERIES



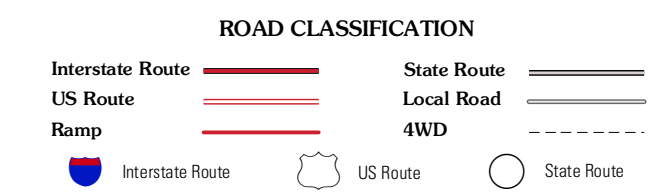
Produced by the United States Geological Survey
North American Datum of 1983 (NAD83)
World Geodetic System of 1984 (WGS84). Projection and
1 000-meter grid: Universal Transverse Mercator, Zone 13T
10 000-foot ticks: Wyoming Coordinate System of 1983 (east
central zone)

Imagery.....NAIP, August 2009
Roads.....©2006-2011 TomTom
Names.....GNIS, 2011
Hydrography.....National Hydrography Dataset, 2009
Contours.....National Elevation Dataset, 2011
Boundaries.....Census, IBWC, IBC, USGS, 1972 - 2010
Public Land Survey System.....BLM, 2006 - 2008



| | | |
|------------------|------------------|-------------|
| Workland | Workland SE | Broom Draw |
| Banjo Flats West | Banjo Flats East | Cabin Fork |
| Zimmerman Buttes | Henry Draw | Wagon Prong |

ADJOINING 7.5' QUADRANGLES



BANJO FLATS EAST, WY
2012