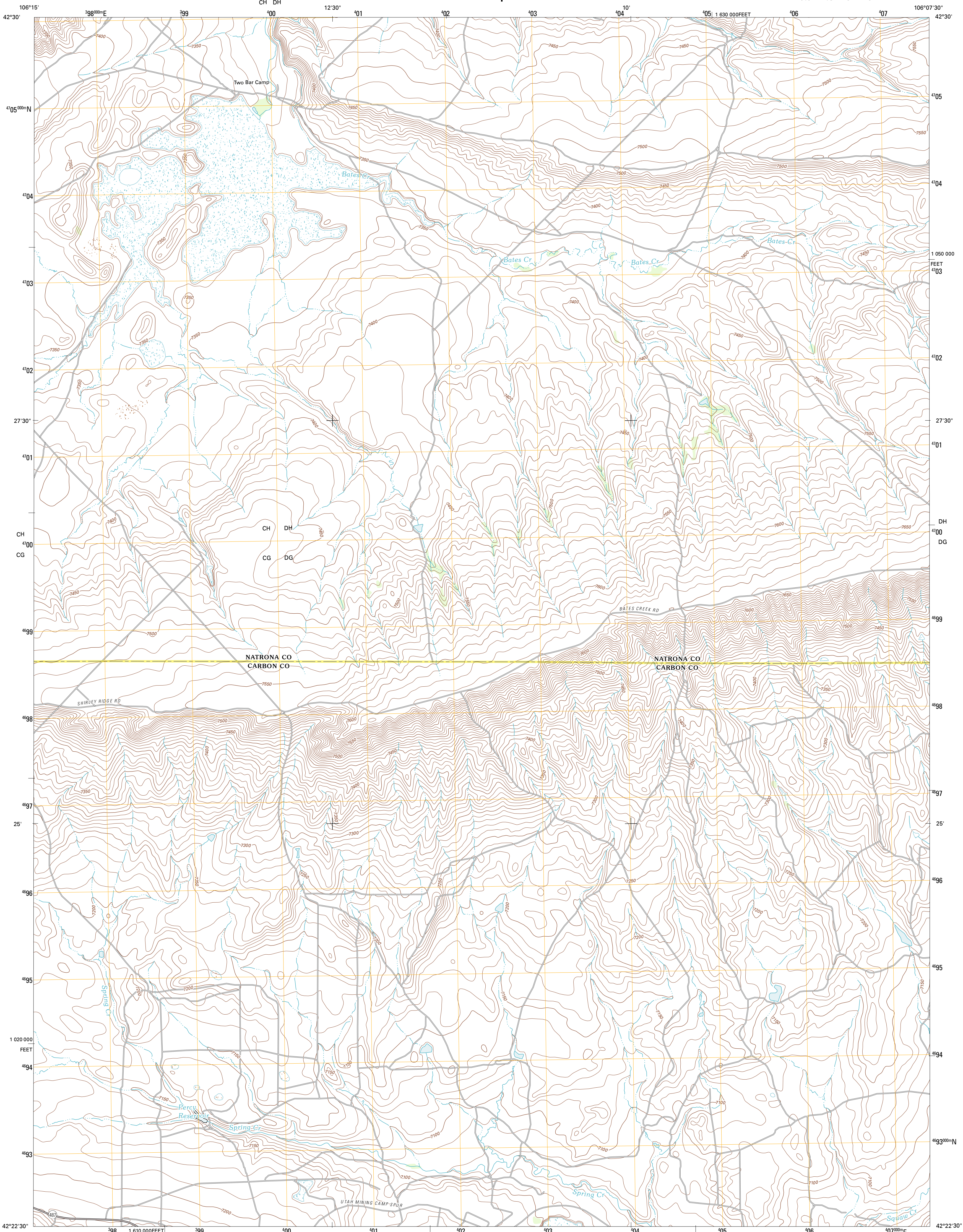




U.S. DEPARTMENT OF THE INTERIOR  
U. S. GEOLOGICAL SURVEY

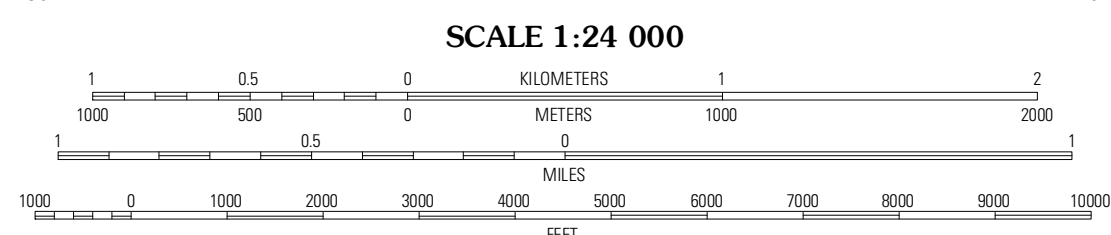
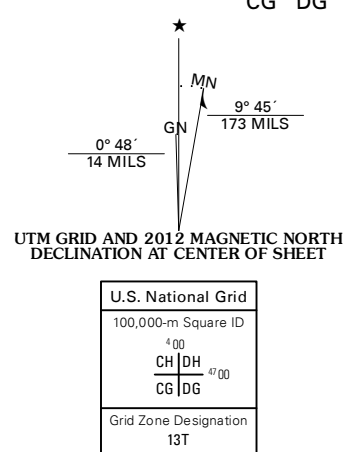


BATES CREEK RESERVOIR QUADRANGLE  
WYOMING  
7.5-MINUTE SERIES



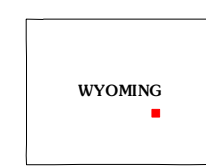
Produced by the United States Geological Survey  
North American Datum of 1983 (NAD83)  
World Geodetic System of 1984 (WGS84). Projection and  
1 000-meter grid: Universal Transverse Mercator, Zone 13T  
10 000-foot ticks: Wyoming Coordinate System of 1983 (east  
central zone)

Imagery.....N.A.P., August 2009  
Roads.....©2006-2011 TomTom  
Names.....GNSS, 2011  
Hydrography.....National Hydrography Dataset, 2009  
Contours.....National Elevation Dataset, 2009  
Boundaries.....Census, BWC, IBC, USGS, 1972 - 2010  
Public Land Survey System.....BLM, 2006 - 2008



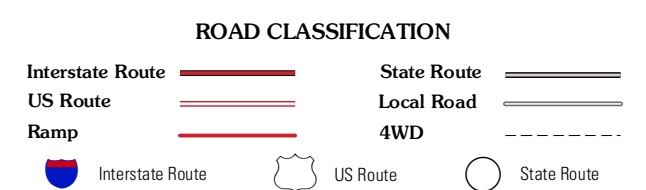
CONTOUR INTERVAL 10 FEET  
NORTH AMERICAN VERTICAL DATUM OF 1988

This map was produced to conform with the  
National Geospatial Program US Topo Product Standard, 2011.  
A metadata file associated with this product is draft version 0.6.3



QUADRANGLE LOCATION

Sheep Creek	Ice Cave Mountain	Reno Hill
Mud Springs	Bates Creek Reservoir	Snow Spring
Measel Spring Reservoir	Moss Agate Reservoir	Chalk Hills



BATES CREEK RESERVOIR, WY  
2012

ADJOINING 7.5 QUADRANGLES