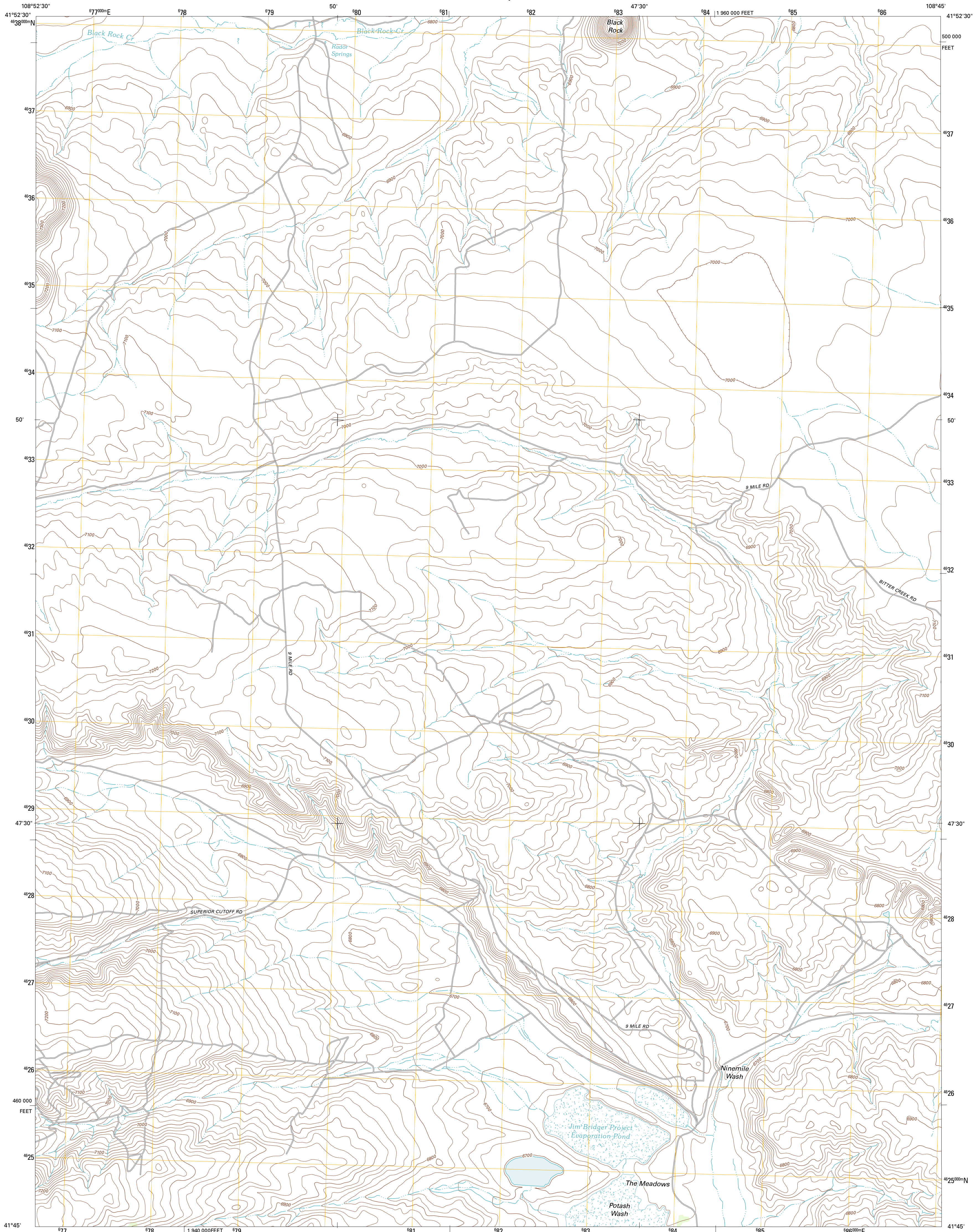




U.S. DEPARTMENT OF THE INTERIOR
U. S. GEOLOGICAL SURVEY

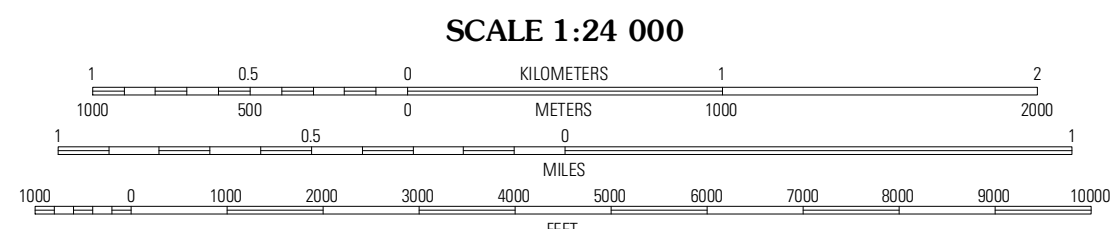
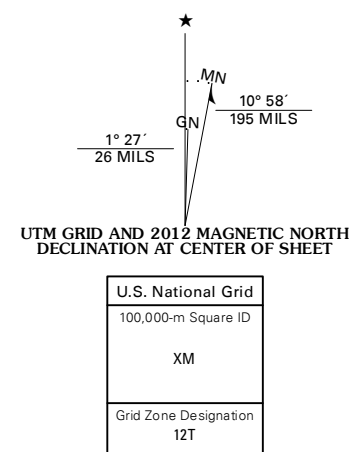


BLACK ROCK SOUTH QUADRANGLE
WYOMING-SWEETWATER CO.
7.5-MINUTE SERIES

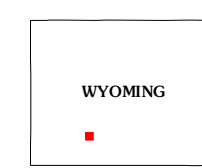


Produced by the United States Geological Survey
North American Datum of 1983 (NAD83)
World Geodetic System of 1984 (WGS84). Projection and
1 000-meter grid: Universal Transverse Mercator, Zone 12T
10 000-foot ticks: Wyoming Coordinate System of 1983
(west central zone)

Imagery:.....NAIP, August 2009
Roads:.....©2006-2011 TomTom
Names:.....GNS, 2011
Hydrography:.....National Hydrography Dataset, 2009
Contours:.....National Elevation Dataset, 2007
Boundaries:.....Census, BGC, USGS, 1972 - 2010
Public Land Survey System:.....BLM, 2006 - 2008



SCALE 1:24 000
CONTOUR INTERVAL 20 FEET
NORTH AMERICAN VERTICAL DATUM OF 1988
This map was produced to conform with the
National Geospatial Program US Topo Product Standard, 2011.
A metadata file associated with this product is draft version 0.6.3



QUADRANGLE LOCATION

Steamboat Mountains	Black Rock North	Black Rock Flat West
South Superior	Black Rock South	Tennille Rim
Thayer Junction	Point of Rocks	Bitter Creek NW

ROAD CLASSIFICATION

Interstate Route	State Route
US Route	Local Road
Ramp	4WD

BLACK ROCK SOUTH, WY
2012