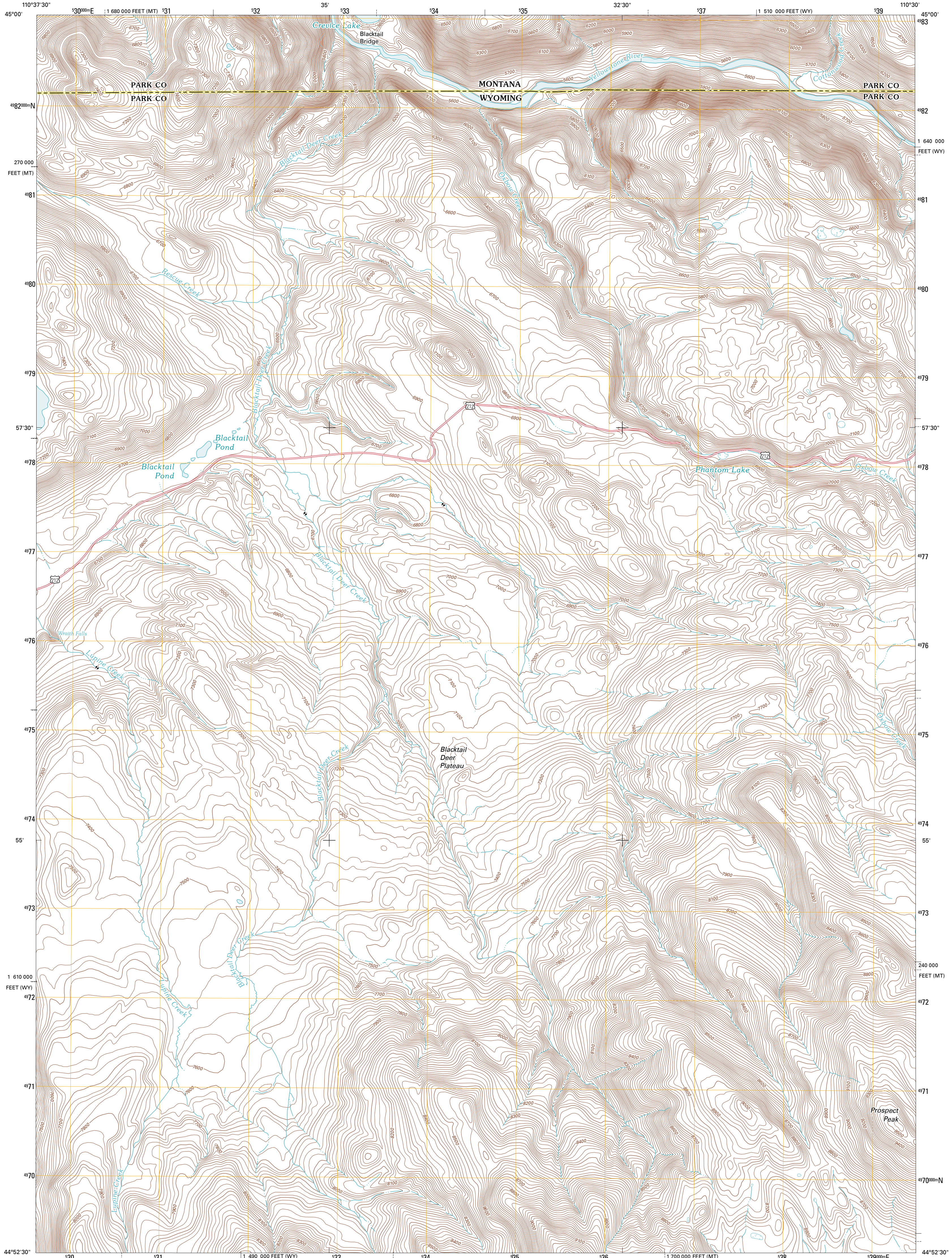




U.S. DEPARTMENT OF THE INTERIOR
U. S. GEOLOGICAL SURVEY

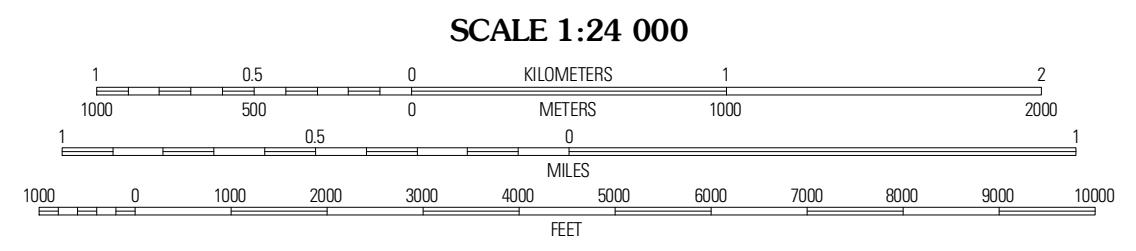
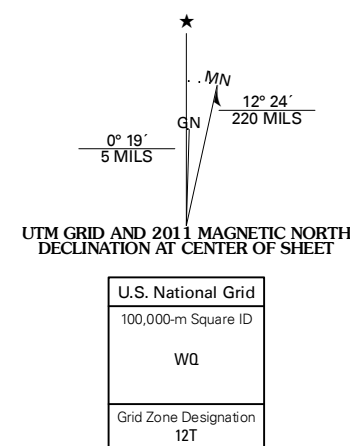


BLACKTAIL DEER CREEK QUADRANGLE
WYOMING-MONTANA
7.5-MINUTE SERIES



Produced by the United States Geological Survey
North American Datum of 1983 (NAD83)
World Geodetic System of 1984 (WGS84). Projection and
1 000-meter grid: Universal Transverse Mercator, Zone 12T
10 000-foot ticks: Wyoming Coordinate System of 1983
(west central zone), Montana Coordinate System of 1983

Imagery.....NAP, August 2009
Roads.....©2006-2010 Tele Atlas
Names.....GNSS, 2010
Hydrography.....National Hydrography Dataset, 2009
Contours.....National Elevation Dataset, 1999
Boundaries.....Census, IBWC, IBC, USGS, 1972 - 2010



CONTOUR INTERVAL 20 FEET
NORTH AMERICAN VERTICAL DATUM OF 1988
This map was produced to conform with version 0.5.10
of the USGS US Topo Product Standard.
A metadata file associated with this product is draft version 0.5.16

WYOMING

QUADRANGLE LOCATION

Gardiner	Ash Mountain	Specimen Creek
Mammoth	Blacktail Deer Creek	Tower Junction
Obsidian Cliff	Cook Peak	Mount Washburn

ADJOINING 7.5 QUADRANGLES

ROAD CLASSIFICATION

Interstate Route	Local Road
US Route	4WD
Ramp	State Route

Interstate Route US Route State Route

BLACKTAIL DEER CREEK, WY-MT
2011