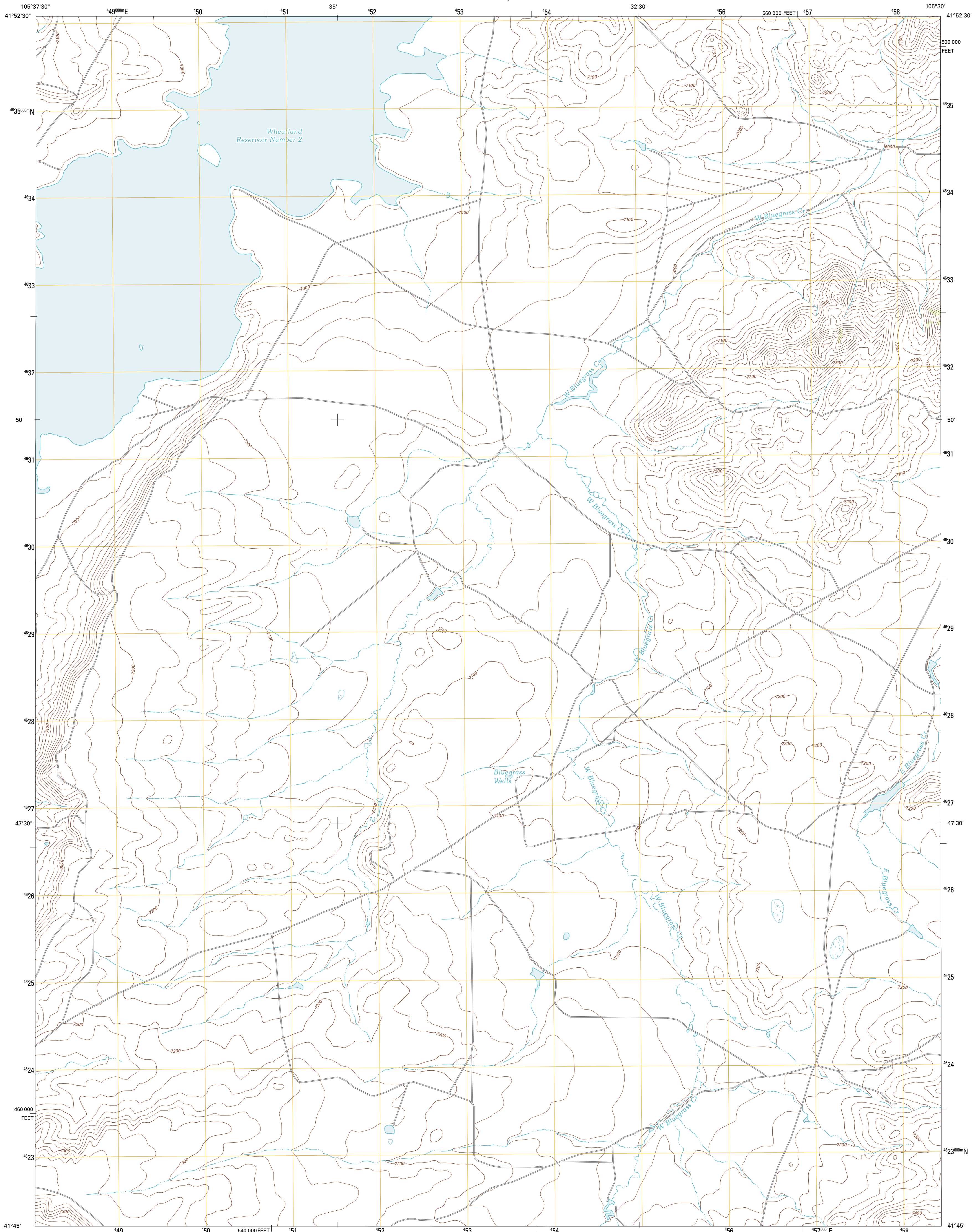




U.S. DEPARTMENT OF THE INTERIOR  
U. S. GEOLOGICAL SURVEY

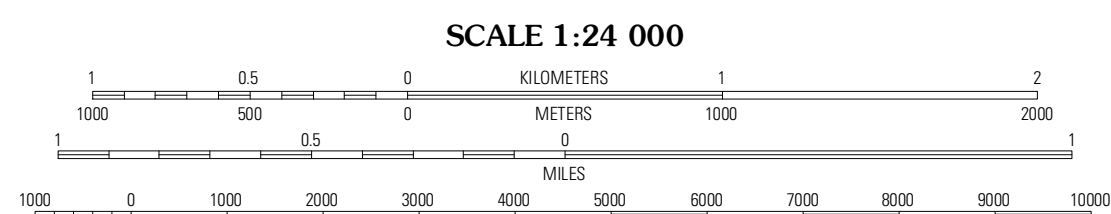
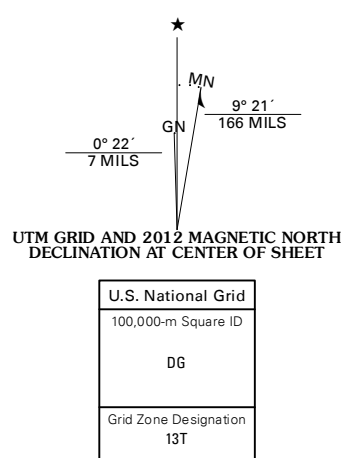


BLUEGRASS WELLS QUADRANGLE  
WYOMING-ALBANY CO.  
7.5-MINUTE SERIES

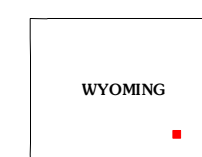


Produced by the United States Geological Survey  
North American Datum of 1983 (NAD83)  
World Geodetic System of 1984 (WGS84). Projection and  
1 000-meter grid: Universal Transverse Mercator, Zone 13T  
10 000-foot ticks: Wyoming Coordinate System of 1983 (east  
zone)

Imagery: NAIP, August 2009  
Roads: ©2006-2011 TomTom  
Names: GNS, 2011  
Hydrography: National Hydrography Dataset, 2009  
Contours: National Elevation Dataset, 2007  
Boundaries: Census, IBWC, IBC, USGS, 1972 - 2010  
Public Land Survey System: BLM, 2006 - 2008

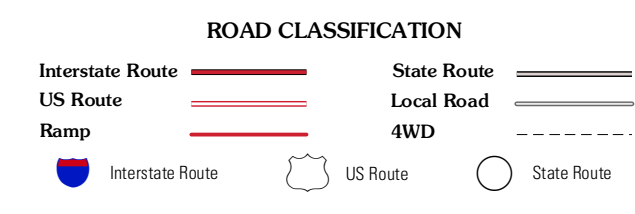


CONTOUR INTERVAL 20 FEET  
NORTH AMERICAN VERTICAL DATUM OF 1988  
This map was produced to conform with the  
National Geospatial Program US Topo Product Standard, 2011.  
A metadata file associated with this product is draft version 0.6.3



QUADRANGLE LOCATION

|              |                 |                |
|--------------|-----------------|----------------|
| Agnes Spring | Dodge Ranch     | Bull Camp Peak |
| McGill Lakes | Bluegrass Wells | Guide Rock     |
| Lake Ione    | Sybilie Springs | Sheep Rock     |



BLUEGRASS WELLS, WY  
2012

ADJOINING 7.5' QUADRANGLES