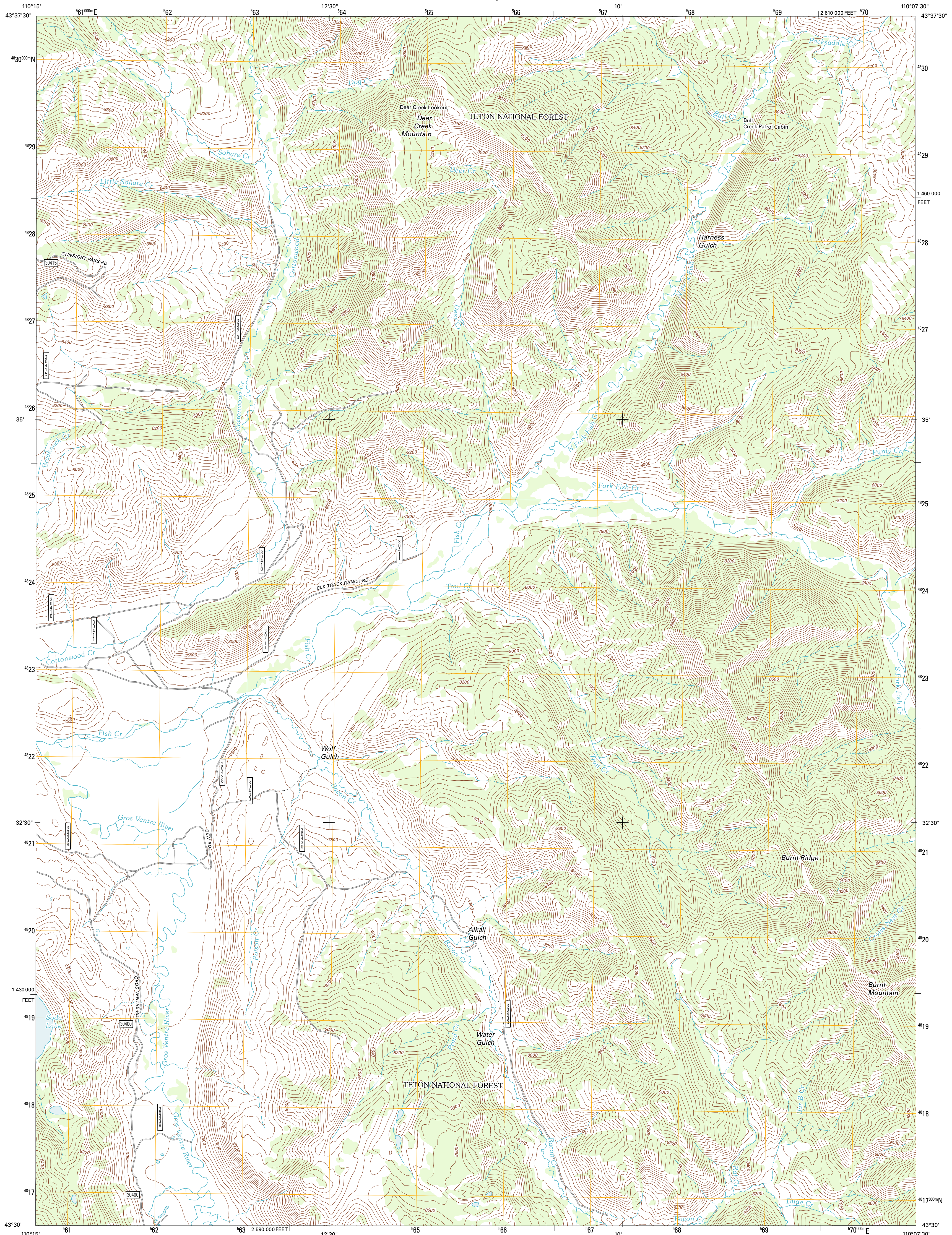




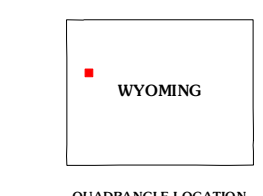
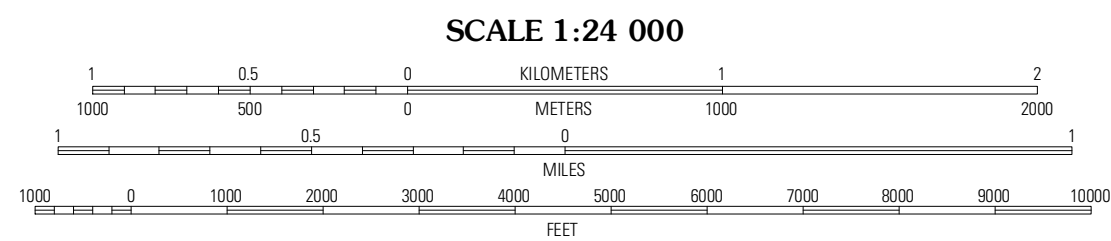
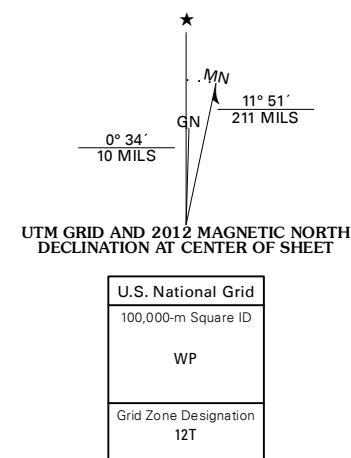
U.S. DEPARTMENT OF THE INTERIOR  
U. S. GEOLOGICAL SURVEY



BURNT MOUNTAIN QUADRANGLE  
WYOMING-TETON CO.  
7.5-MINUTE SERIES



Produced by the United States Geological Survey  
North American Datum of 1983 (NAD83)  
World Geodetic System of 1984 (WGS84). Projection and  
1 000-meter grid: Universal Transverse Mercator, Zone 12T  
10 000-foot ticks: Wyoming Coordinate System of 1983  
(west zone)



QUADRANGLE LOCATION

Green Mountain	Tripod Peak	Lana Mountain
Upper Slide Lake	Burnt Mountain	Sheridan Pass
Darwin Peak	Ouzel Falls	Mooseito Lake

ROAD CLASSIFICATION

Interstate Route	State Route	Local Road
US Route	4WD	
Ramp		
Interstate Route	US Route	State Route
FS Primary Route	FS Passenger Route	FS High Clearance Route

Check with local Forest Service unit for current travel conditions and restrictions.

BURNT MOUNTAIN, WY  
2012

Imagery: NAIP, July 2009  
Roads: National Highway Dataset, 2009  
Roads within US Forest Service Lands: FSTopo Data with limited Forest Service updates, 2009  
Names: GNIS, 2011  
Hydrography: National Hydrography Dataset, 2009  
Contours: National Elevation Dataset, 2000  
Boundaries: Census, IBWC, IBC, USGS, 1972 - 2010  
Public Land Survey System: BLM, 2006 - 2008

CONTOUR INTERVAL 40 FEET  
NORTH AMERICAN VERTICAL DATUM OF 1988

This map was produced to conform with the National Geospatial Program US Topo Product Standard, 2011. A metadata file associated with this product is draft version 0.6.3

ADJOINING 7.5 QUADRANGLES