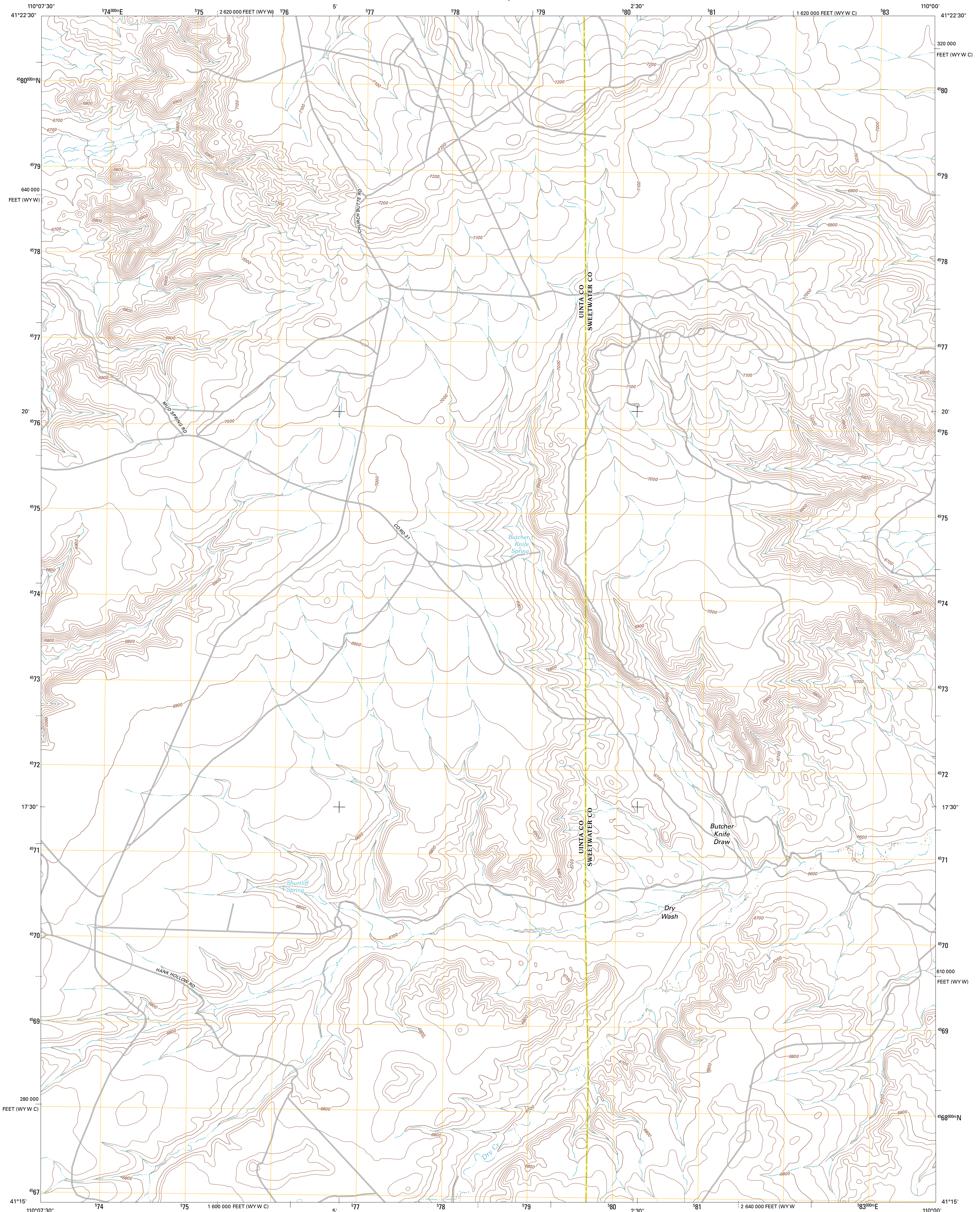




U.S. DEPARTMENT OF THE INTERIOR  
U. S. GEOLOGICAL SURVEY

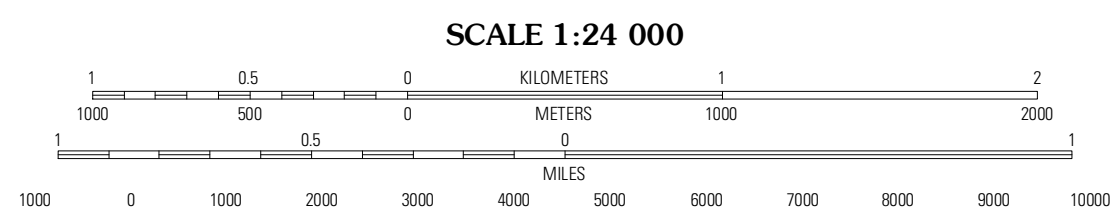
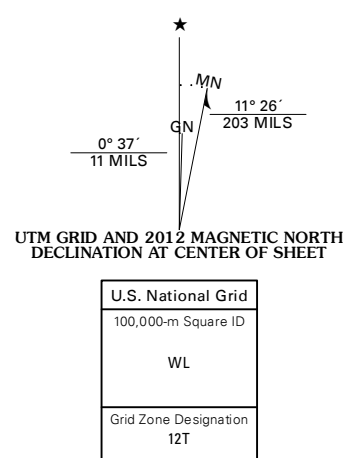


BUTCHER KNIFE DRAW QUADRANGLE  
WYOMING  
7.5-MINUTE SERIES

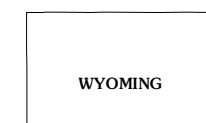


Produced by the United States Geological Survey  
North American Datum of 1983 (NAD83)  
World Geodetic System of 1984 (WGS84). Projection and  
1 000-meter grid: Universal Transverse Mercator, Zone 12T  
10 000-foot ticks: Wyoming Coordinate System of 1983  
(west and west central zones)

Imagery.....N.A.I.P., July 2009  
Roads.....©2006-2011 TomTom  
Names.....GNIS, 2011  
Hydrography.....National Hydrography Dataset, 2009  
Contours.....National Elevation Dataset, 2000  
Boundaries.....Census, BWC, IBC, USGS, 1972 - 2010  
Public Land Survey System.....BLM, 2006 - 2008

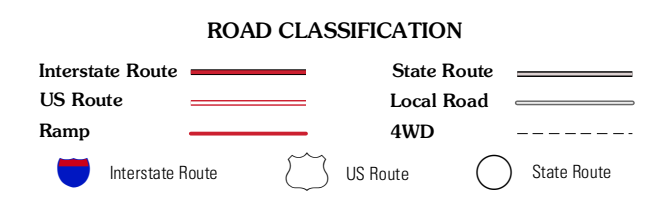


CONTOUR INTERVAL 20 FEET  
NORTH AMERICAN VERTICAL DATUM OF 1988  
This map was produced to conform with the  
National Geospatial Program US Topo Product Standard, 2011.  
A metadata file associated with this product is draft version 0.6.3



QUADRANGLE LOCATION

|                |                      |                  |
|----------------|----------------------|------------------|
| Milleville     | Wildcat Butte        | Antelope Knoll   |
| Turtle Hill    | Butcher Knife Draw   | Needle Reservoir |
| Reed Reservoir | Soap Holes Reservoir | Horse Ranch      |



BUTCHER KNIFE DRAW, WY  
2012

ADJOINING 7.5' QUADRANGLES