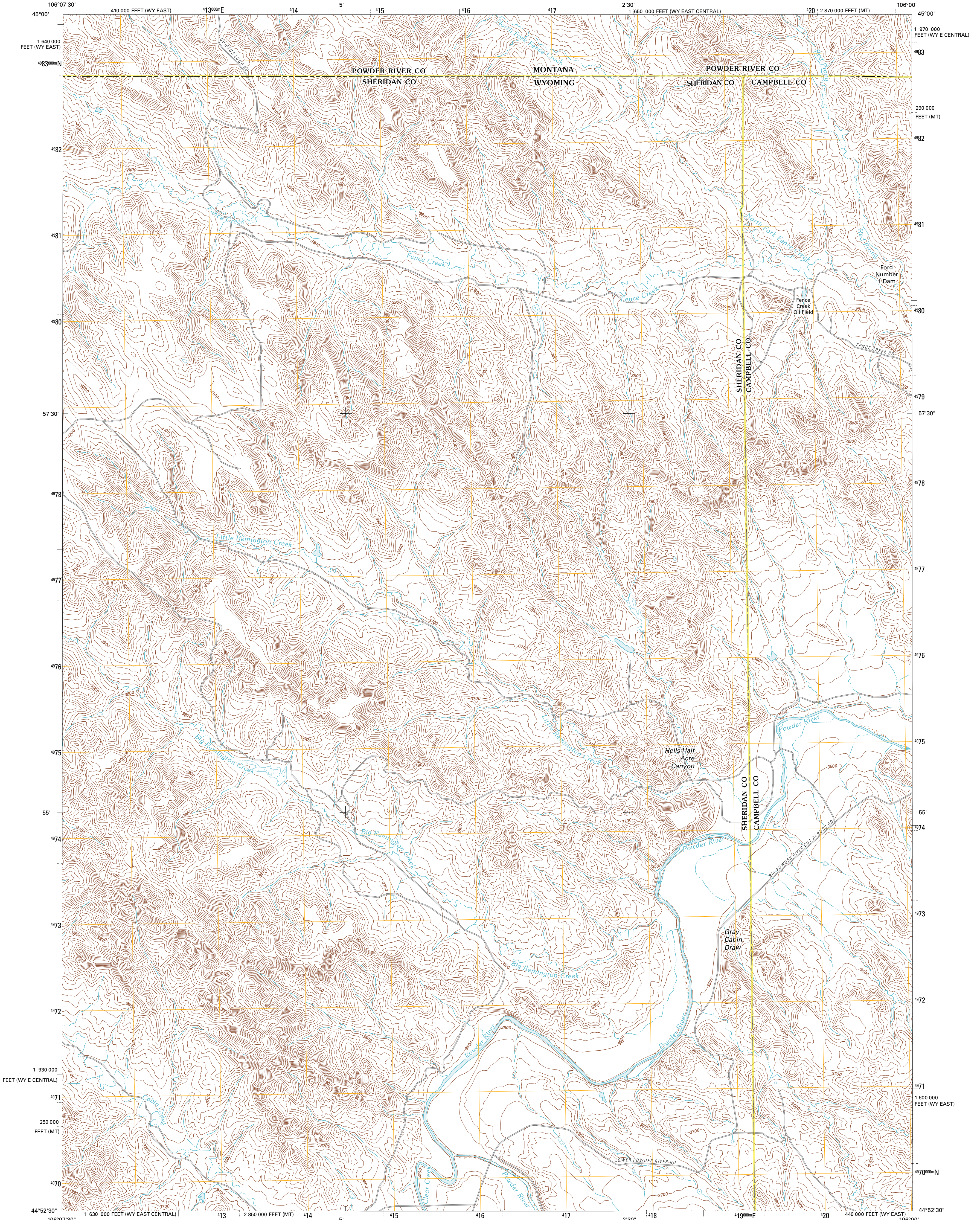




U.S. DEPARTMENT OF THE INTERIOR
U. S. GEOLOGICAL SURVEY

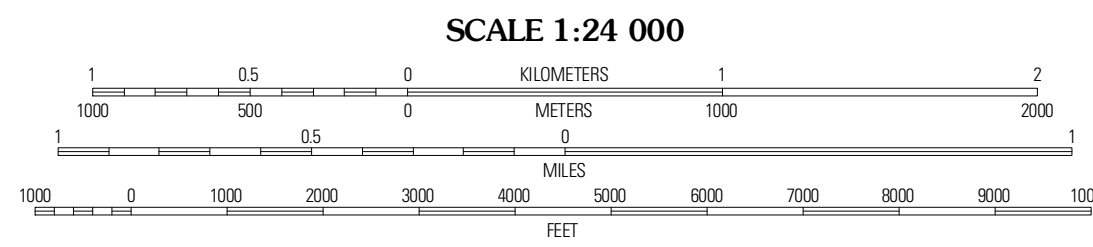
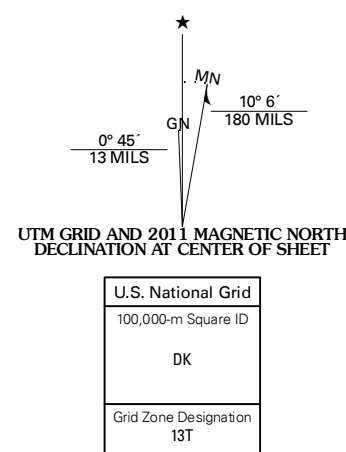


CABIN CREEK NE QUADRANGLE
WYOMING-MONTANA
7.5-MINUTE SERIES

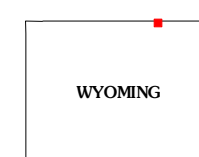


Produced by the United States Geological Survey
North American Datum of 1983 (NAD83)
World Geodetic System of 1984 (WGS84). Projection and
1 000-meter grid: Universal Transverse Mercator, Zone 13T
10 000-foot ticks: Wyoming Coordinate System of 1983 (east
central and east zones), Montana Coordinate System of 1983

Imagery.....N.A.I.P., July 2009
Roads.....©2006-2010 Tele Atlas
Names.....GNIS, 2010
Hydrography.....National Hydrography Dataset, 2009
Contours.....National Elevation Dataset, 2005
Boundaries.....Census, IBWC, IBC, USGS, 1972 - 2010



CONTOUR INTERVAL 20 FEET
NORTH AMERICAN VERTICAL DATUM OF 1988
This map was produced to conform with version 0.5.10
of the USGS US Topo Product Standard.
A metadata file associated with this product is draft version 0.5.16



ROAD CLASSIFICATION
Interstate Route State Route
US Route Local Road
Ramp 4WD
 Interstate Route US Route State Route

QUADRANGLE LOCATION

Bear Creek School	Sayle Hall	Badshaw Creek
Cabin Creek NW	Cabin Creek NE	Black Draw
Fawn Draw	Cabin Creek SE	Kline Draw

ADJOINING 7.5 QUADRANGLES

CABIN CREEK NE, WY-MT
2011