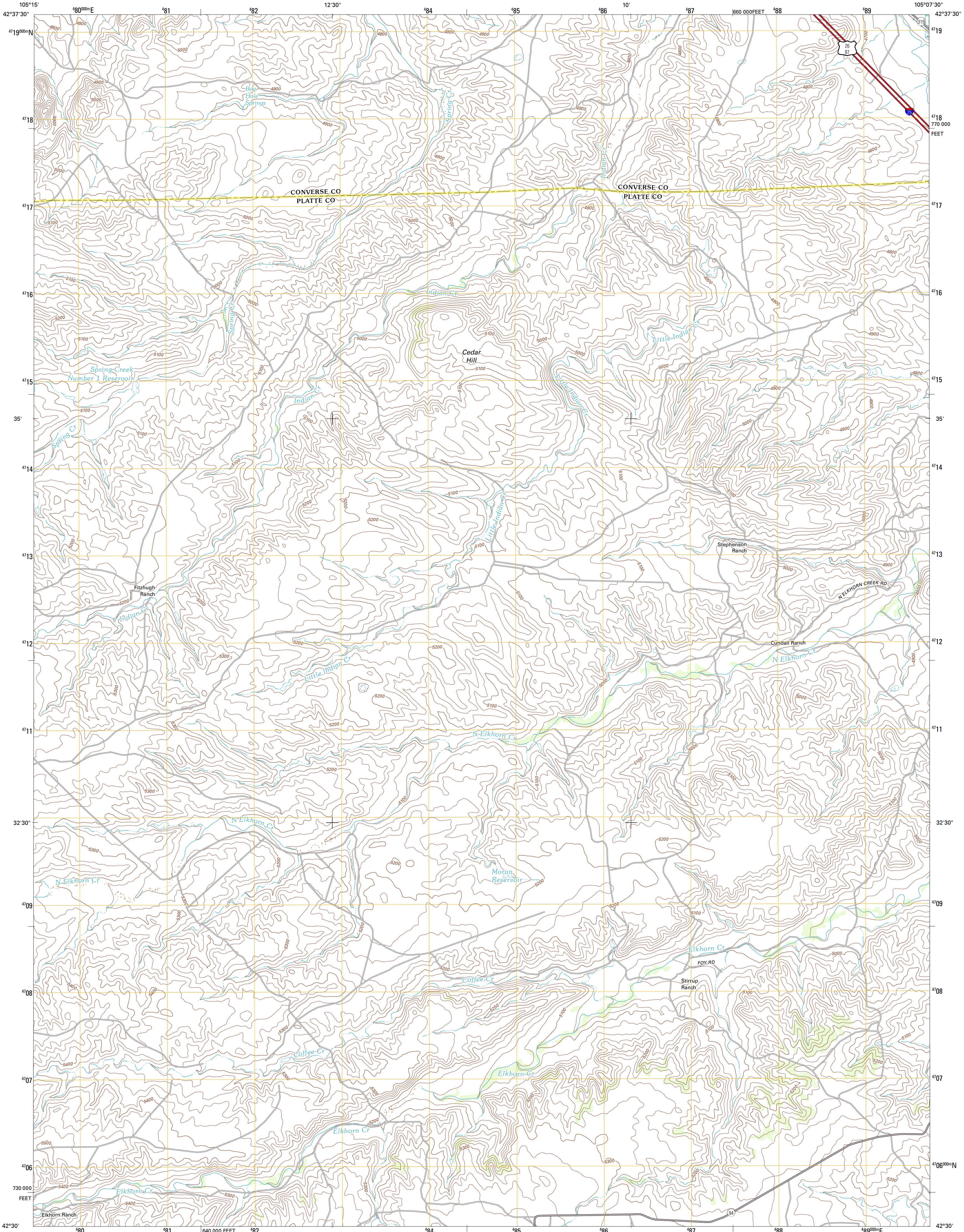




U.S. DEPARTMENT OF THE INTERIOR  
U. S. GEOLOGICAL SURVEY

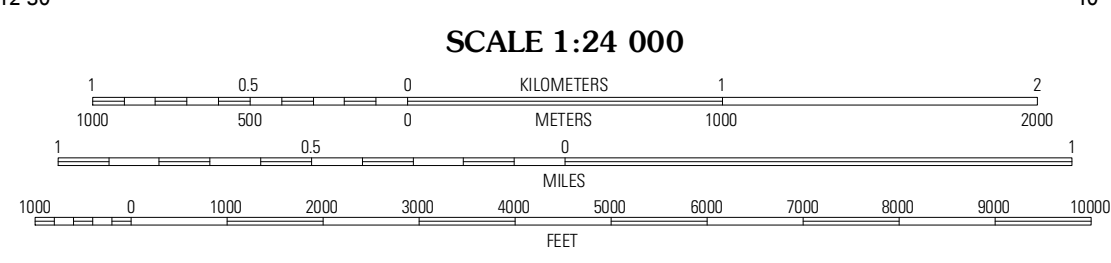
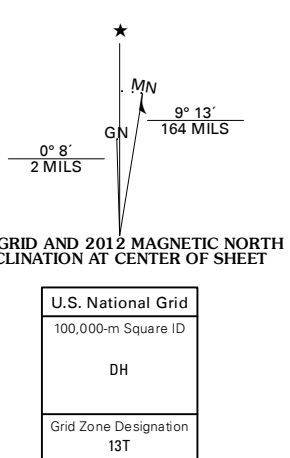


CEDAR HILL QUADRANGLE  
WYOMING  
7.5-MINUTE SERIES



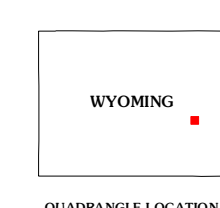
Produced by the United States Geological Survey  
North American Datum of 1983 (NAD83)  
World Geodetic System of 1984 (WGS84). Projection and  
1 000-meter grid: Universal Transverse Mercator, Zone 13T  
10 000-foot ticks: Wyoming Coordinate System of 1983 (east zone)

Imagery: N/AIP, August 2009  
Roads: ©2006-2011 TomTom  
Names: ©2006-2011 GNIS, 2011  
Hydrography: National Hydrography Dataset, 2009  
Contours: National Elevation Dataset, 2011  
Boundaries: Census, BWC, IBC, USGS, 1972 - 2010  
Public Land Survey System: BLM, 2006 - 2008



SCALE 1:24 000  
CONTOUR INTERVAL 20 FEET  
NORTH AMERICAN VERTICAL DATUM OF 1988

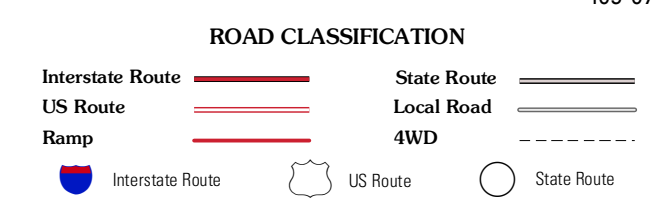
This map was produced to conform with the  
National Geospatial Program US Topo Product Standard, 2011.  
A metadata file associated with this product is draft version 0.6.3



QUADRANGLE LOCATION

Inive	Orin	Shawnee
Dills Ranch	Cedar Hill	Glendo
Esterbrook	Spring Creek	Sibley Peak

ADJOINING 7.5 QUADRANGLES



CEDAR HILL, WY  
2012