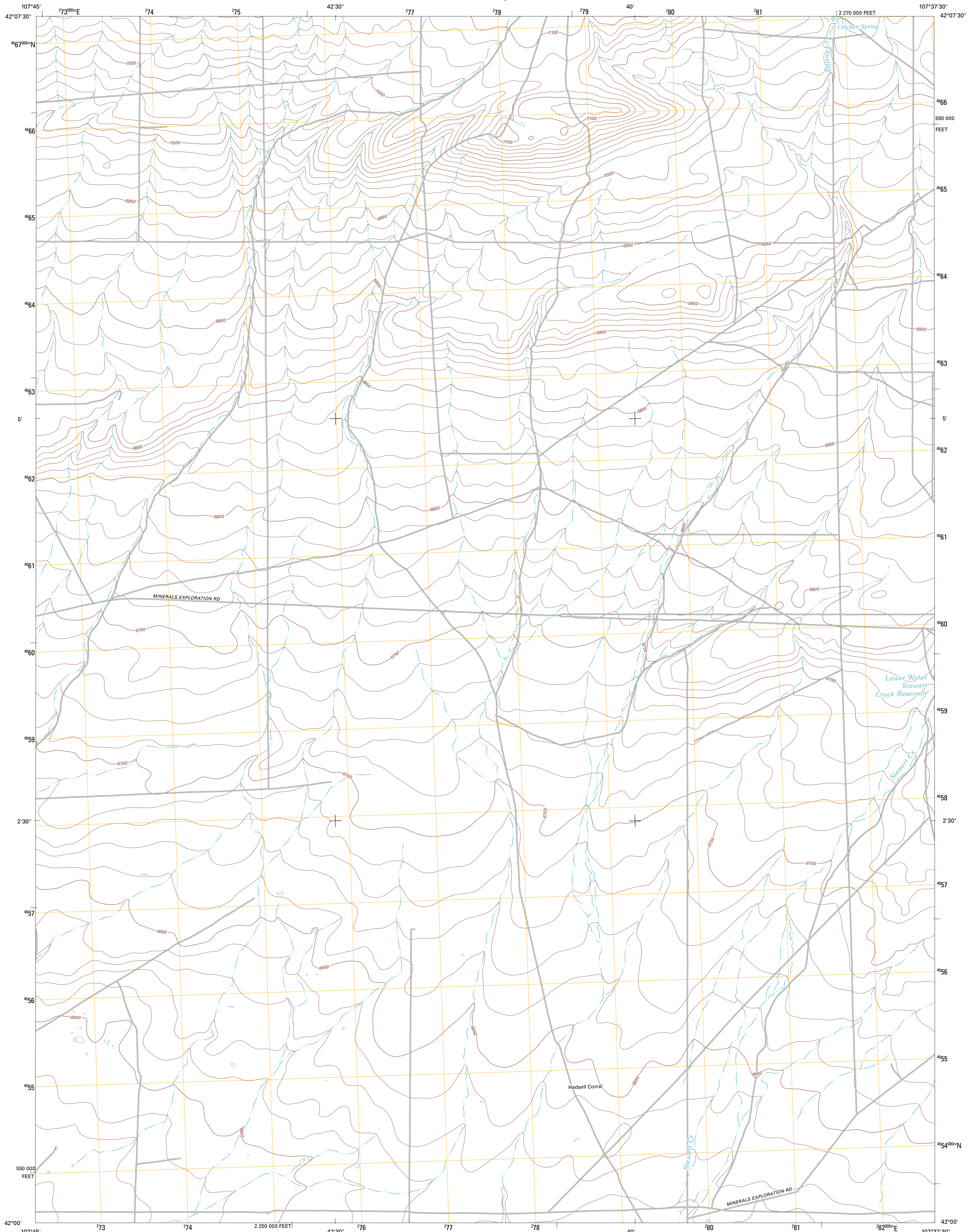




U.S. DEPARTMENT OF THE INTERIOR
U. S. GEOLOGICAL SURVEY

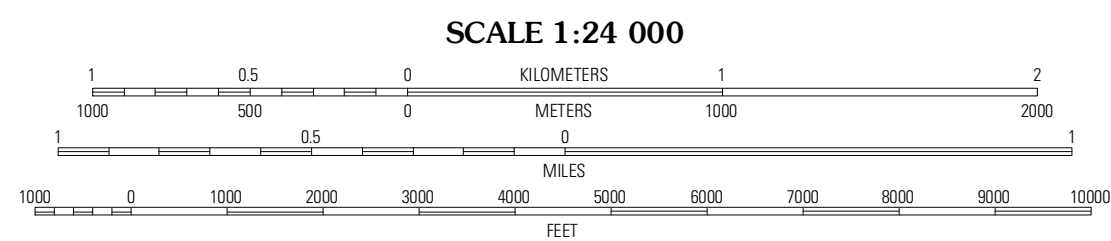
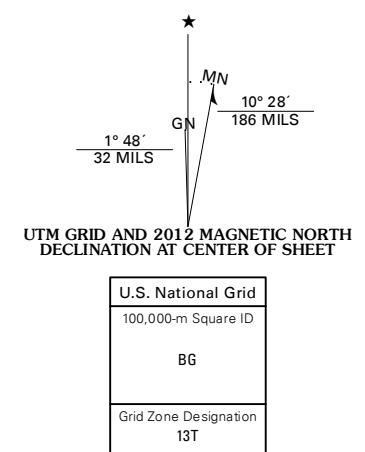


CHICKEN SPRING QUADRANGLE
WYOMING-SWEETWATER CO.
7.5-MINUTE SERIES

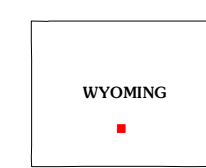


Produced by the United States Geological Survey
North American Datum of 1983 (NAD83)
World Geodetic System of 1984 (WGS84). Projection and
1 000-meter grid: Universal Transverse Mercator, Zone 13T
10 000-foot ticks: Wyoming Coordinate System of 1983
(west central zone)

Imagery.....NAIP, July 2009 - August 2009
Roads.....©2006-2011 TomTom
Names.....GNIS, 2011
Hydrography.....National Hydrography Dataset, 2009
Contours.....National Elevation Dataset, 2009
Boundaries.....Census, IBWC, BIC, USGS, 1972 - 2010
Public Land Survey System.....BLM, 2006 - 2008

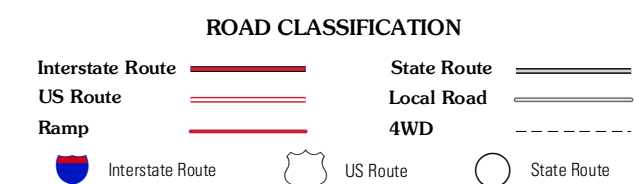


CONTOUR INTERVAL 10 FEET
NORTH AMERICAN VERTICAL DATUM OF 1988
This map was produced to conform with the
National Geospatial Program US Topo Product Standard, 2011.
A metadata file associated with this product is draft version 0.6.3



QUADRANGLE LOCATION

Osborne Well	Hadsell Spring	Bairoil
Sooner Reservoir	Chicken Spring	Ball Springs
Hansen Lake NE	Larsen Knoll	Buck Draw



CHICKEN SPRING, WY
2012

ADJOINING 7.5' QUADRANGLES