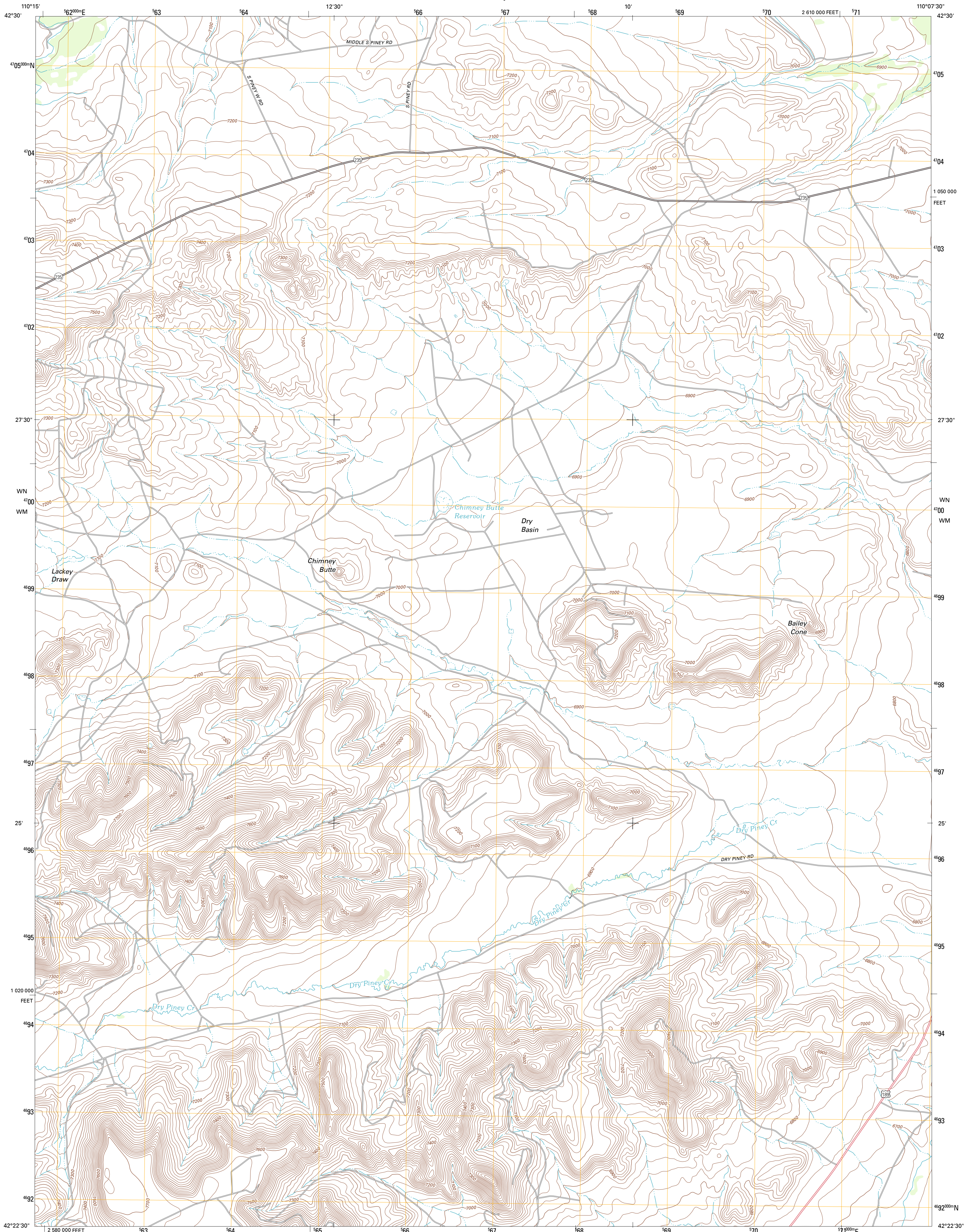




U.S. DEPARTMENT OF THE INTERIOR  
U. S. GEOLOGICAL SURVEY

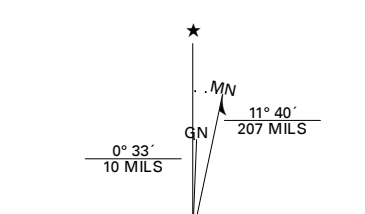


CHIMNEY BUTTE QUADRANGLE  
WYOMING-SUBLETTE CO.  
7.5-MINUTE SERIES

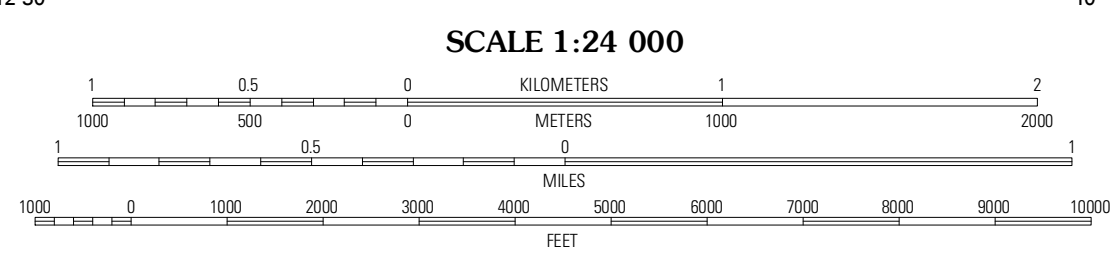


Produced by the United States Geological Survey  
North American Datum of 1983 (NAD83)  
World Geodetic System of 1984 (WGS84). Projection and  
1 000-meter grid: Universal Transverse Mercator, Zone 12T  
10 000-foot ticks: Wyoming Coordinate System of 1983  
(west zone)

Imagery.....NAIP, July 2009  
Roads.....©2006-2011 TomTom  
Names.....GNIS, 2011  
Hydrography.....National Hydrography Dataset, 2009  
Contours.....National Elevation Dataset, 2000  
Boundaries.....Census, BWC, BIC, USGS, 1972 - 2010  
Public Land Survey System.....BLM, 2006 - 2008

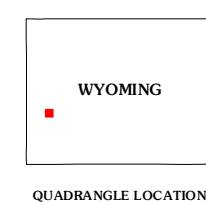


U.S. National Grid  
100,000m Square ID  
WN "18  
WM "18  
Grid Zone Designation  
12T



CONTOUR INTERVAL 20 FEET  
NORTH AMERICAN VERTICAL DATUM OF 1988

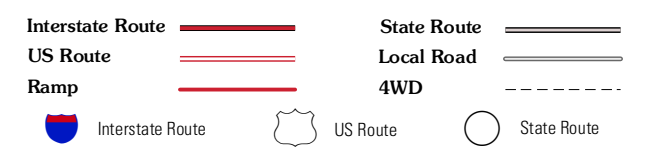
This map was produced to conform with the  
National Geospatial Program US Topo Product Standard, 2011.  
A metadata file associated with this product is draft version 0.6.3



QUADRANGLE LOCATION

|                     |                |                |
|---------------------|----------------|----------------|
| Deer Hill           | Big Piney West | Big Piney East |
| Cretaceous Mountain | Chimney Butte  | Millison Draw  |
| The Hogback         | La Barge       | La Barge SE    |

ROAD CLASSIFICATION



CHIMNEY BUTTE, WY  
2012

ADJOINING 7.5 QUADRANGLES