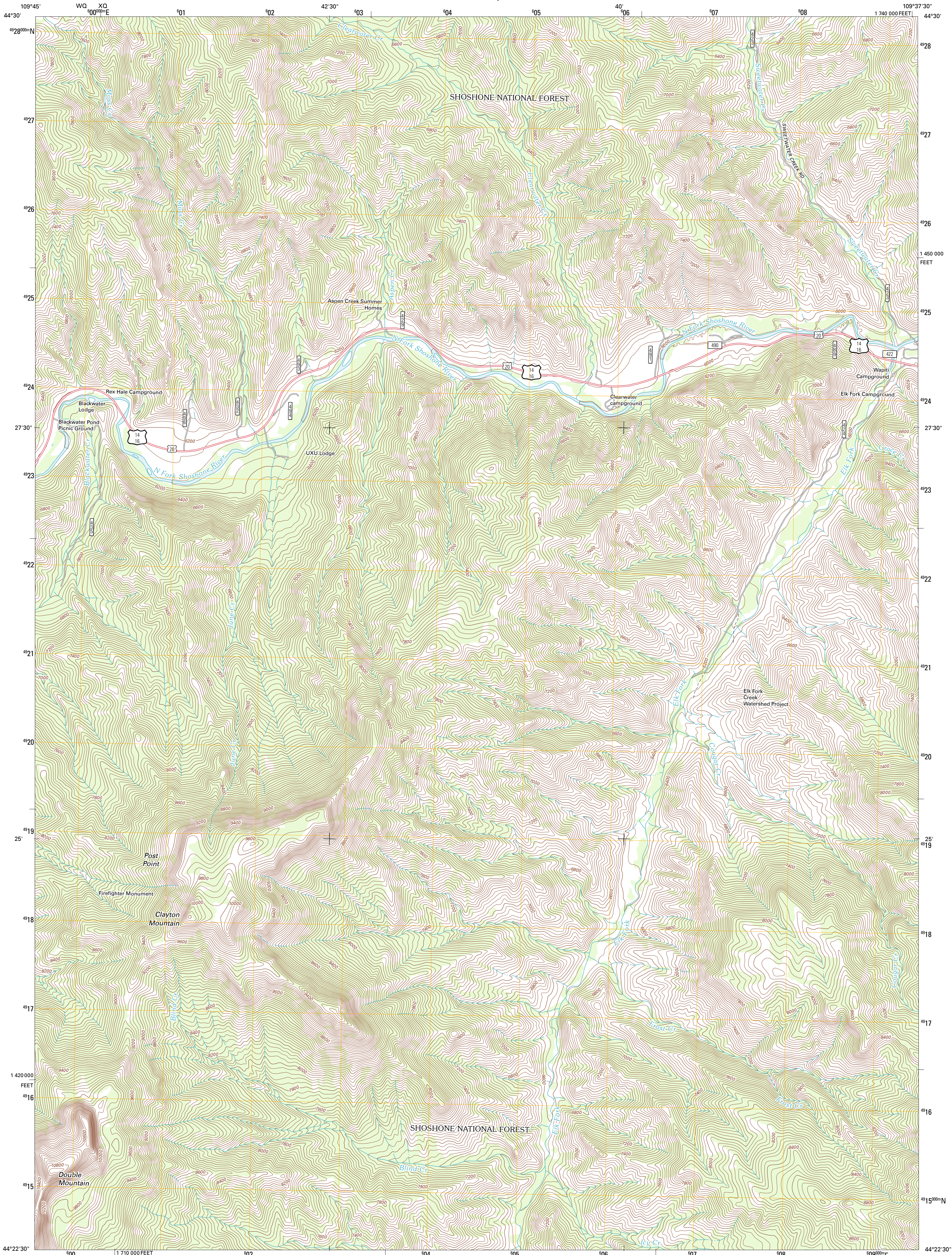




U.S. DEPARTMENT OF THE INTERIOR
U. S. GEOLOGICAL SURVEY

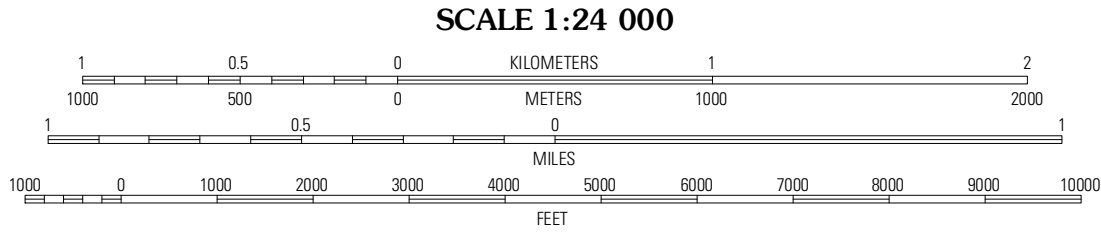
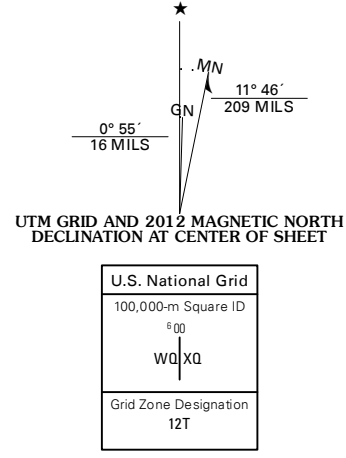


CLAYTON MOUNTAIN QUADRANGLE
WYOMING-PARK CO.
7.5-MINUTE SERIES

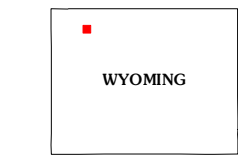


Produced by the United States Geological Survey
North American Datum of 1983 (NAD83)
World Geodetic System of 1984 (WGS84). Projection and
1 000-meter grid: Universal Transverse Mercator, Zone 12T
10 000-foot ticks: Wyoming Coordinate System of 1983
(west central zone)

Imagery.....NAIP, August 2009
Roads.....©2006-2011 TomTom
Roads within US Forest Service Lands.....FS Topo Data
with limited Forest Service updates, 2009
Names.....GNIS, 2011
Hydrography.....National Hydrography Dataset, 2009
Contours.....National Elevation Dataset, 2000
Boundaries.....Census, IBWC, IBC, USGS, 1972 - 2010
Public Land Survey System.....BLM, 2006 - 2008



CONTOUR INTERVAL 40 FEET
NORTH AMERICAN VERTICAL DATUM OF 1988
This map was produced to conform with the
National Geospatial Program US Topo Product Standard, 2011.
A metadata file associated with this product is draft version 0.6.3



Sunlight Peak	Jaggar Peak	Dead Indian Peak
Chimney Rock	Clayton Mountain	Flag Peak
Sheep Mesa	Lake Creek	Parmigan Mountain

ROAD CLASSIFICATION			
Interstate Route	State Route	US Route	Local Road
US Route	4WD	FS Primary Route	FS Passenger Route
Ramp		FS High Clearance Route	

Check with local Forest Service unit
for current travel conditions and restrictions.

CLAYTON MOUNTAIN, WY
2012