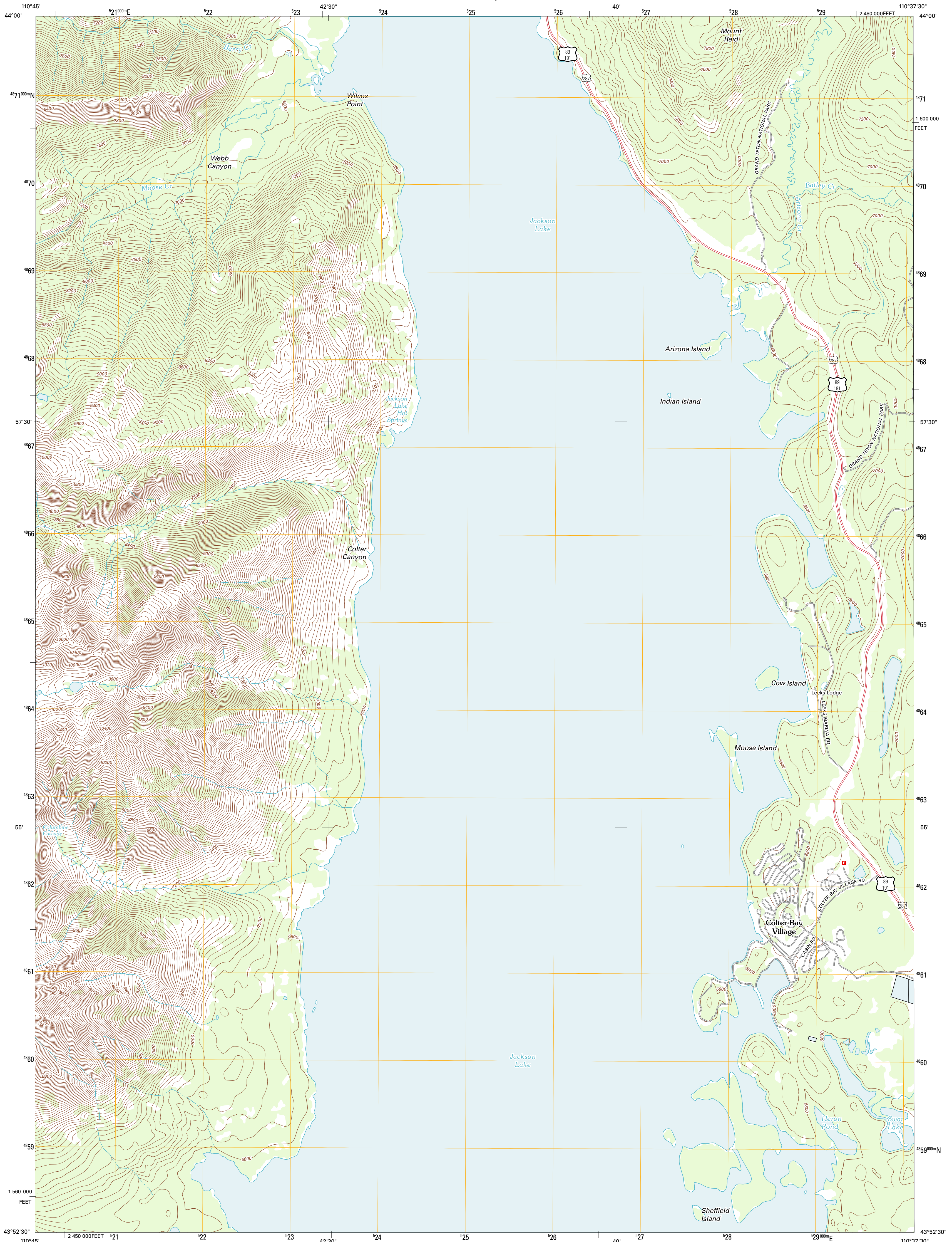




U.S. DEPARTMENT OF THE INTERIOR
U. S. GEOLOGICAL SURVEY

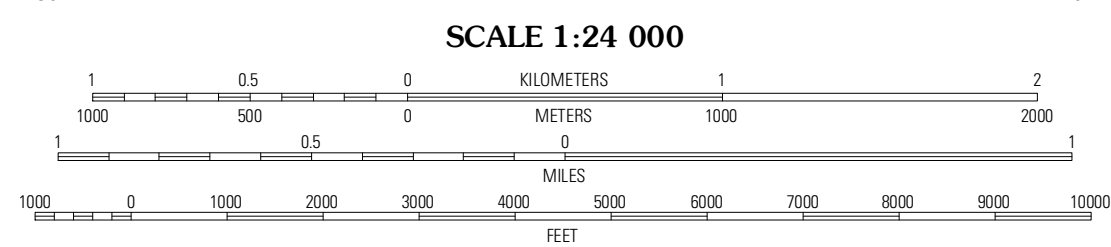
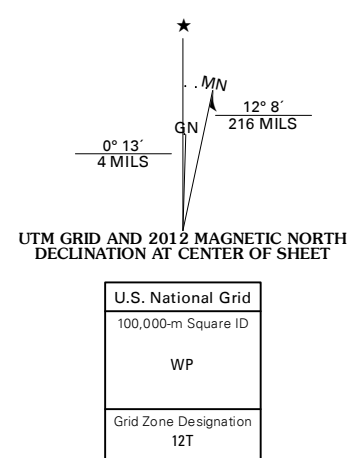


COLTER BAY QUADRANGLE
WYOMING-TETON CO.
7.5-MINUTE SERIES



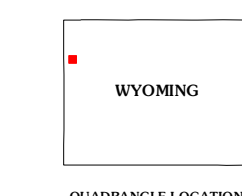
Produced by the United States Geological Survey
North American Datum of 1983 (NAD83)
World Geodetic System of 1984 (WGS84), Projection and
1 000-meter grid: Universal Transverse Mercator, Zone 12T
10 000-foot ticks: Wyoming Coordinate System of 1983
(west zone)

Imagery.....NAIP, August 2009
Roads.....©2006-2011 TomTom
Names.....GNIS, 2011
Hydrography.....National Hydrography Dataset, 2009
Contours.....National Elevation Dataset, 1999
Boundaries.....Census, BIVC, IBC, USGS, 1972 - 2010
Public Land Survey System.....BLM, 2006 - 2008



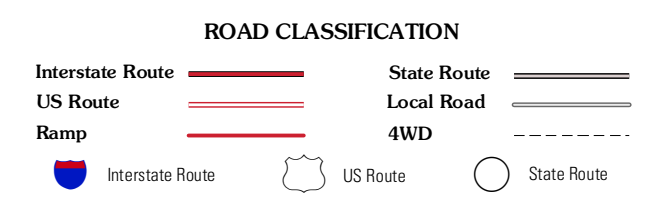
CONTOUR INTERVAL 40 FEET
NORTH AMERICAN VERTICAL DATUM OF 1988

This map was produced to conform with the
National Geospatial Program US Topo Product Standard, 2011.
A metadata file associated with this product is draft version 0.6.3



QUADRANGLE LOCATION

Survey Peak	Flag Ranch	Huckleberry Mountain
Ranger Peak	Colter Bay	Two Ocean Lake
Mount Moran	Jenny Lake	Moran



COLTER BAY, WY
2012

ADJOINING 7.5' QUADRANGLES