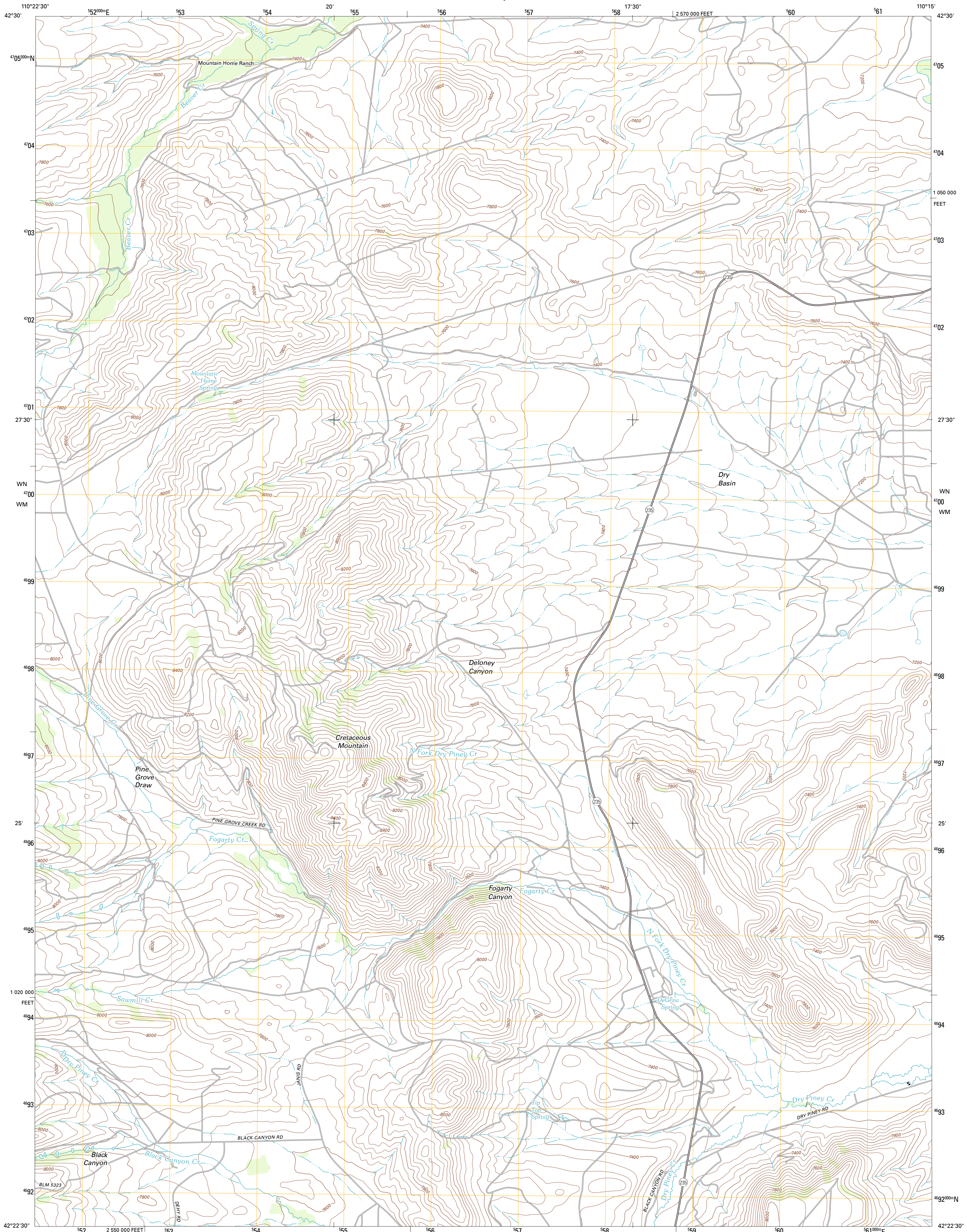




U.S. DEPARTMENT OF THE INTERIOR
U. S. GEOLOGICAL SURVEY

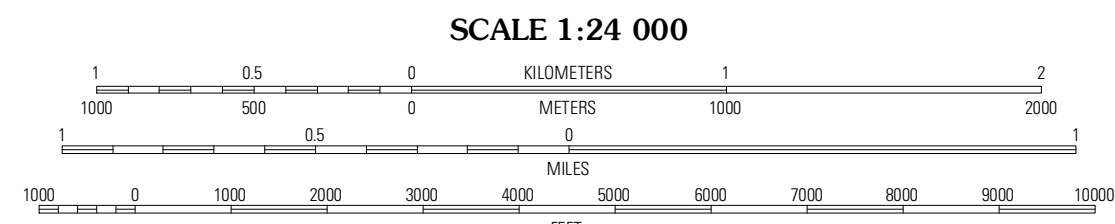
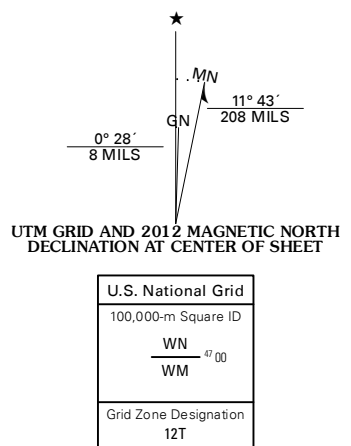


CRETACEOUS MOUNTAIN QUADRANGLE
WYOMING-SUBLETTE CO.
7.5-MINUTE SERIES

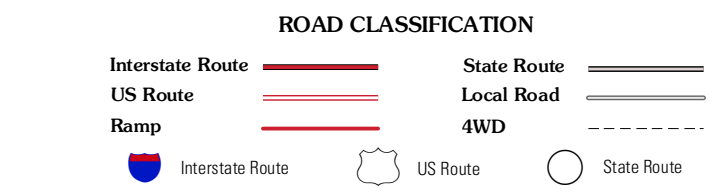
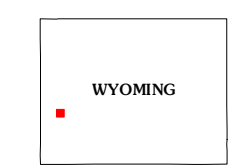


Produced by the United States Geological Survey
North American Datum of 1983 (NAD83)
World Geodetic System of 1984 (WGS84). Projection and
1 000-meter grid: Universal Transverse Mercator, Zone 12T
10 000-foot ticks: Wyoming Coordinate System of 1983
(west zone)

Imagery.....NAIP, July 2009
Roads.....©2006-2011 TomTom
Names.....GNIS, 2011
Hydrography.....National Hydrography Dataset, 2009
Contours.....National Elevation Dataset, 2000
Boundaries.....Census, BWC, BIC, USGS, 1972 - 2010
Public Land Survey System.....BLM, 2006 - 2008



SCALE 1:24 000
CONTOUR INTERVAL 40 FEET
NORTH AMERICAN VERTICAL DATUM OF 1988
This map was produced to conform with the
National Geospatial Program US Topo Product Standard, 2011.
A metadata file associated with this product is draft version 0.6.3



QUADRANGLE LOCATION

Springman Creek	Deer Hill	Big Piney West
Pine Grove Bidge	Cretaceous Mountain	Chimney Butte
Lake Mountain	The Hogback	La Barge

ADJOINING 7.5 QUADRANGLES

CRETACEOUS MOUNTAIN, WY
2012