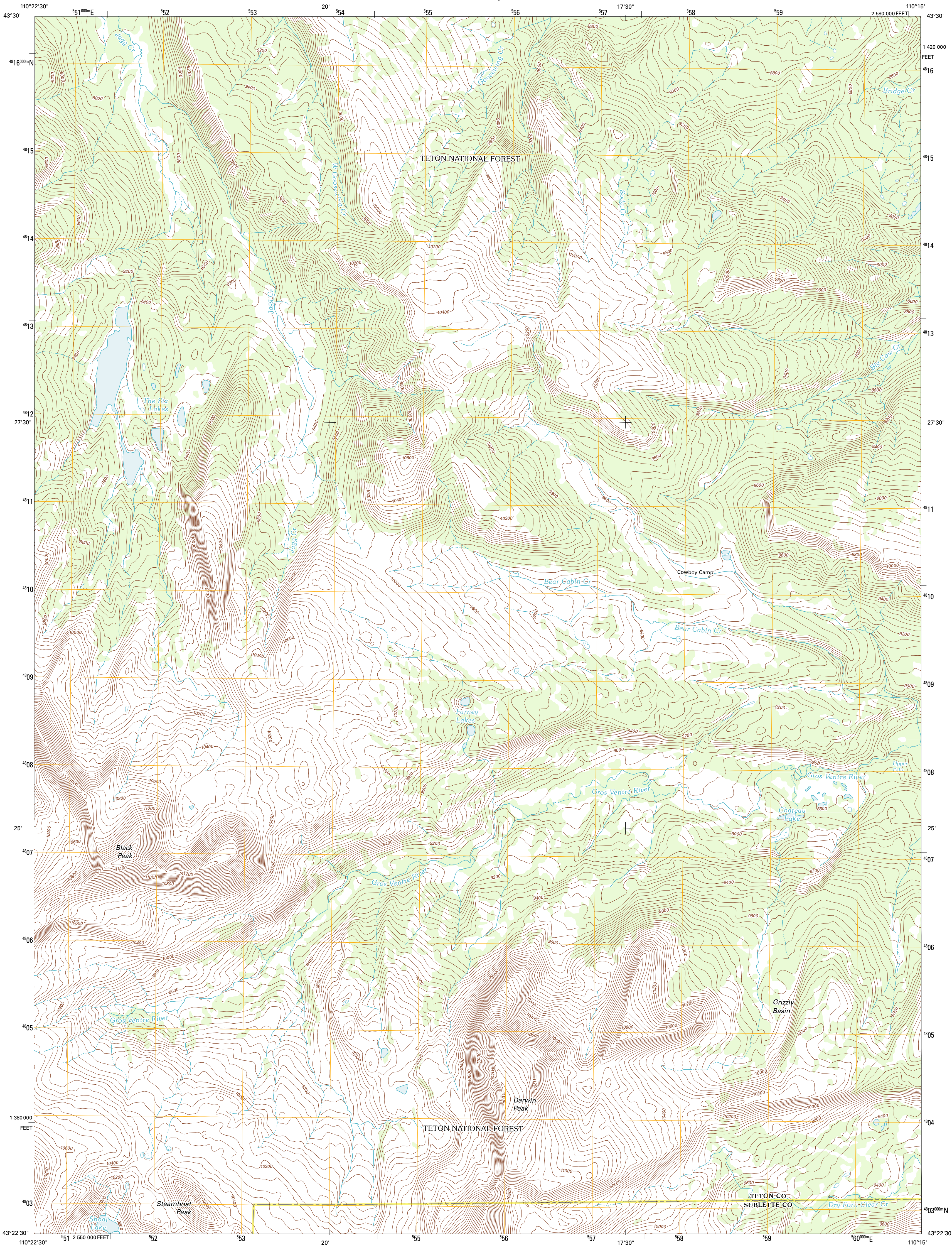




U.S. DEPARTMENT OF THE INTERIOR  
U. S. GEOLOGICAL SURVEY

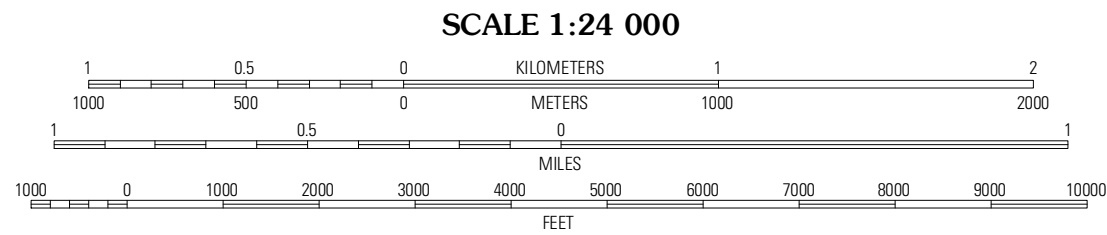
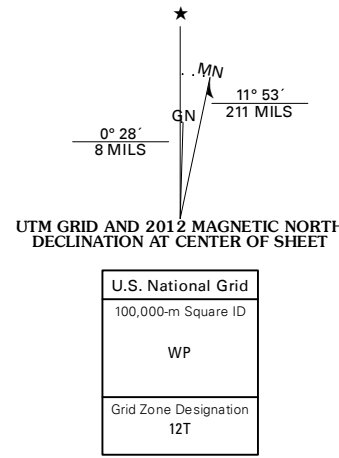


DARWIN PEAK QUADRANGLE  
WYOMING  
7.5-MINUTE SERIES

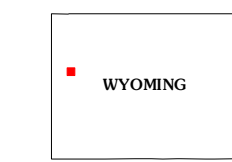


Produced by the United States Geological Survey  
North American Datum of 1983 (NAD83)  
World Geodetic System of 1984 (WGS84). Projection and  
1 000-meter grid: Universal Transverse Mercator, Zone 12T  
10 000-foot ticks: Wyoming Coordinate System of 1983  
(west zone)

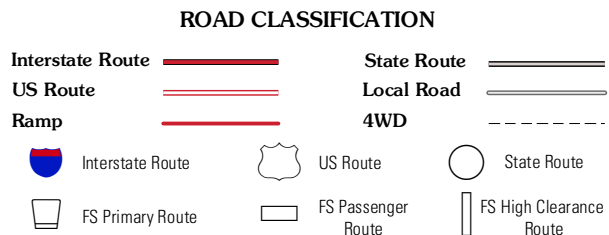
Imagery.....NAIP, July 2009  
Roads.....©2006-2011 10m Tom  
Roads within US Forest Service Lands.....FS Topo Data  
with limited Forest Service updates, 2009  
Names.....GNIS, 2011  
Hydrography.....National Hydrography Dataset, 2009  
Contours.....National Elevation Dataset, 2000  
Boundaries.....Census, IBWC, IBC, USGS, 1972 - 2010  
Public Land Survey System.....BLM, 2006 - 2008



CONTOUR INTERVAL 40 FEET  
NORTH AMERICAN VERTICAL DATUM OF 1988  
This map was produced to conform with the  
National Geospatial Program US Topo Product Standard, 2011.  
A metadata file associated with this product is draft version 0.6.3



Grizzly Lake	Upper Slide Lake	Burnt Mountain
Crystal Peak	Darwin Peak	Ouzel Falls
Granite Falls	Doubletop Peak	Toot Peak



Check with local Forest Service unit  
for current travel conditions and restrictions.

DARWIN PEAK, WY  
2012

ADJOINING 7.5 QUADRANGLES