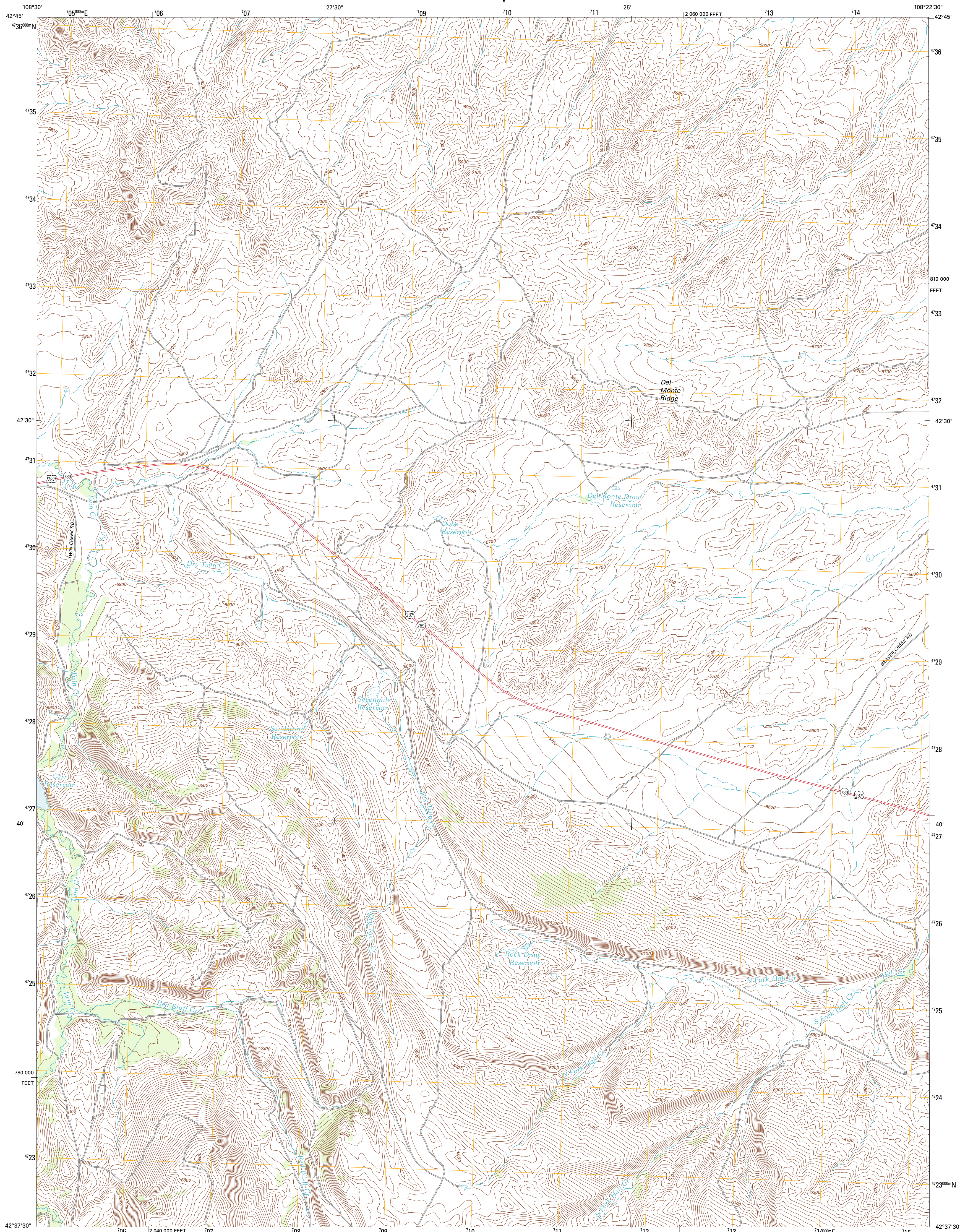




U.S. DEPARTMENT OF THE INTERIOR  
U. S. GEOLOGICAL SURVEY

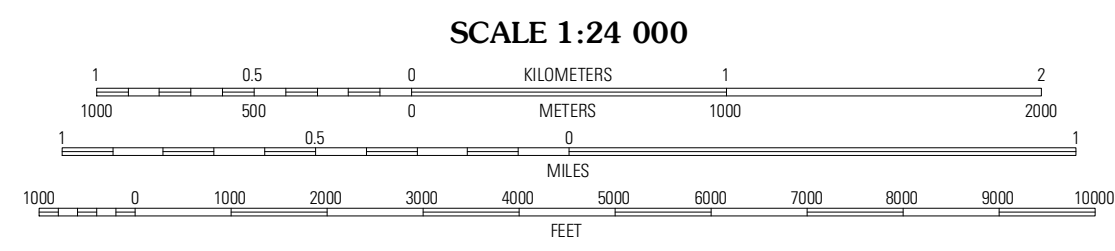
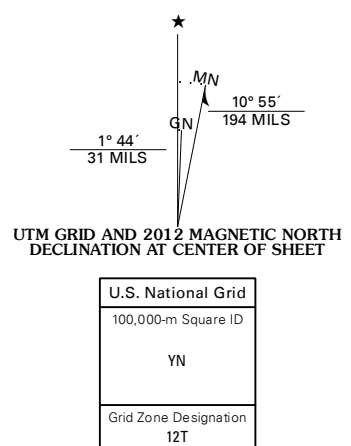


DEL MONTE RIDGE QUADRANGLE  
WYOMING-FREMONT CO.  
7.5-MINUTE SERIES

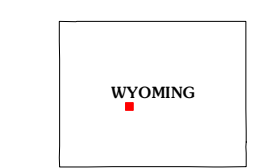


Produced by the United States Geological Survey  
North American Datum of 1983 (NAD83)  
World Geodetic System of 1984 (WGS84). Projection and  
1 000-meter grid: Universal Transverse Mercator, Zone 12T  
10 000-foot ticks: Wyoming Coordinate System of 1983  
(west central zone)

Imagery.....NAIP, July 2009  
Roads.....©2006-2011 TomTom  
Names.....GNIS, 2011  
Hydrography.....National Hydrography Dataset, 2009  
Contours.....National Elevation Dataset, 2008  
Boundaries.....Census, IBIC, IBC, USGS, 1972 - 2010  
Public Land Survey System.....BLM, 2006 - 2008



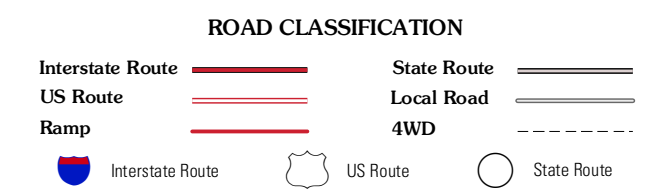
CONTOUR INTERVAL 20 FEET  
NORTH AMERICAN VERTICAL DATUM OF 1988  
This map was produced to conform with the  
National Geospatial Program US Topo Product Standard, 2011.  
A metadata file associated with this product is draft version 0.6.3



QUADRANGLE LOCATION

Lander SE	Ninemile Hill	Bringolf Ranch
Weiser Pass	Del Monte Ridge	Yellowstone Ranch
Gravel Spring	Schoerdtin Mountain	Red Canyon

ADJOINING 7.5 QUADRANGLES



DEL MONTE RIDGE, WY  
2012