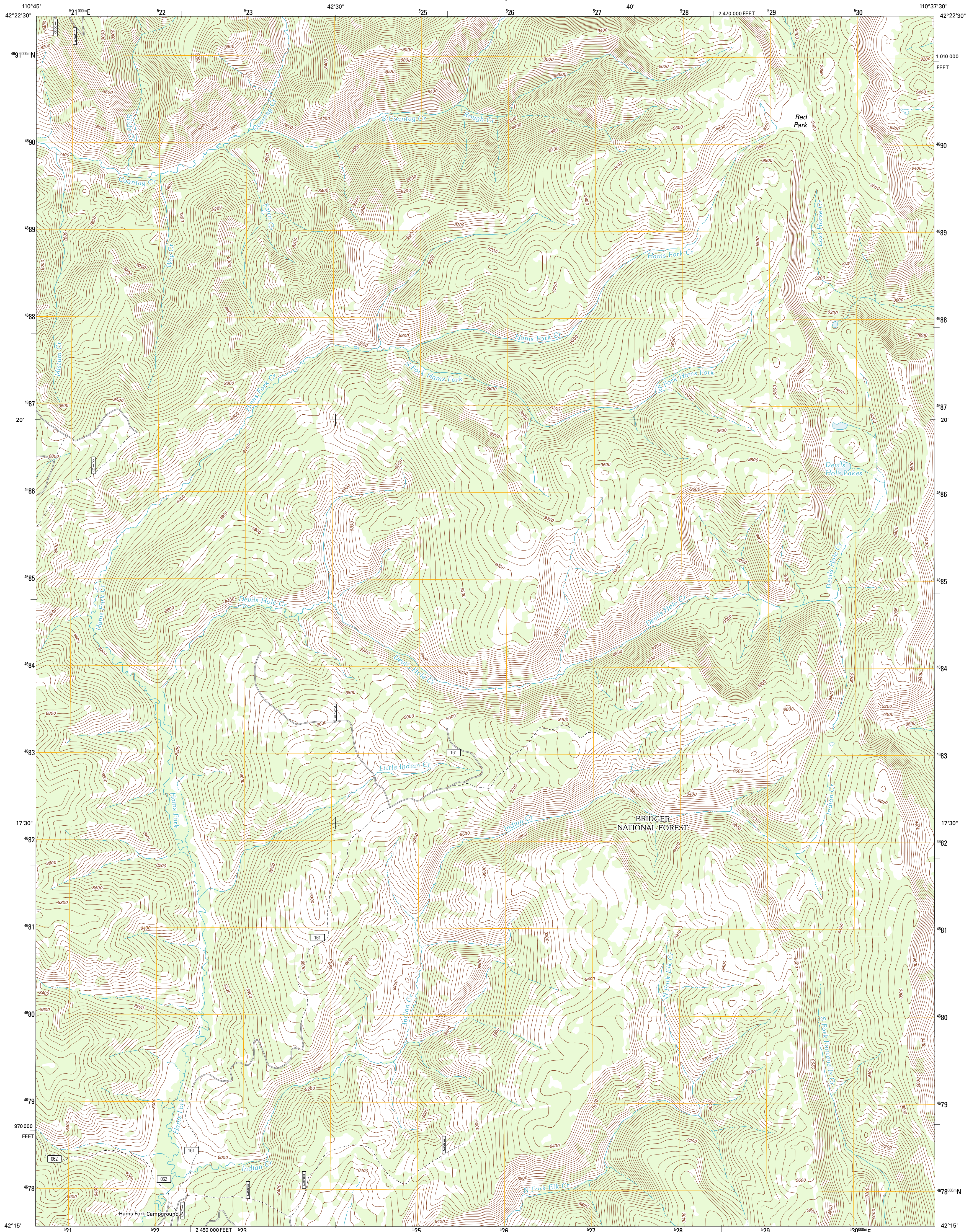




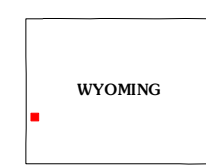
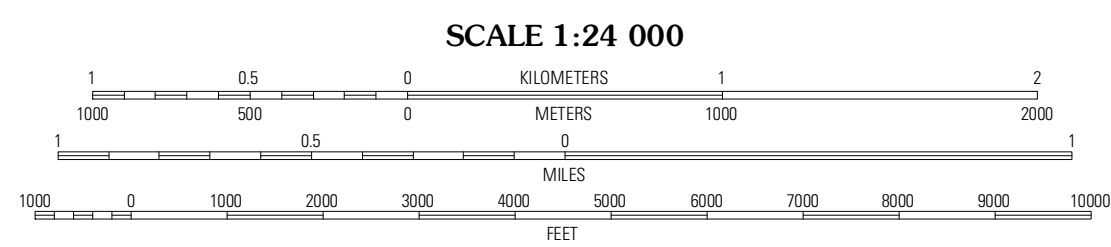
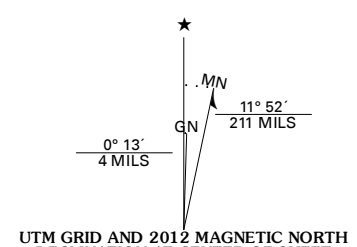
U.S. DEPARTMENT OF THE INTERIOR
U. S. GEOLOGICAL SURVEY



DEVILS HOLE CREEK QUADRANGLE
WYOMING-LINCOLN CO.
7.5-MINUTE SERIES

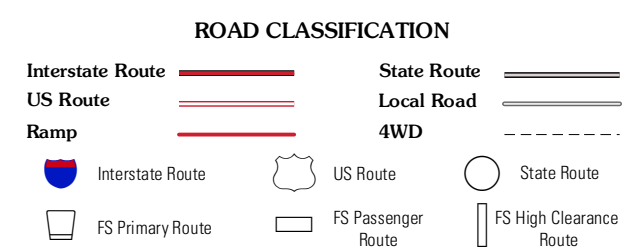


Produced by the United States Geological Survey
North American Datum of 1983 (NAD83)
World Geodetic System of 1984 (WGS84). Projection and
1 000-meter grid: Universal Transverse Mercator, Zone 12T
10 000-foot ticks: Wyoming Coordinate System of 1983
(west zone)



QUADRANGLE LOCATION

Porcupine Creek	Graham Peak	Mount Thompson
Big Park	Devils Hole Creek	Coal Creek
Nugent Park	Pole Creek	Fontenelle Basin



Check with local Forest Service unit for current travel conditions and restrictions.

DEVILS HOLE CREEK, WY
2012

Imagery.....NAP, July 2009
Roads.....©2006-2011 TomTom
Roads within US Forest Service Lands.....FS Topo Data with limited Forest Service updates, 2009
Names.....GNIS, 2011
Hydrography.....National Hydrography Dataset, 2009
Contours.....National Elevation Dataset, 2000
Boundaries.....Census, IBWC, IBC, USGS, 1972 - 2010
Public Land Survey System.....BLM, 2006 - 2008

U.S. National Grid	100,000m Square ID
WM	
Grid Zone Designation	12T

CONTOUR INTERVAL 40 FEET
NORTH AMERICAN VERTICAL DATUM OF 1988
This map was produced to conform with the National Geospatial Program US Topo Product Standard, 2011. A metadata file associated with this product is draft version 0.6.3

ADJOINING 7.5 QUADRANGLES