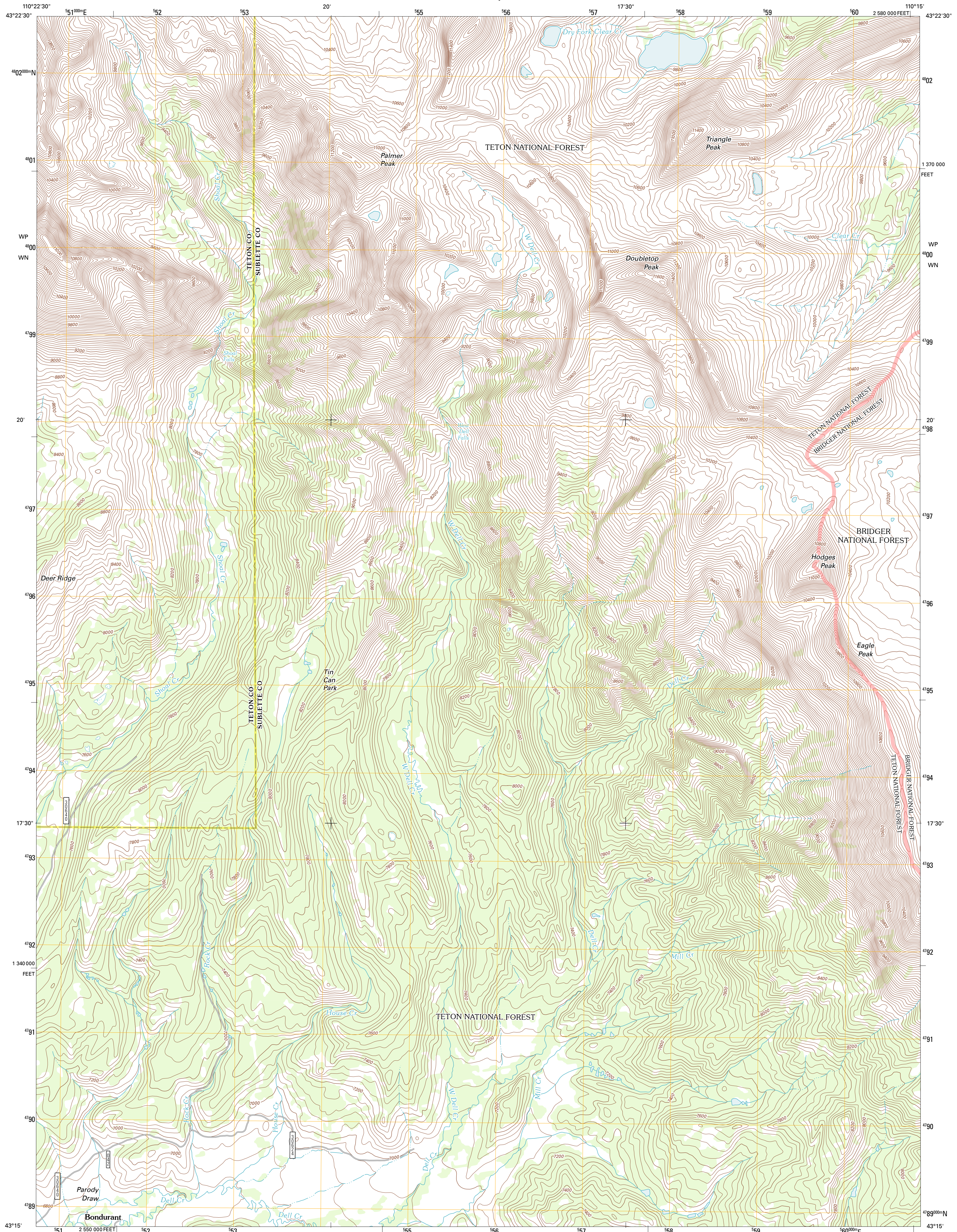




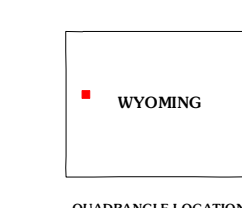
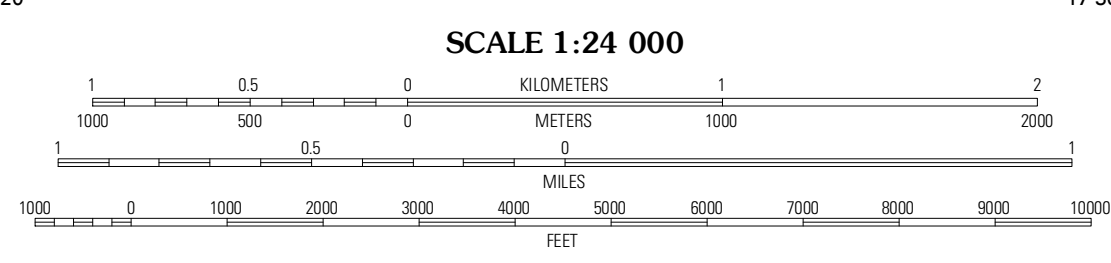
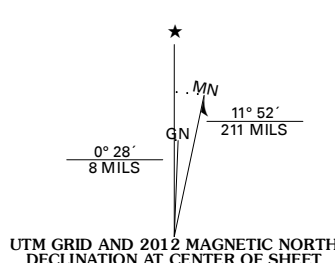
U.S. DEPARTMENT OF THE INTERIOR
U. S. GEOLOGICAL SURVEY



DOUBLETOP PEAK QUADRANGLE
WYOMING
7.5-MINUTE SERIES

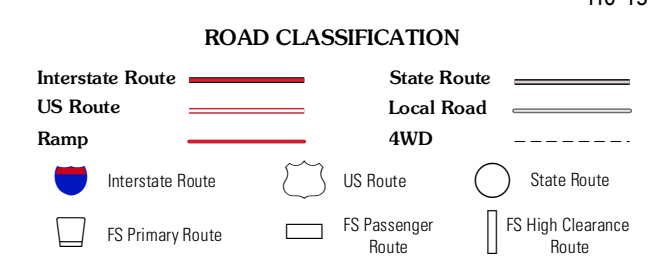


Produced by the United States Geological Survey
North American Datum of 1983 (NAD83)
World Geodetic System of 1984 (WGS84). Projection and
1 000-meter grid: Universal Transverse Mercator, Zone 12T
10 000-foot ticks: Wyoming Coordinate System of 1983
(west zone)



QUADRANGLE LOCATION

Crystal Peak	Damson Peak	Ouzel Falls
Granite Falls	Doubletop Peak	Toot Peak
Bondurant	Raspberry Ridge	Pass Peak



Check with local Forest Service unit for current travel conditions and restrictions.

DOUBLETOP PEAK, WY
2012

Imagery: NAIIP, July 2009
Roads: ©2006-2011 TomTom
Roads within US Forest Service Lands: FSTopo Data with limited Forest Service updates, 2009
Names: GNS, 2011
Hydrography: National Hydrography Dataset, 2009
Contours: National Elevation Dataset, 2000
Boundaries: Census, IBWC, IBC, USGS, 1972 - 2010
Public Land Survey System: BLM, 2006 - 2008

CONTOUR INTERVAL 40 FEET
NORTH AMERICAN VERTICAL DATUM OF 1988

This map was produced to conform with the National Geospatial Program US Topo Product Standard, 2011. A metadata file associated with this product is draft version 0.6.3

ADJOINING 7.5 QUADRANGLES