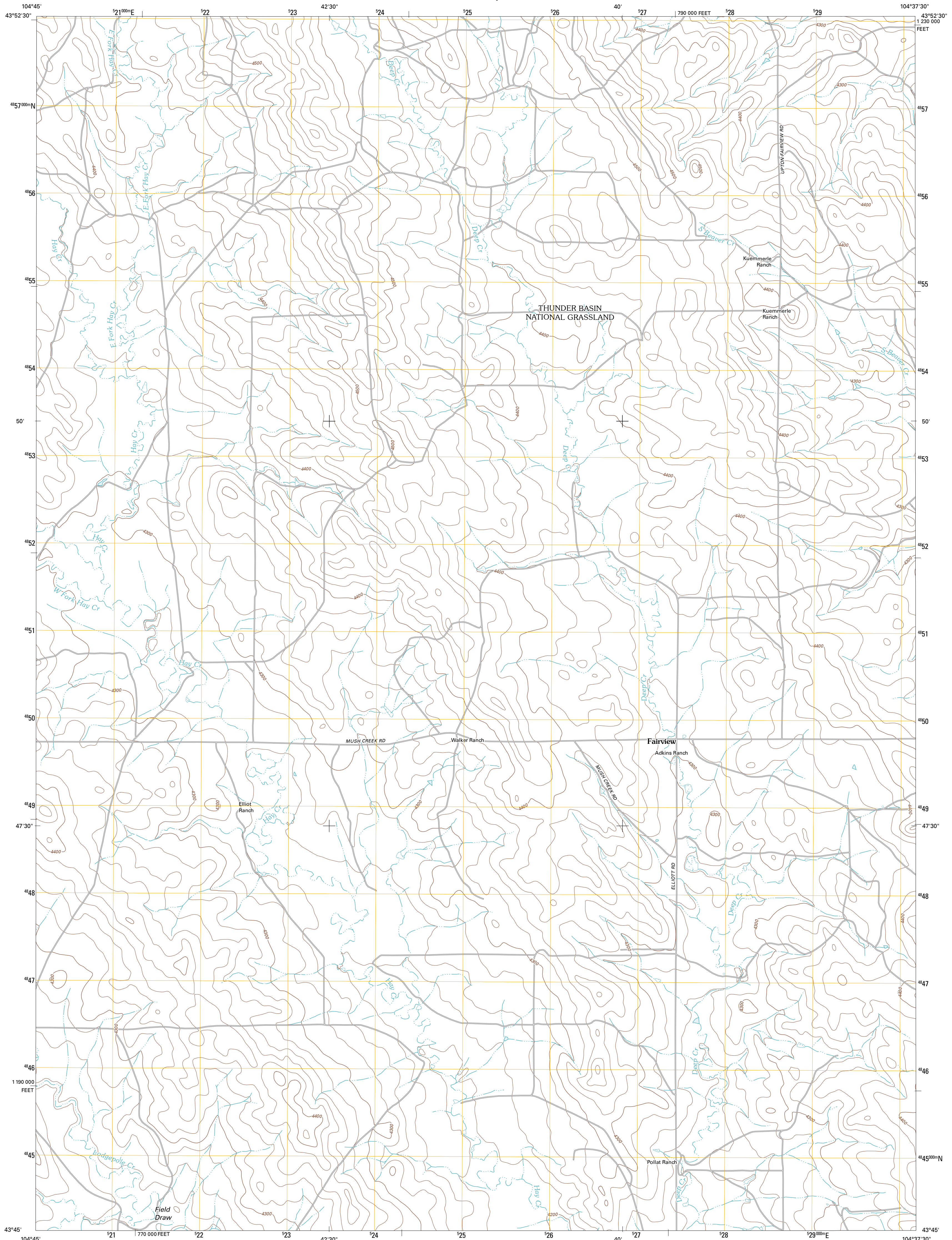




U.S. DEPARTMENT OF THE INTERIOR
U. S. GEOLOGICAL SURVEY

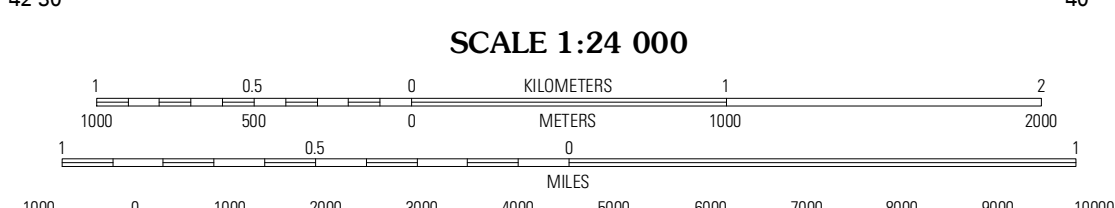
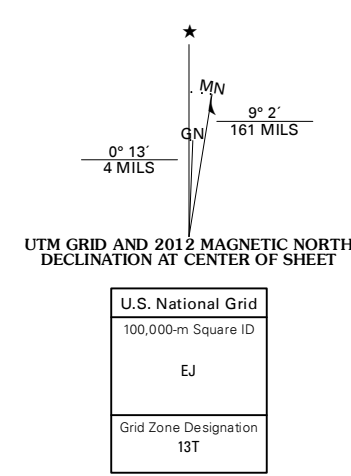


FAIRVIEW QUADRANGLE
WYOMING-WESTON CO.
7.5-MINUTE SERIES



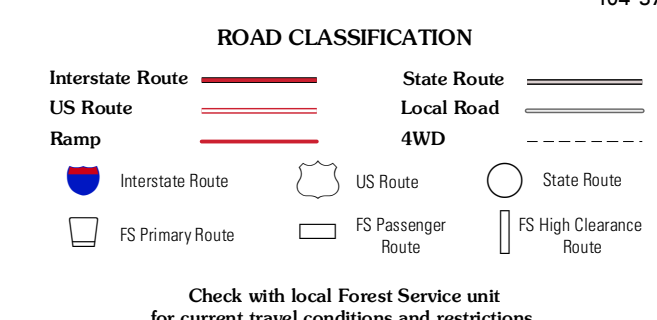
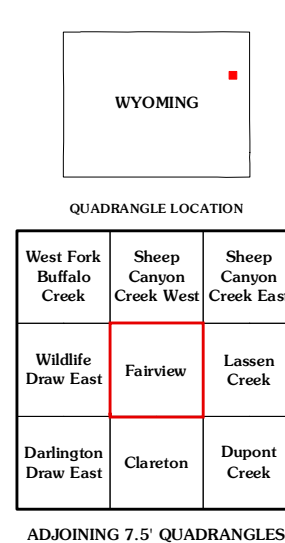
Produced by the United States Geological Survey
North American Datum of 1983 (NAD83)
World Geodetic System of 1984 (WGS84). Projection and
1 000-meter grid: Universal Transverse Mercator, Zone 13T
10 000-foot ticks: Wyoming Coordinate System of 1983 (east zone)

Imagery.....NAIP, August 2009
Roads.....©2006-2011, TomTom
Roads within US Forest Service Lands.....FS Topo Data
with limited Forest Service updates, 2009
Names.....GNIS, 2011
Hydrography.....National Hydrography Dataset, 2009
Contours.....National Elevation Dataset, 2007
Boundaries.....Census, BWC, IBC, USGS, 1972 - 2010
Public Land Survey System.....BLM, 2006 - 2008



CONTOUR INTERVAL 20 FEET
NORTH AMERICAN VERTICAL DATUM OF 1988

This map was produced to conform with the
National Geospatial Program US Topo Product Standard, 2011.
A metadata file associated with this product is draft version 0.6.3



Check with local Forest Service unit for current travel conditions and restrictions.

FAIRVIEW, WY
2012

ADJOINING 7.5' QUADRANGLES