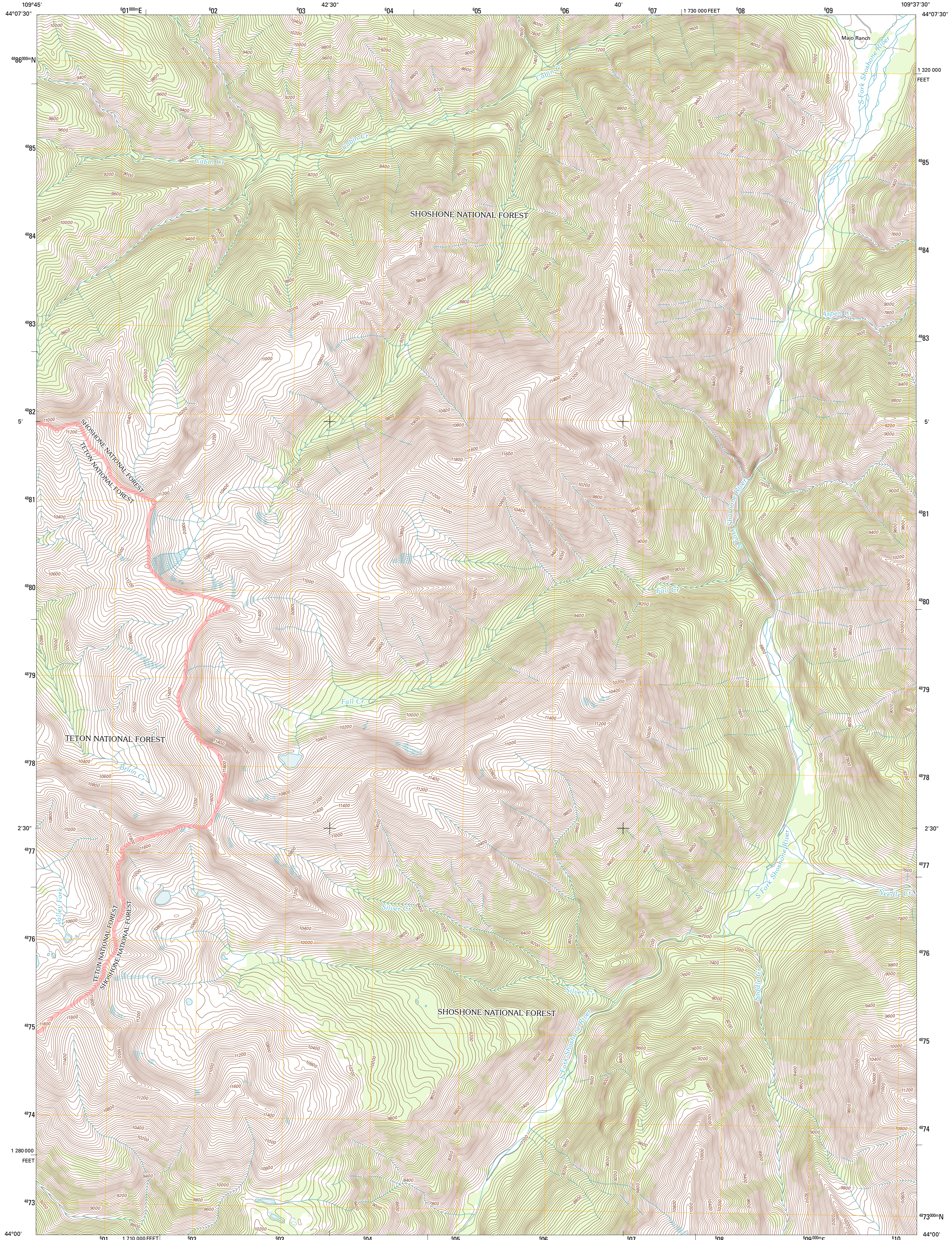




U.S. DEPARTMENT OF THE INTERIOR
U. S. GEOLOGICAL SURVEY

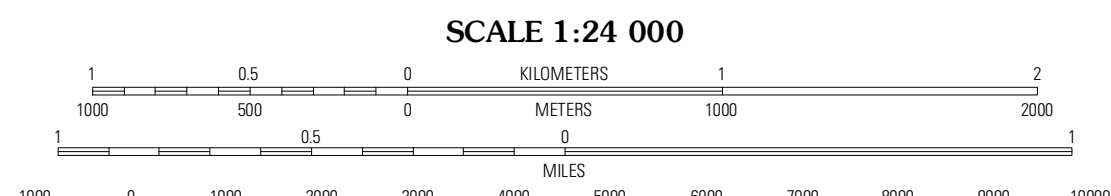
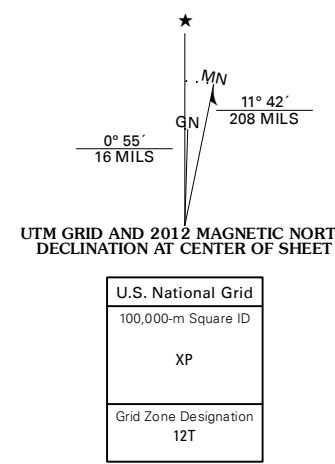


FALL CREEK QUADRANGLE
WYOMING-PARK CO.
7.5-MINUTE SERIES

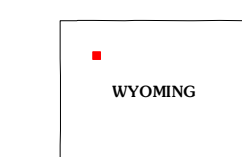


Produced by the United States Geological Survey
North American Datum of 1983 (NAD83)
World Geodetic System of 1984 (WGS84). Projection and
1 000-meter grid: Universal Transverse Mercator, Zone 12T
10 000-foot ticks: Wyoming Coordinate System of 1983
(west central zone)

Imagery.....NAIP, August 2009
Roads.....©2006-2011 TomTom
Roads within US Forest Service Lands.....FS Data
with limited Forest Service updates, 2009
Names.....GNIS, 2011
Hydrography.....National Hydrography Dataset, 2009
Contours.....National Elevation Dataset, 1999
Boundaries.....Census, IBWC, IBC, USGS, 1972 - 2010
Public Land Survey System.....BLM, 2006 - 2008



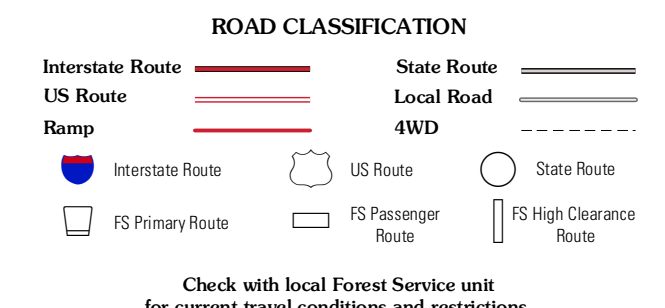
CONTOUR INTERVAL 40 FEET
NORTH AMERICAN VERTICAL DATUM OF 1988
This map was produced to conform with the
National Geospatial Program US Topo Product Standard, 2011.
A metadata file associated with this product is draft version 0.6.3



QUADRANGLE LOCATION

Therofare Buttes	Clouds Home Peak	Valley
Yellow Mountain	Fall Creek	Needle Mountain
Younts Peak	Hardluck Mountain	Emerald Lake

ADJOINING 7.5' QUADRANGLES



FALL CREEK, WY
2012