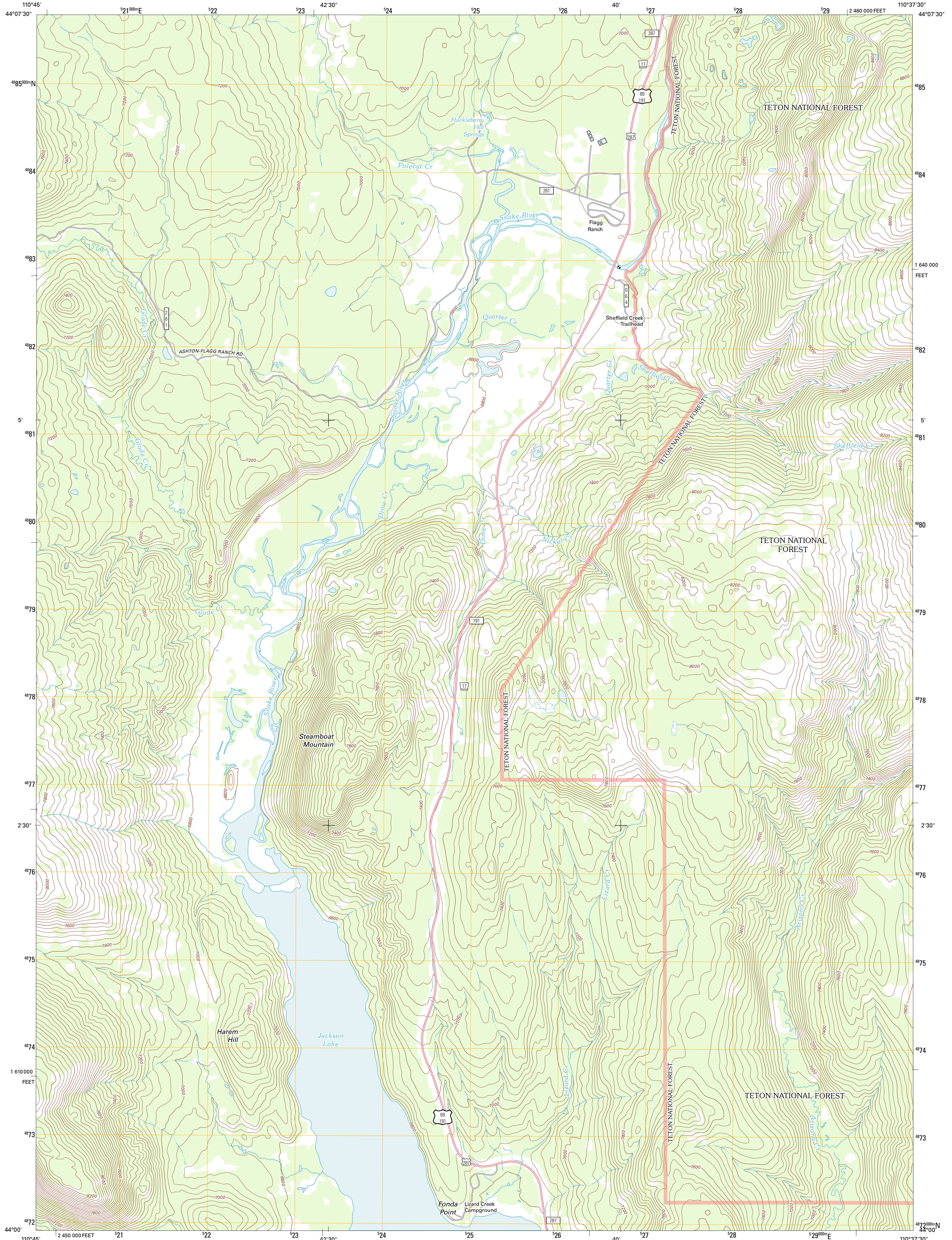




U.S. DEPARTMENT OF THE INTERIOR  
U. S. GEOLOGICAL SURVEY

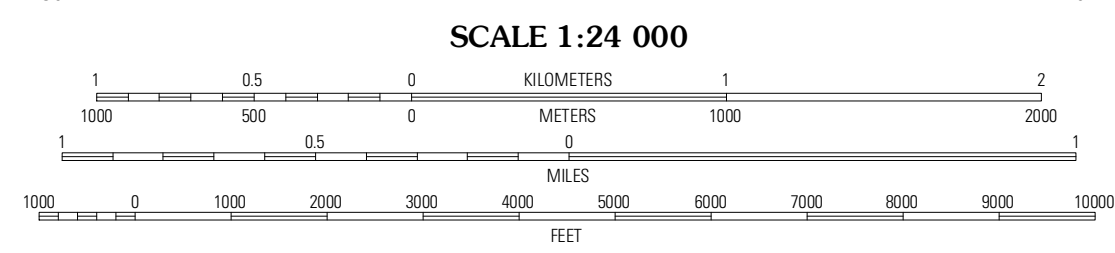
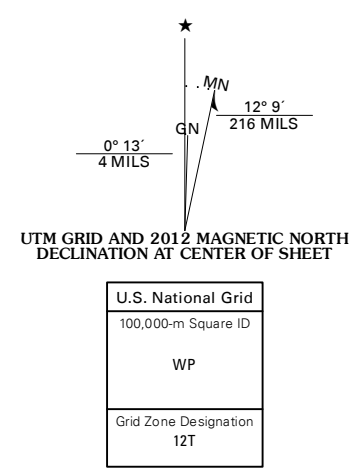


FLAGG RANCH QUADRANGLE  
WYOMING-TETON CO.  
7.5-MINUTE SERIES



Produced by the United States Geological Survey  
North American Datum of 1983 (NAD83)  
World Geodetic System of 1984 (WGS84). Projection and  
1 000-meter grid: Universal Transverse Mercator, Zone 12T  
(10 000-foot ticks: Wyoming Coordinate System of 1983  
(west zone)

Imagery.....NAP, August 2009  
Roads.....©2006-2011 TomTom  
Roads within US Forest Service Lands.....FS Topo Data  
with limited Forest Service updates, 2009  
Names.....GNIS, 2011  
Hydrography.....National Hydrography Dataset, 2009  
Contours.....National Elevation Dataset, 1999  
Boundaries.....Census, IBWC, IBC, USGS, 1972 - 2010  
Public Land Survey System.....BLM, 2006 - 2008



This map was produced to conform with the  
National Geospatial Program US Topo Product Standard, 2011.  
A metadata file associated with this product is draft version 0.6.3

WYOMING

ROAD CLASSIFICATION

Interstate Route	State Road
US Route	Local Road
Ramp	4WD
FS Primary Route	FS Route
FS Passenger Route	FS High Clearance Route

Check with local Forest Service unit  
for current travel conditions and restrictions.

FLAGG RANCH, WY  
2012

ADJOINING 7.5' QUADRANGLES

Grassy Lake Reservoir	Lewis Canyon	Snake Hot Springs
Survey Peak	Flagg Ranch	Huckleberry Mountain
Ranger Peak	Colter Bay	Two Ocean Lake