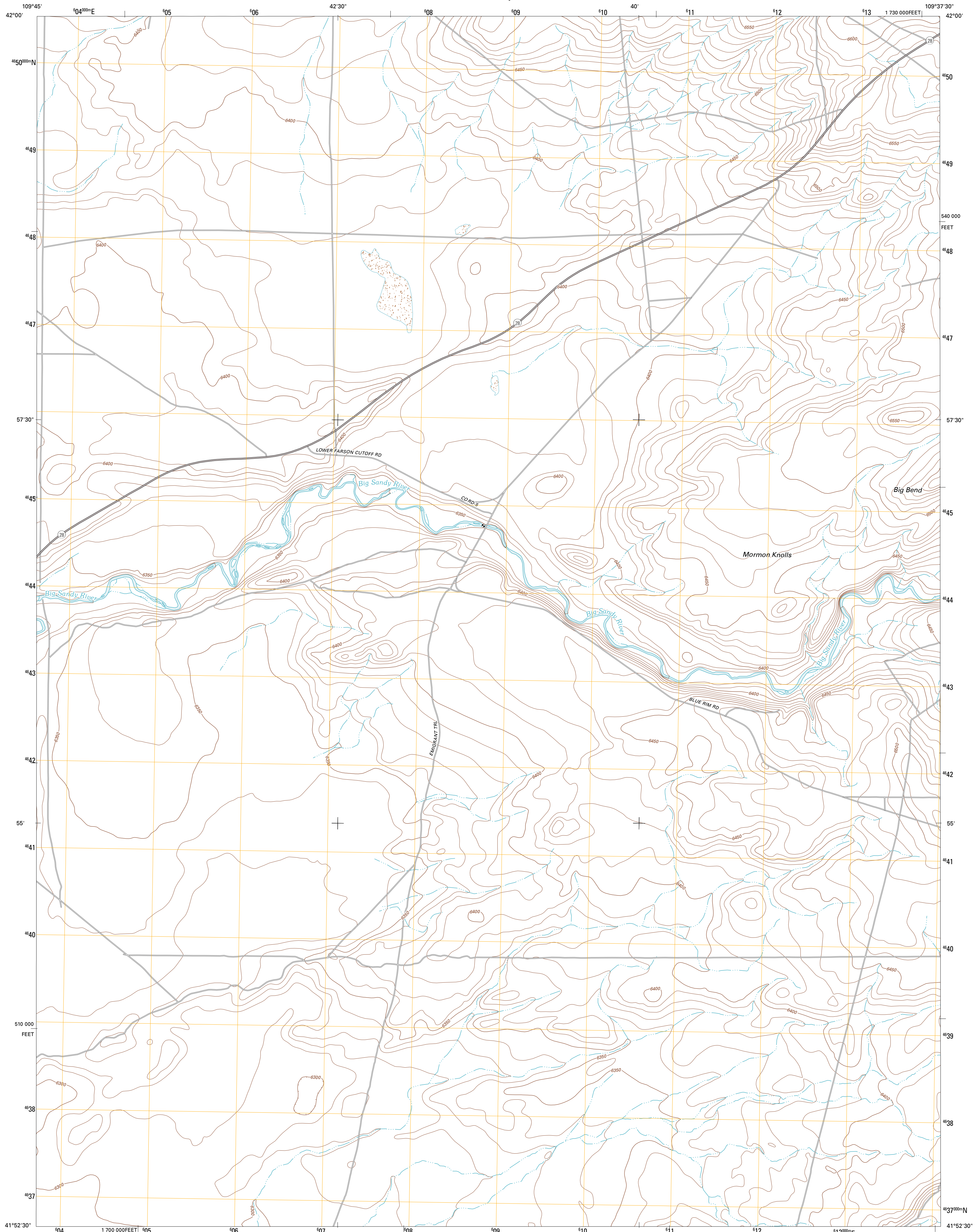




U.S. DEPARTMENT OF THE INTERIOR  
U. S. GEOLOGICAL SURVEY

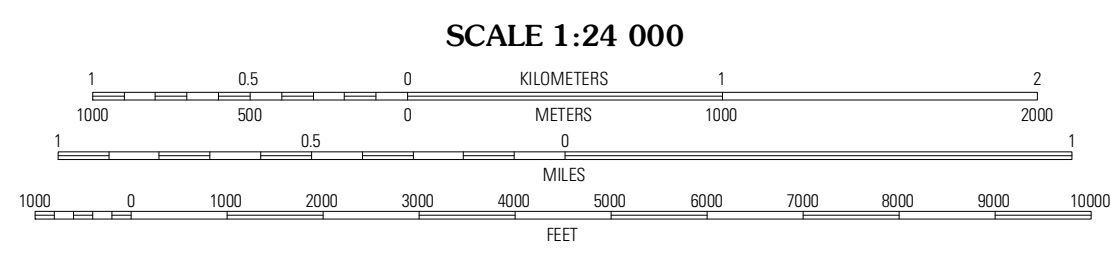
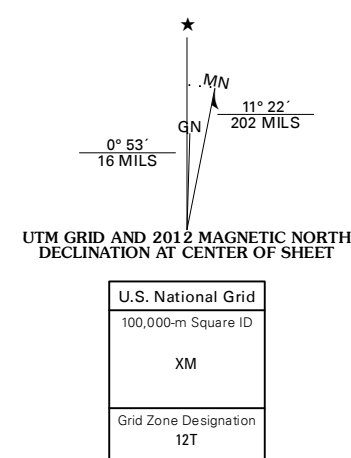


GASSON BRIDGE QUADRANGLE  
WYOMING-SWEETWATER CO.  
7.5-MINUTE SERIES

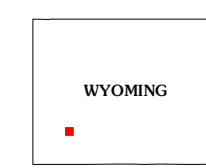


Produced by the United States Geological Survey  
North American Datum of 1983 (NAD83)  
World Geodetic System of 1984 (WGS84). Projection and  
1 000-meter grid: Universal Transverse Mercator, Zone 12T  
10 000-foot ticks: Wyoming Coordinate System of 1983  
(west central zone)

Imagery.....N.A.P., July 2009  
Roads.....©2006-2011 TomTom  
Names.....GNIS, 2011  
Hydrography.....National Hydrography Dataset, 2009  
Contours.....National Elevation Dataset, 2000  
Boundaries.....Census, IBC, I/SCS, 1972 - 2010  
Public Land Survey System.....BLM, 2006 - 2008

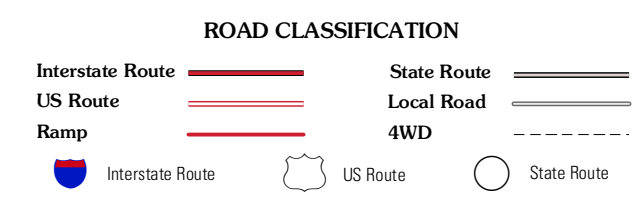


CONTOUR INTERVAL 10 FEET  
NORTH AMERICAN VERTICAL DATUM OF 1988  
This map was produced to conform with the  
National Geospatial Program US Topo Product Standard, 2011.  
A metadata file associated with this product is draft version 0.6.3



QUADRANGLE LOCATION

|                |                   |                  |
|----------------|-------------------|------------------|
| Tueheme Sink   | Simpson Gulch SW  | Simpson Gulch SE |
| Thomas School  | Gasson Bridge     | Pitman Well      |
| Lombard Buttes | Big Island Bridge | Chrman Ranch     |



GASSON BRIDGE, WY  
2012