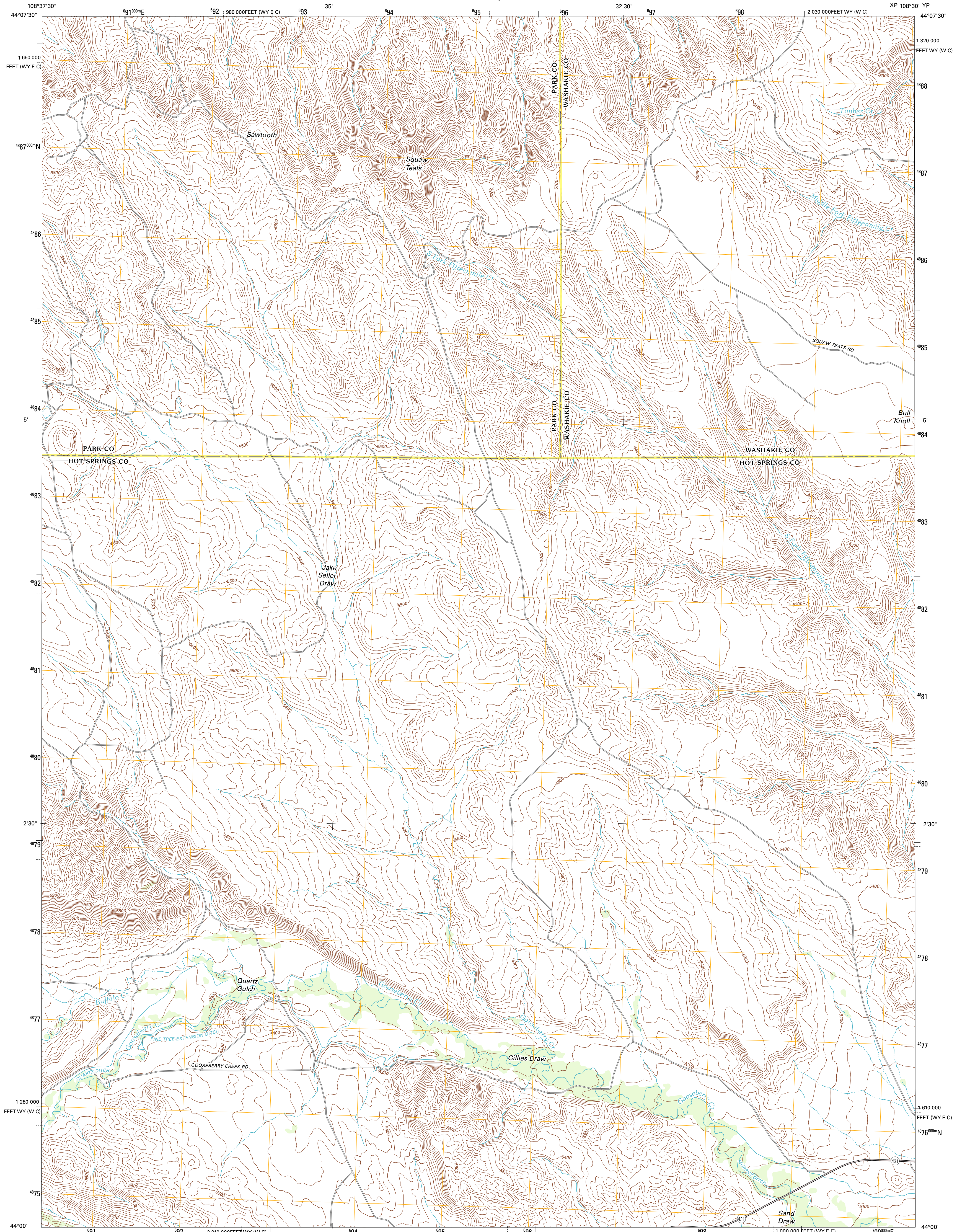




U.S. DEPARTMENT OF THE INTERIOR
U. S. GEOLOGICAL SURVEY

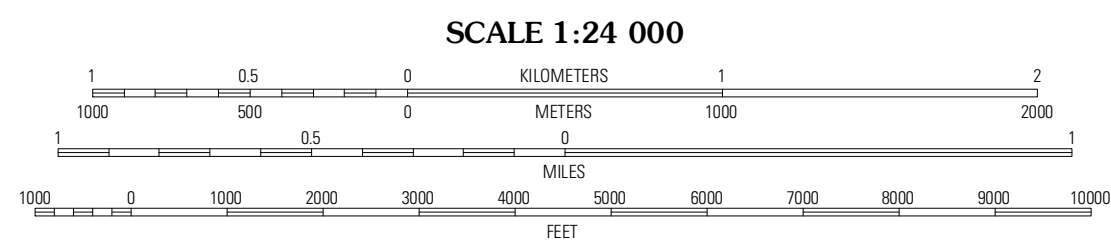
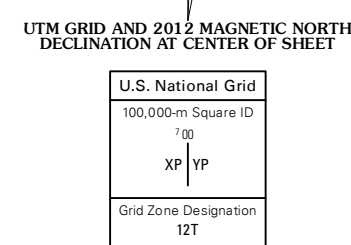


GILLIES DRAW QUADRANGLE
WYOMING
7.5-MINUTE SERIES

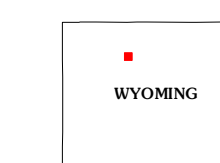


Produced by the United States Geological Survey
North American Datum of 1983 (NAD83)
World Geodetic System of 1984 (WGS84). Projection and
1 000-meter grid: Universal Transverse Mercator, Zone 12T
(10 000-foot ticks: Wyoming Coordinate System of 1983
(west central and east central zones))

Imagery.....N.A.P., July 2009 - August 2009
Roads.....©2006-2011 TomTom
Names.....©2011
Hydrography.....National Hydrography Dataset, 2009
Contours.....National Elevation Dataset, 2008
Boundaries.....Census, IBWC, IBC, USGS, 1972 - 2010
Public Land Survey System.....BLM, 2006 - 2008



CONTOUR INTERVAL 20 FEET
NORTH AMERICAN VERTICAL DATUM OF 1988
This map was produced to conform with the
National Geospatial Program US Topo Product Standard, 2011.
A metadata file associated with this product is draft version 0.6.3



QUADRANGLE LOCATION

Wilson Spring	Dead Indian Hill	Dutch Nick Flat NW
Hillberry Rim	Gillies Draw	Dutch Nick Flat SW
Grass Creek	Red Ridge	Blue Mesa West

ROAD CLASSIFICATION

Interstate Route	State Route	Local Road
US Route	Local Road	4WD
Ramp	Interstate Route	US Route
	State Route	

GILLIES DRAW, WY
2012