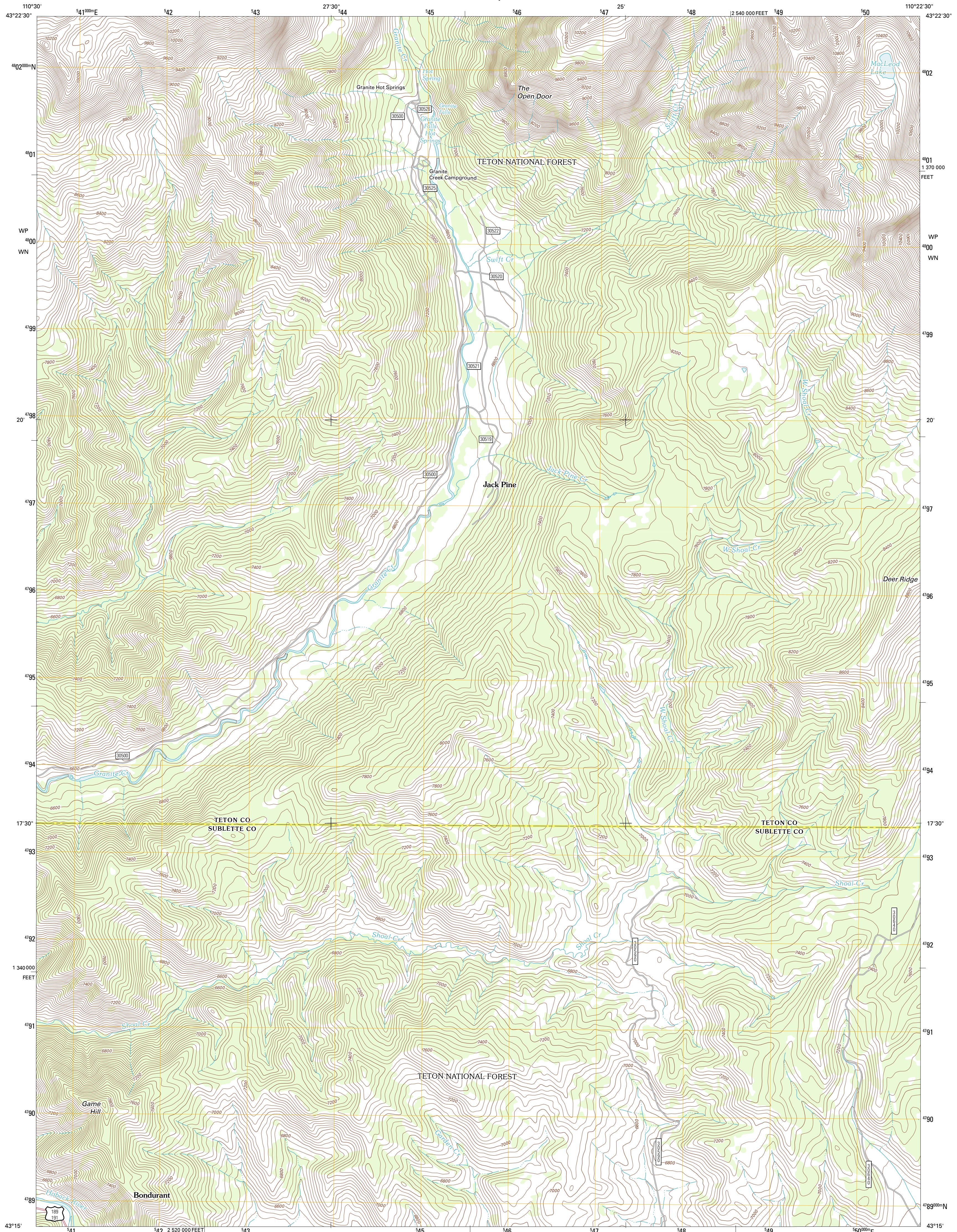




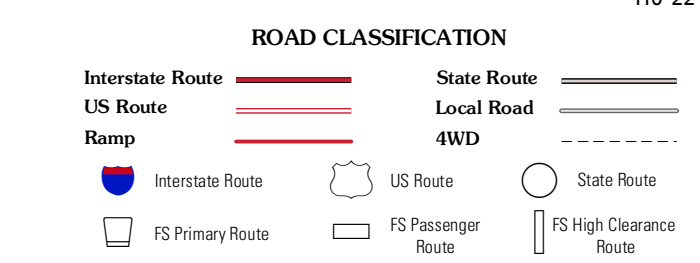
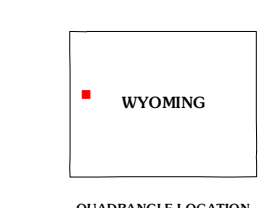
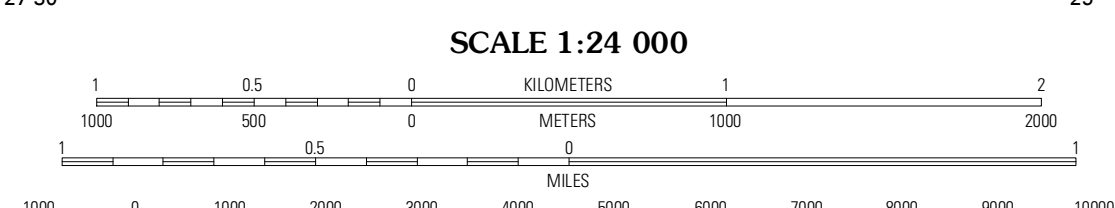
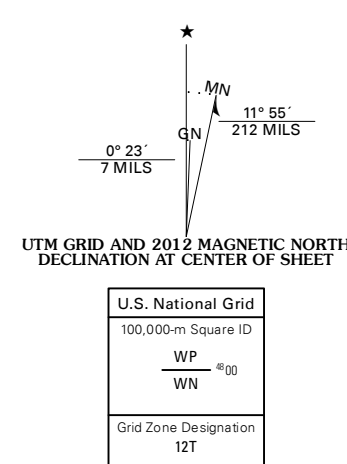
U.S. DEPARTMENT OF THE INTERIOR  
U. S. GEOLOGICAL SURVEY



GRANITE FALLS QUADRANGLE  
WYOMING  
7.5-MINUTE SERIES



Produced by the United States Geological Survey  
North American Datum of 1983 (NAD83)  
World Geodetic System of 1984 (WGS84). Projection and  
1 000-meter grid: Universal Transverse Mercator, Zone 12T  
10 000-foot ticks: Wyoming Coordinate System of 1983  
(west zone)



Imagery.....NAIP, August 2009  
Roads.....©2006-2011 TomTom  
Roads within US Forest Service Lands.....FS Topo Data  
with limited Forest Service updates, 2009  
Names.....GNIS, 2011  
Hydrography.....National Hydrography Dataset, 2009  
Contours.....National Elevation Dataset, 2000  
Boundaries.....Census, IBWC, IBC, USGS, 1972 - 2010  
Public Land Survey System.....BLM, 2006 - 2008

CONTOUR INTERVAL 40 FEET  
NORTH AMERICAN VERTICAL DATUM OF 1988

This map was produced to conform with the  
National Geospatial Program US Topo Product Standard, 2011.  
A metadata file associated with this product is draft version 0.6.3

Check with local Forest Service unit  
for current travel conditions and restrictions.

GRANITE FALLS, WY  
2012

ADJOINING 7.5 QUADRANGLES