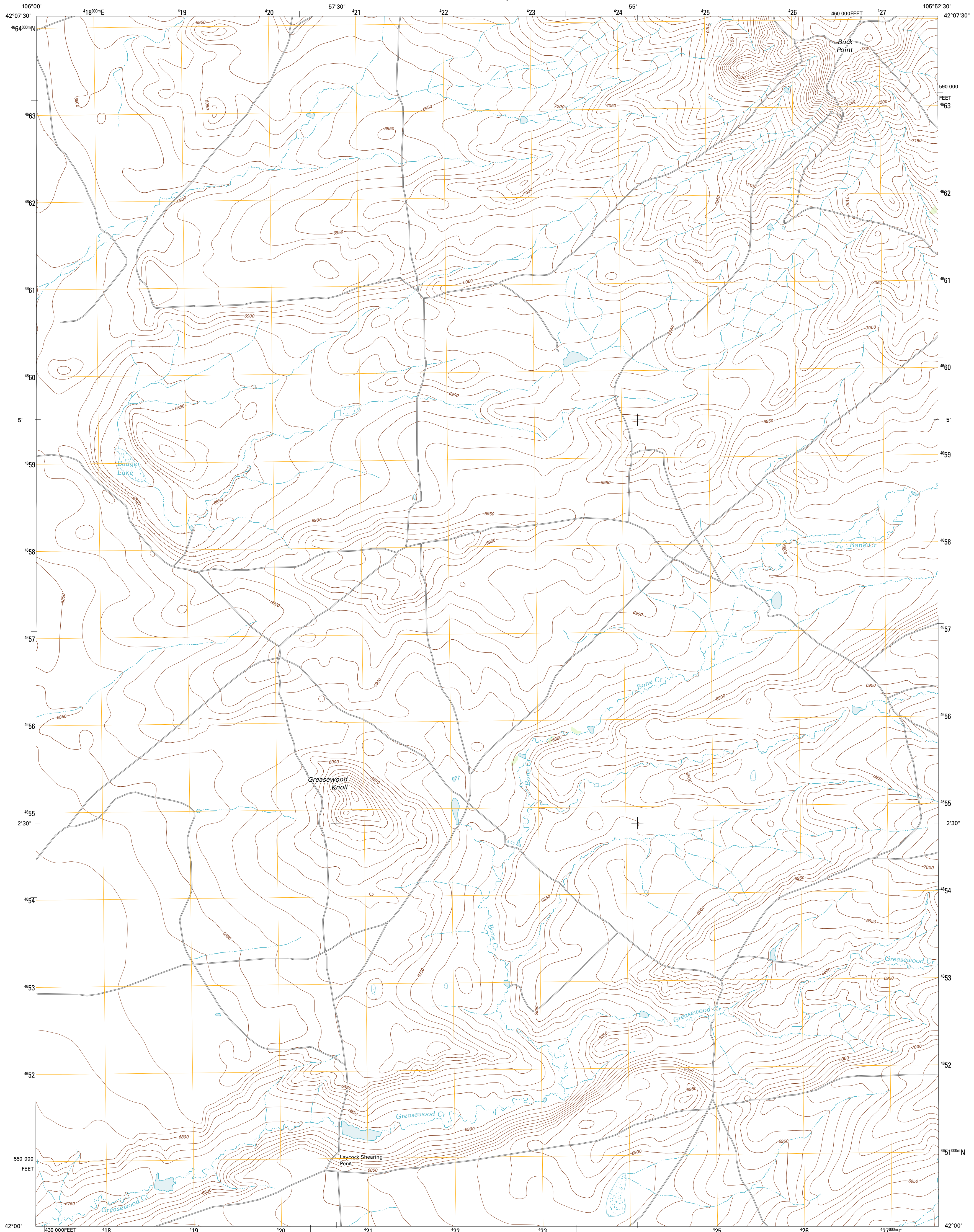




U.S. DEPARTMENT OF THE INTERIOR
U. S. GEOLOGICAL SURVEY

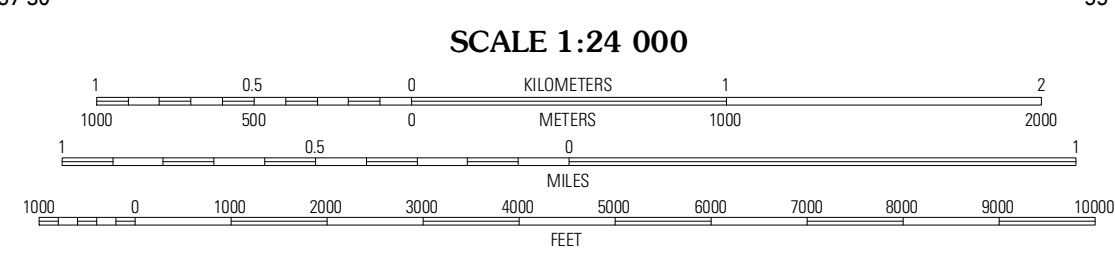
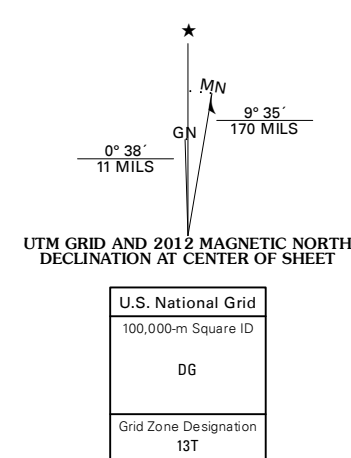


GREASEWOOD KNOLL QUADRANGLE
WYOMING-ALBANY CO.
7.5-MINUTE SERIES

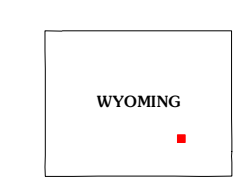


Produced by the United States Geological Survey
North American Datum of 1983 (NAD83)
World Geodetic System of 1984 (WGS84). Projection and
1 000-meter grid: Universal Transverse Mercator, Zone 13T
10 000-foot ticks: Wyoming Coordinate System of 1983 (east
zone)

Imagery.....NAIP, August 2009
Roads.....©2006-2011 TomTom
Names.....GNIS, 2011
Hydrography.....National Hydrography Dataset, 2009
Contours.....National Elevation Dataset, 2007
Boundaries.....Census, BWC, BDC, USGS, 1972 - 2010
Public Land Survey System.....BLM, 2006 - 2008



SCALE 1:24 000
CONTOUR INTERVAL 10 FEET
NORTH AMERICAN VERTICAL DATUM OF 1988
This map was produced to conform with the
National Geospatial Program US Topo Product Standard, 2011.
A metadata file associated with this product is draft version 0.6.3



QUADRANGLE LOCATION

Big Charlie Lakes	Boot Heel	Rogers Creek
Walker Draw SE	Greasewood Knoll	Boot Heel SE
Aurora Lake	Pine Tree Ridge	Severnille Spring

ROAD CLASSIFICATION

Interstate Route	State Route
US Route	Local Road
Ramp	4WD

GREASEWOOD KNOLL, WY
2012

ADJOINING 7.5' QUADRANGLES