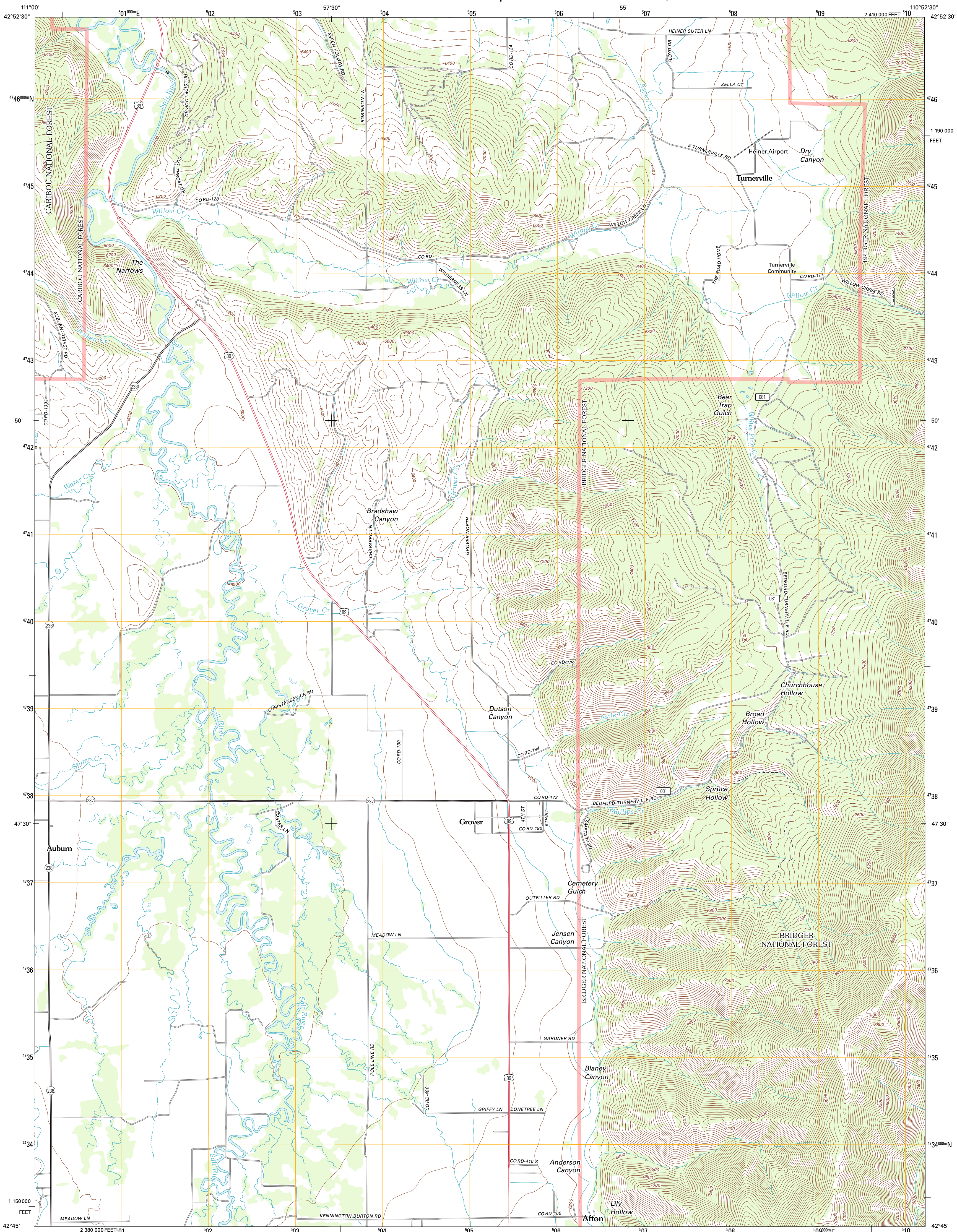




U.S. DEPARTMENT OF THE INTERIOR
U. S. GEOLOGICAL SURVEY

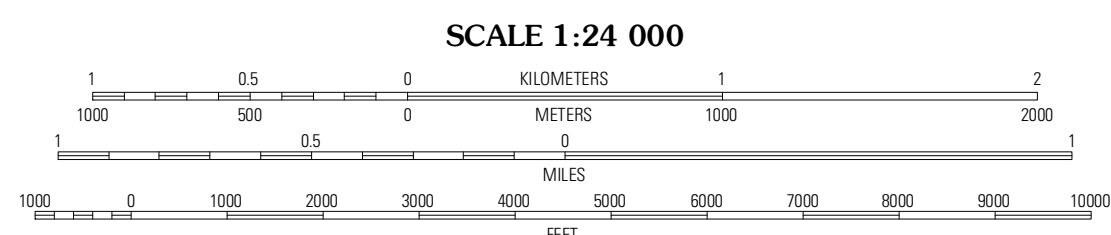
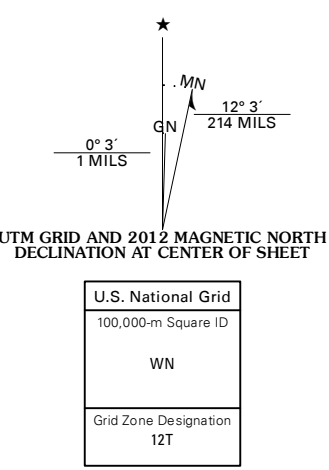


GROVER QUADRANGLE
WYOMING-LINCOLN CO.
7.5-MINUTE SERIES

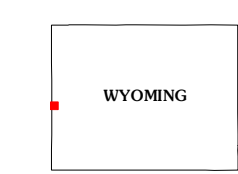


Produced by the United States Geological Survey
North American Datum of 1983 (NAD83)
World Geodetic System of 1984 (WGS84). Projection and
1 000-meter grid Universal Transverse Mercator, Zone 12T
10 000-foot ticks: Wyoming Coordinate System of 1983
(west zone)

Imagery.....N.A.P., July 2009
Roads.....©2006-2011 TomTom
Roads within US Forest Service Lands.....FS Topo Data
with limited Forest Service updates, 2009
Names.....GNIS, 2011
Hydrography.....National Hydrography Dataset, 2009
Contours.....National Elevation Dataset, 2000
Boundaries.....Census, IBWC, IBC, USGS, 1972 - 2010
Public Land Survey System.....BLM, 2006 - 2008



CONTOUR INTERVAL 40 FEET
NORTH AMERICAN VERTICAL DATUM OF 1988
This map was produced to conform with the
National Geospatial Program US Topo Product Standard, 2011.
A metadata file associated with this product is draft version 0.6.3



QUADRANGLE LOCATION

Thayne West	Thayne East	Man Peak
Auburn	Grover	Rock Lake Peak
Sage Valley	Afton	Red Top Mountain

ROAD CLASSIFICATION

Interstate Route
US Route
Ramp
Interstate Route
US Route
FS Primary Route
FS Passenger Route
FS High Clearance Route

State Route
Local Road
4WD

Check with local Forest Service unit
for current travel conditions and restrictions.

GROVER, WY
2012

ADJOINING 7.5 QUADRANGLES