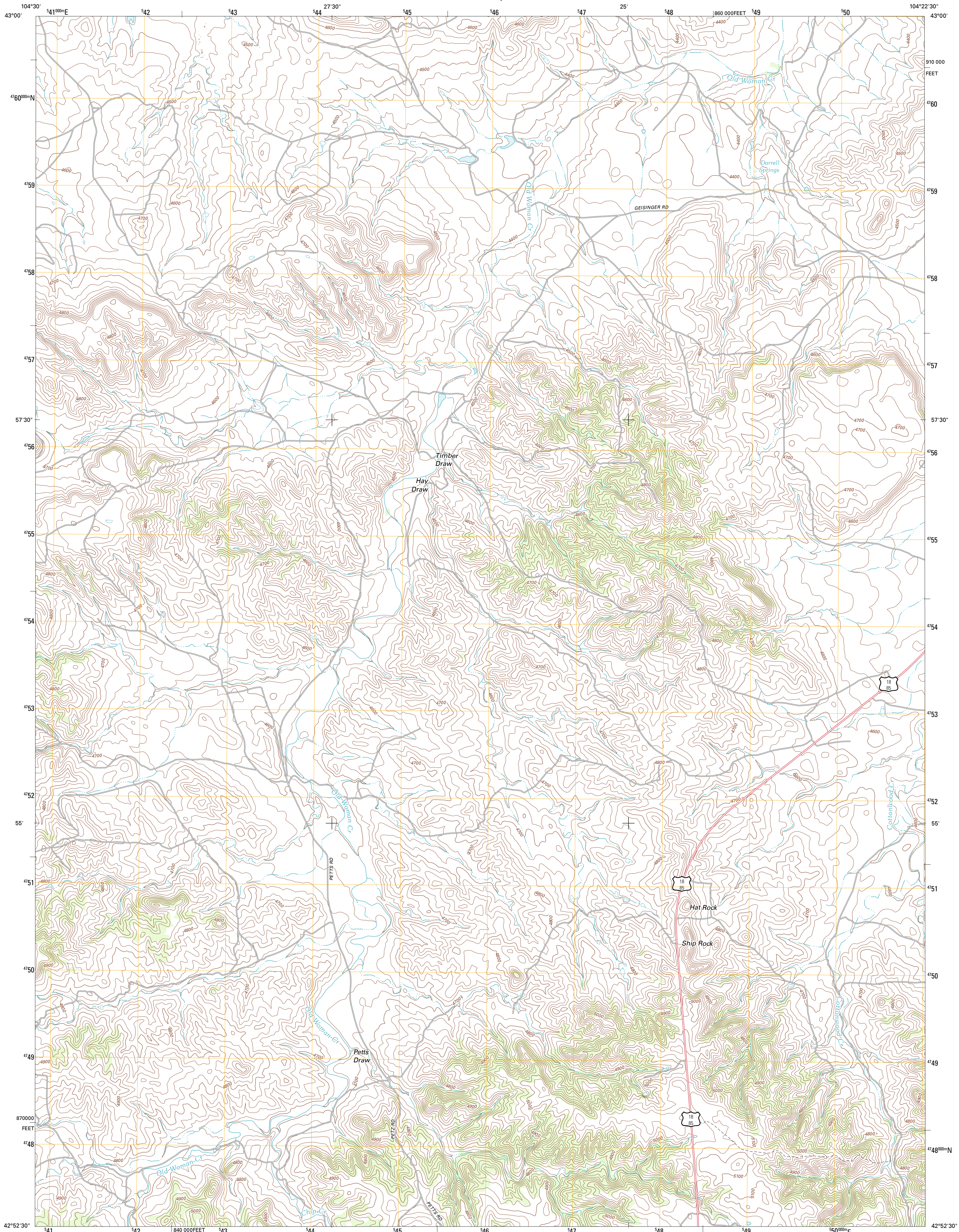




U.S. DEPARTMENT OF THE INTERIOR  
U. S. GEOLOGICAL SURVEY

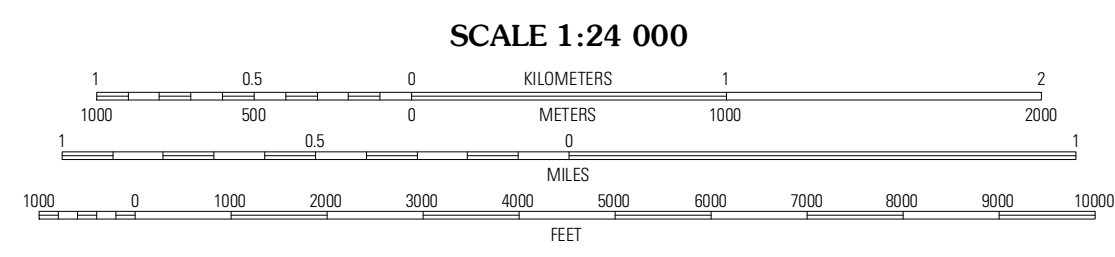
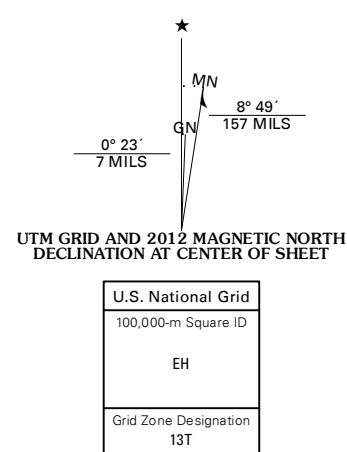


HAT ROCK QUADRANGLE  
WYOMING-NIOBRARA CO.  
7.5-MINUTE SERIES

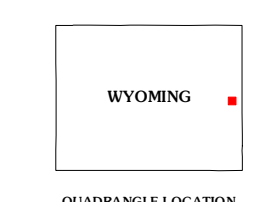


Produced by the United States Geological Survey  
North American Datum of 1983 (NAD83)  
World Geodetic System of 1984 (WGS84). Projection and  
1 000 meter grid: Universal Transverse Mercator, Zone 13T  
10 000-foot ticks: Wyoming Coordinate System of 1983 (east zone)

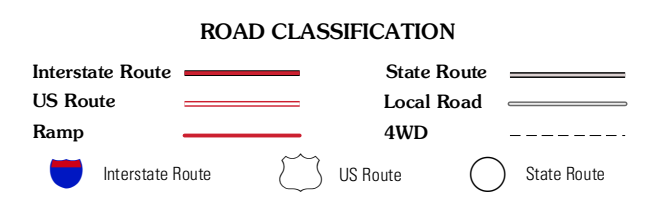
Imagery:.....NAIP, August 2009  
Roads:.....©2006-2011 TomTom  
Names:.....©2006-2011 TomTom  
Hydrography:.....National Hydrography Dataset, 2009  
Contours:.....National Elevation Dataset, 2011  
Boundaries:.....Census, IBWC, IBC, USGS, 1972 - 2010  
Public Land Survey System:.....BLM, 2006 - 2008



CONTOUR INTERVAL 20 FEET  
NORTH AMERICAN VERTICAL DATUM OF 1988  
This map was produced to conform with the  
National Geospatial Program US Topo Product Standard, 2011.  
A metadata file associated with this product is draft version 0.6.3



Rabbit Mountains	Telephone Draw	Coyote Gap
Manville NE	Hat Rock	Hat Creek
Manville	Lusk	Signature Rock



HAT ROCK, WY  
2012

ADJOINING 7.5' QUADRANGLES