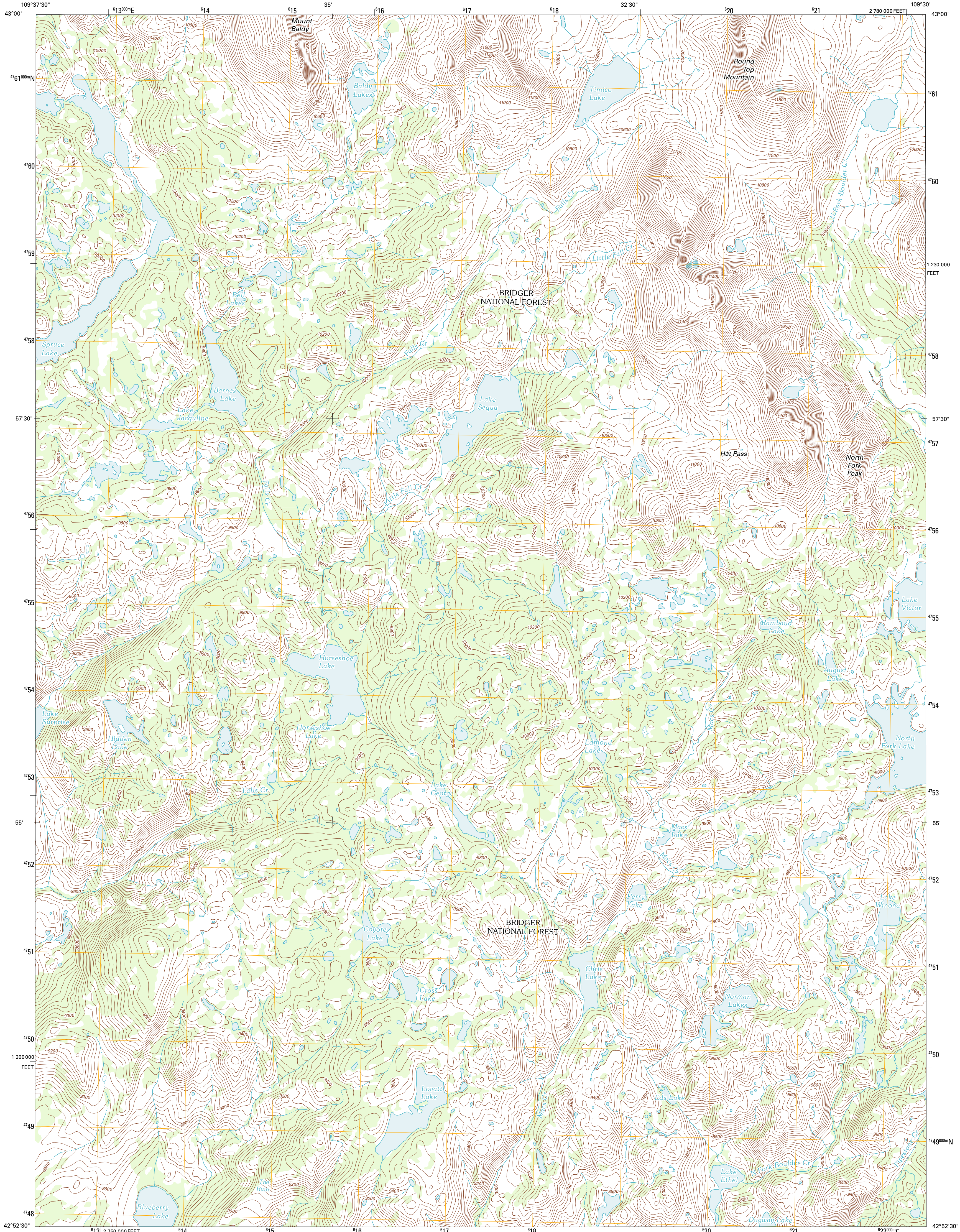




U.S. DEPARTMENT OF THE INTERIOR
U. S. GEOLOGICAL SURVEY

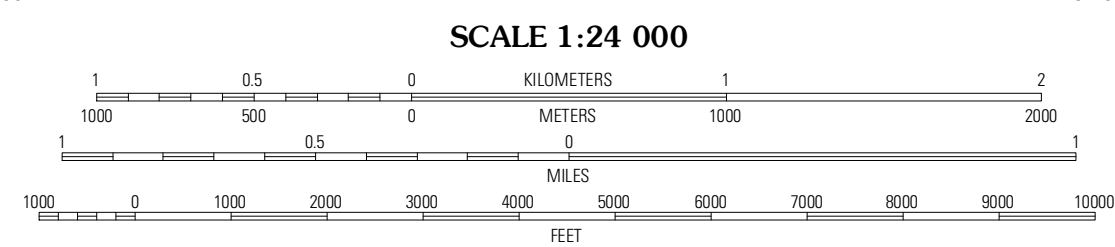
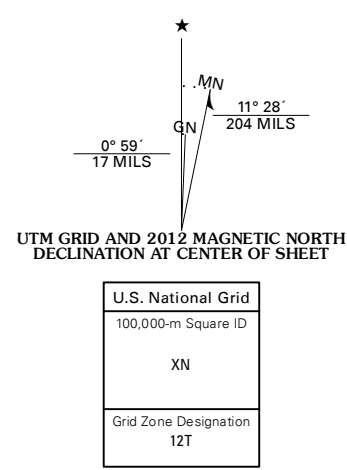


HORSESHOE LAKE QUADRANGLE
WYOMING-SUBLETTE CO.
7.5-MINUTE SERIES

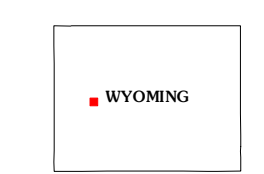


Produced by the United States Geological Survey
North American Datum of 1983 (NAD83)
World Geodetic System of 1984 (WGS84). Projection and
1 000 meter grid: Universal Transverse Mercator, Zone 12T
10 000-foot ticks: Wyoming Coordinate System of 1983
(west zone)

Imagery: NADIP, August 2009
Roads: ©2006-2011 TomTom
Roads within US Forest Service Lands with limited Forest Service updates, 2009
Names: GNIS, 2011
Hydrography: National Hydrography Dataset, 2009
Contours: National Elevation Dataset, 2000
Boundaries: Census, IBWC, IBC, USGS, 1972 - 2010
Public Land Survey System: BLM, 2006 - 2008

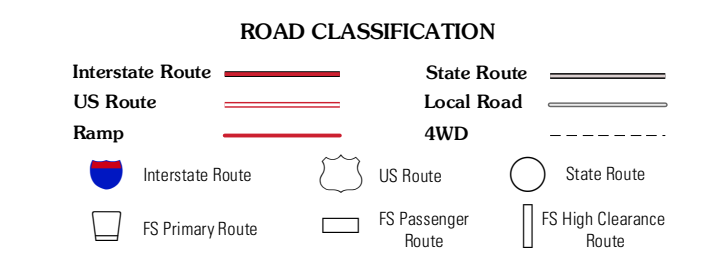


CONTOUR INTERVAL 40 FEET
NORTH AMERICAN VERTICAL DATUM OF 1988
This map was produced to conform with the
National Geospatial Program US Topo Product Standard, 2011.
A metadata file associated with this product is draft version 0.6.3



QUADRANGLE LOCATION

Bridger Lakes	Fremont Peak South	Alpine Lake
Fayette Lake	Horseshoe Lake	Halls Mountain
Boulder Lake	Scab Creek	Raid Lake



Check with local Forest Service unit for current travel conditions and restrictions.

HORSESHOE LAKE, WY
2012

ADJOINING 7.5 QUADRANGLES