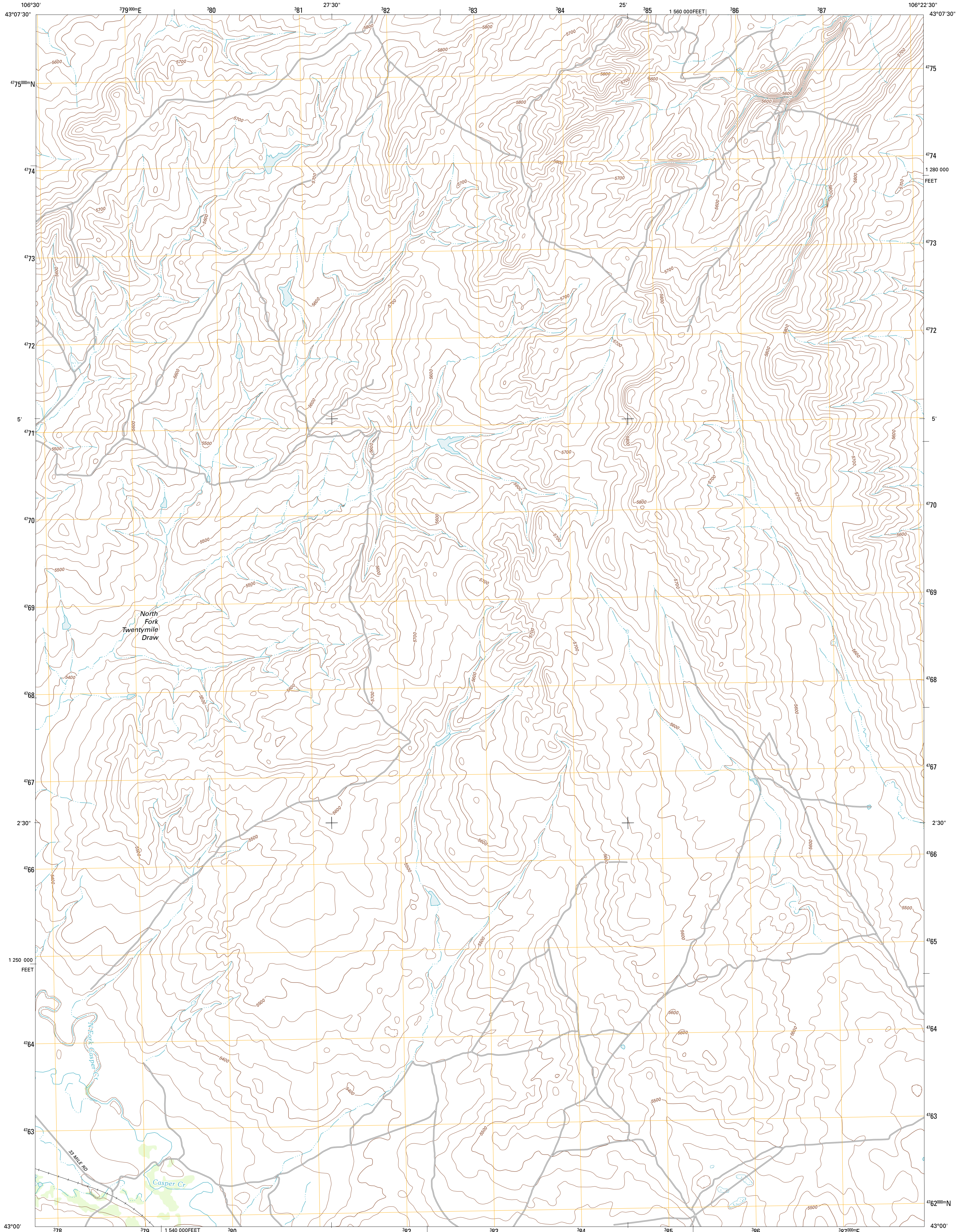




U.S. DEPARTMENT OF THE INTERIOR
U. S. GEOLOGICAL SURVEY

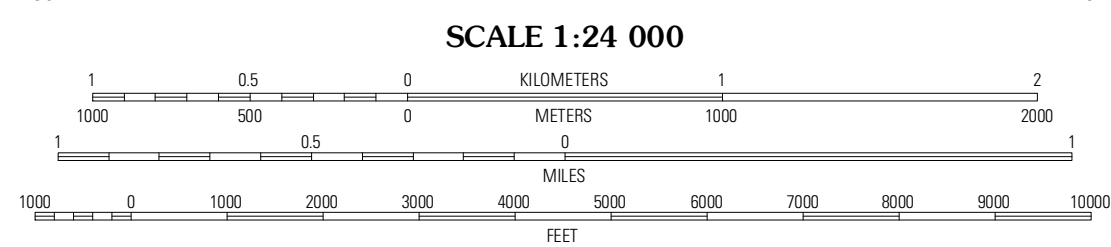
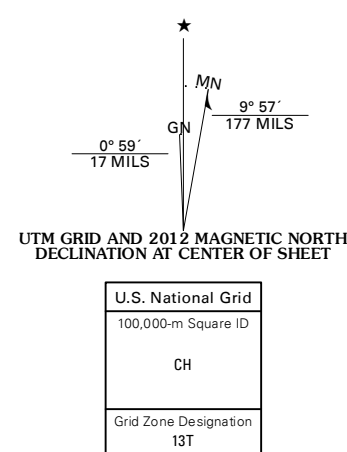


ILLCO QUADRANGLE
WYOMING-NATRONA CO.
7.5-MINUTE SERIES



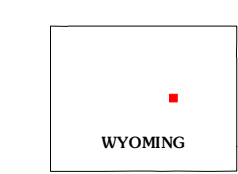
Produced by the United States Geological Survey
North American Datum of 1983 (NAD83)
World Geodetic System of 1984 (WGS84). Projection and
1 000-meter grid: Universal Transverse Mercator, Zone 13T
10 000-foot ticks: Wyoming Coordinate System of 1983 (east
central zone)

Imagery:.....NAIP, August 2009
Roads:.....©2006-2011, TomTom
Names:.....©2006-2011, TomTom
Hydrography:.....National Hydrography Dataset, 2009
Contours:.....National Elevation Dataset, 2009
Boundaries:.....Census, IBWC, IBC, USGS, 1972 - 2010
Public Land Survey System:.....BLM, 2006 - 2008



CONTOUR INTERVAL 20 FEET
NORTH AMERICAN VERTICAL DATUM OF 1988

This map was produced to conform with the
National Geospatial Program US Topo Product Standard, 2011.
A metadata file associated with this product is draft version 0.6.3



QUADRANGLE LOCATION

Merino	Stater Point	Trapet Rock
Smith Flats	Illco	McPherson Draw
Emigrant Gap NE	Bishop	The Reefs

ADJOINING 7.5 QUADRANGLES

ROAD CLASSIFICATION

Interstate Route	State Route
US Route	Local Road
Ramp	4WD

ILLCO, WY
2012