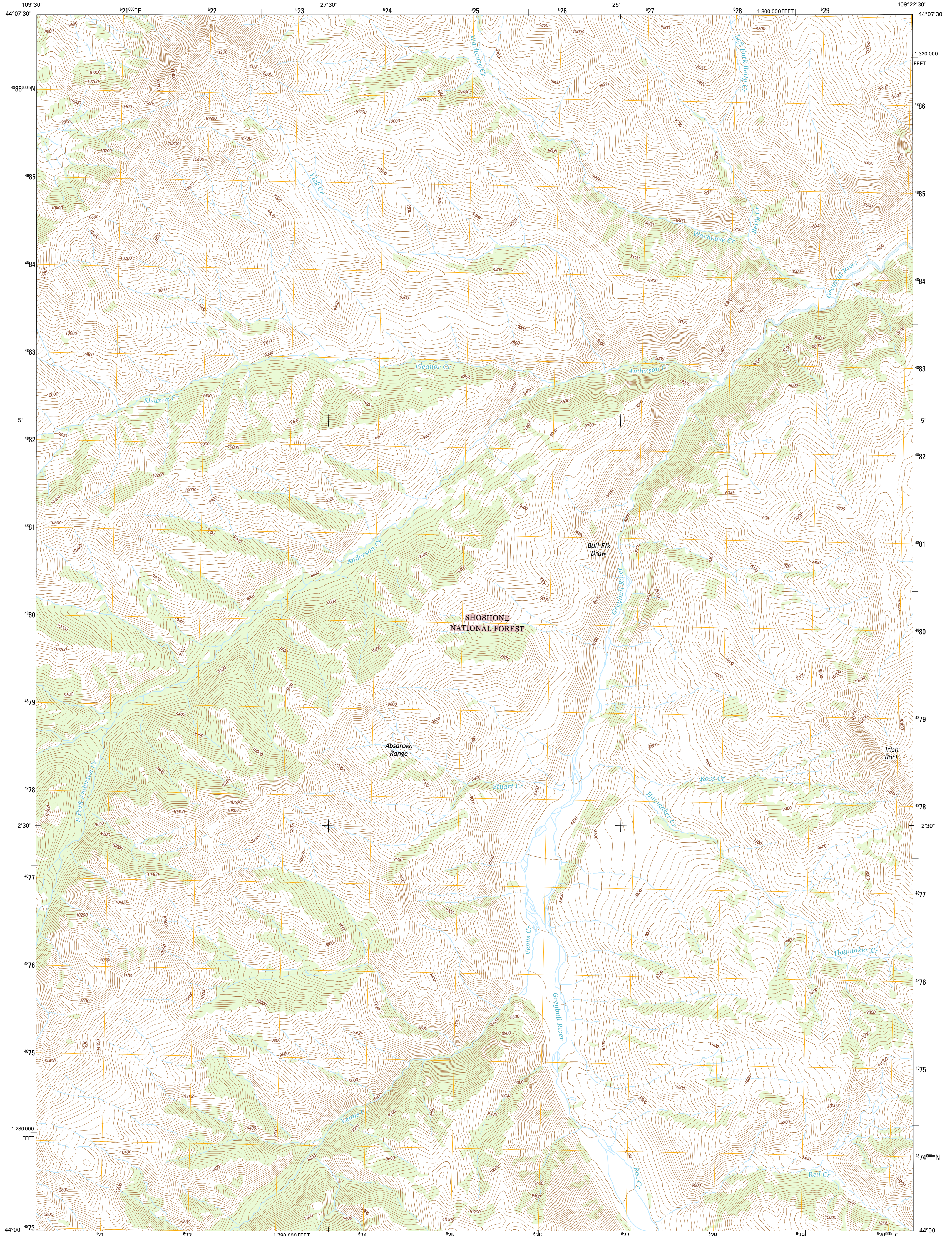




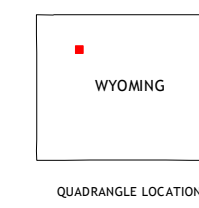
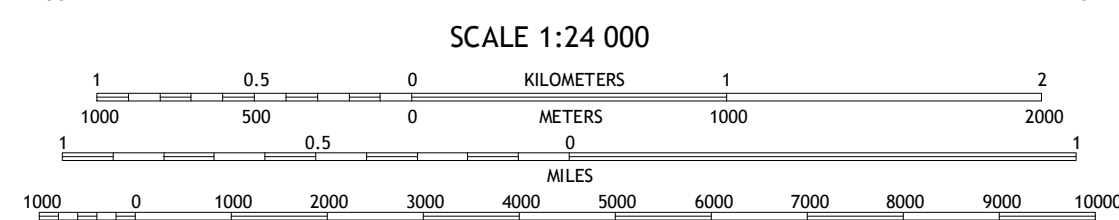
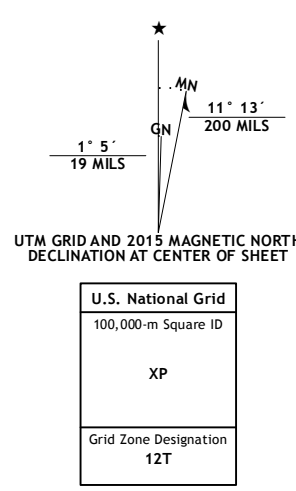
U.S. DEPARTMENT OF THE INTERIOR
U.S. GEOLOGICAL SURVEY



IRISH ROCK QUADRANGLE
WYOMING-PARK CO.
7.5-MINUTE SERIES



Produced by the United States Geological Survey
North American Datum of 1983 (NAD83)
World Geodetic System of 1984 (WGS84). Projection and
1 000-meter grid: Universal Transverse Mercator, Zone 12T
10 000-foot ticks: Wyoming Coordinate System of 1983 (west
central zone)
This map is not a legal document. Boundaries may be
generalized for this map scale. Private lands within government
reservations may not be shown. Obtain permission before
entering private lands.
Imagery:N.A.P., July 2012
Roads:HERE, ©2013 - 2014
Roads within US Forest Service Lands:FS/Topo Data
with limited Forest Service updates, 2012 - 2015
Names:G.N.S., 2015
Hydrography:National Hydrography Dataset, 2012
Contours:National Elevation Dataset, 2000
Boundaries:Multiple sources; see metadata file 1972 - 2015
Public Land Survey System:B.L.M., 2011



CONTOUR INTERVAL 40 FEET
NORTH AMERICAN VERTICAL DATUM OF 1988

This map was produced to conform with the
National Geospatial Program US Topo Product Standard, 2011.
A metadata file associated with this product is draft version 0.6.18

1	2	3
4	5	6
7	8	

ADJOINING QUADRANGLES

ROAD CLASSIFICATION	
Expressway	Local Connector
Secondary Hwy	Local Road
Ramp	4WD
Interstate Route	US Route
FS Primary Route	FS Passenger Route
	State Route
	FS High Clearance Route

Check with local Forest Service unit for current travel conditions and restrictions.

IRISH ROCK, WY
2015

