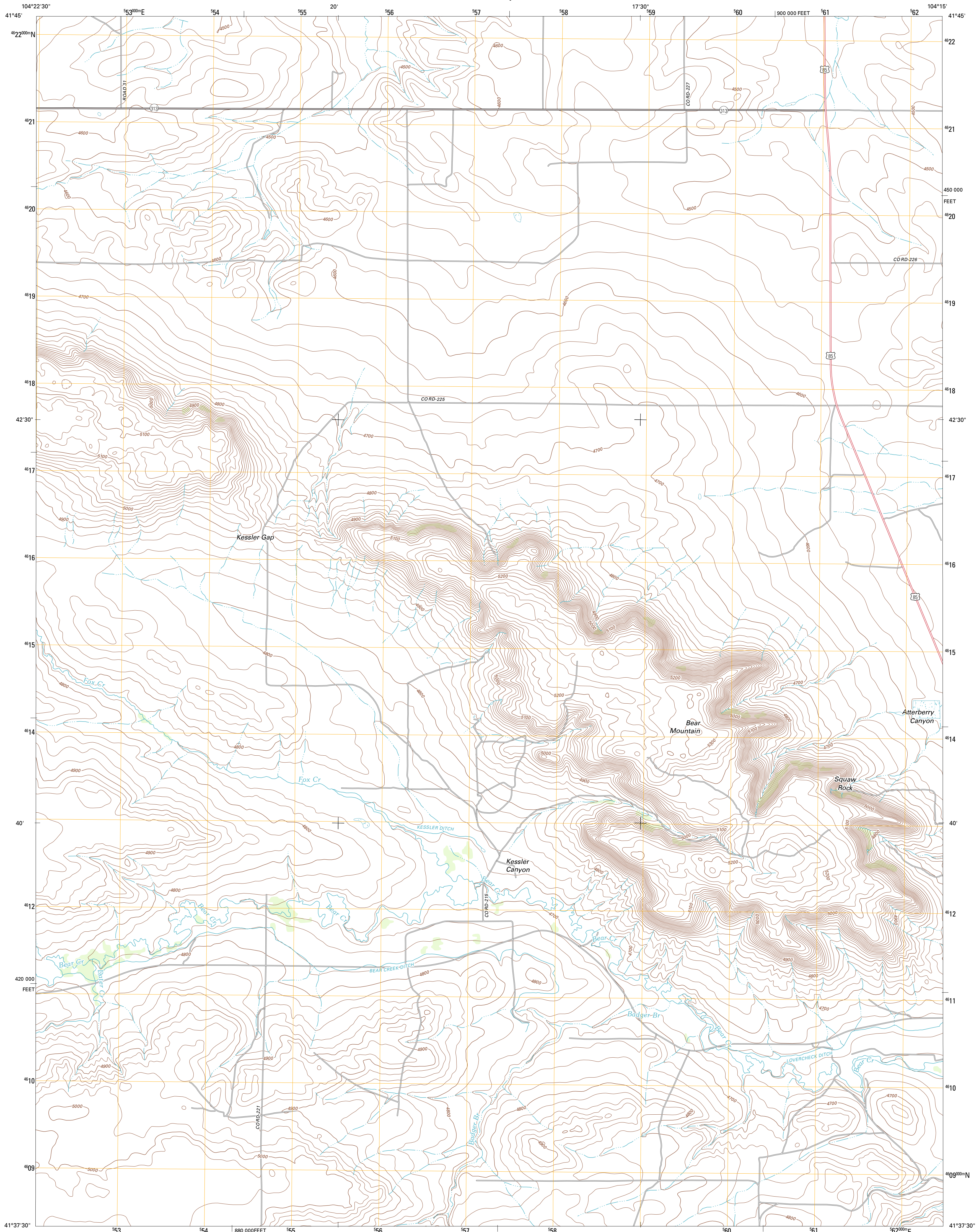




U.S. DEPARTMENT OF THE INTERIOR
U. S. GEOLOGICAL SURVEY

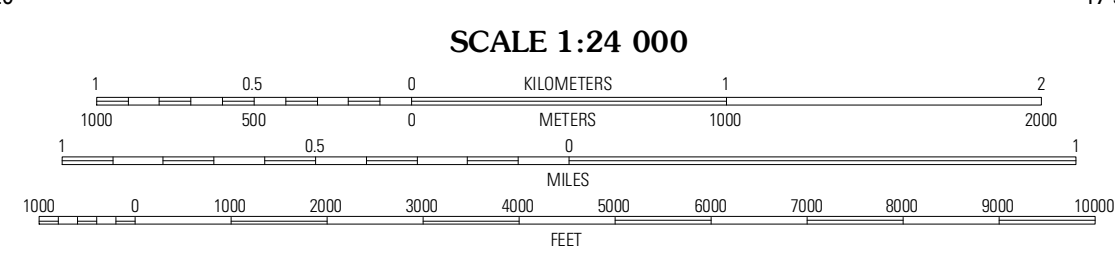
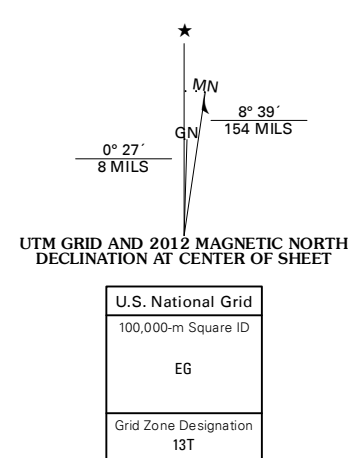


KESSLER GAP QUADRANGLE
WYOMING-GOSHEN CO.
7.5-MINUTE SERIES



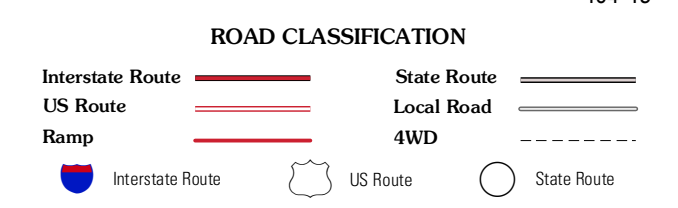
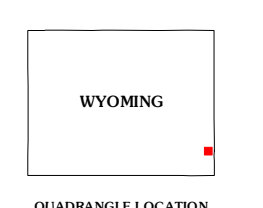
Produced by the United States Geological Survey
North American Datum of 1983 (NAD83)
World Geodetic System of 1984 (WGS84). Projection and
1 000 meter grid: Universal Transverse Mercator, Zone 13T
10 000-foot ticks: Wyoming Coordinate System of 1983 (east zone)

Imagery: NAIP, August 2009
Roads: ©2006-2011 TomTom
Names: ©2006-2011 GNS, 2011
Hydrography: National Hydrography Dataset, 2009
Contours: National Elevation Dataset, 2008
Boundaries: Census, IBVC, IBC, USGS, 1972 - 2010
Public Land Survey System: BLM, 2006 - 2008



CONTOUR INTERVAL 20 FEET
NORTH AMERICAN VERTICAL DATUM OF 1988

This map was produced to conform with the National Geospatial Program US Topo Product Standard, 2011. A metadata file associated with this product is draft version 0.6.3



QUADRANGLE LOCATION

Needle Rock	Hawk Springs	Duroc
Diamond Flat	Kessler Gap	La Grange
Rocky Hollow	Mertles	Petsch Reservoir

ADJOINING 7.5' QUADRANGLES

KESSLER GAP, WY
2012