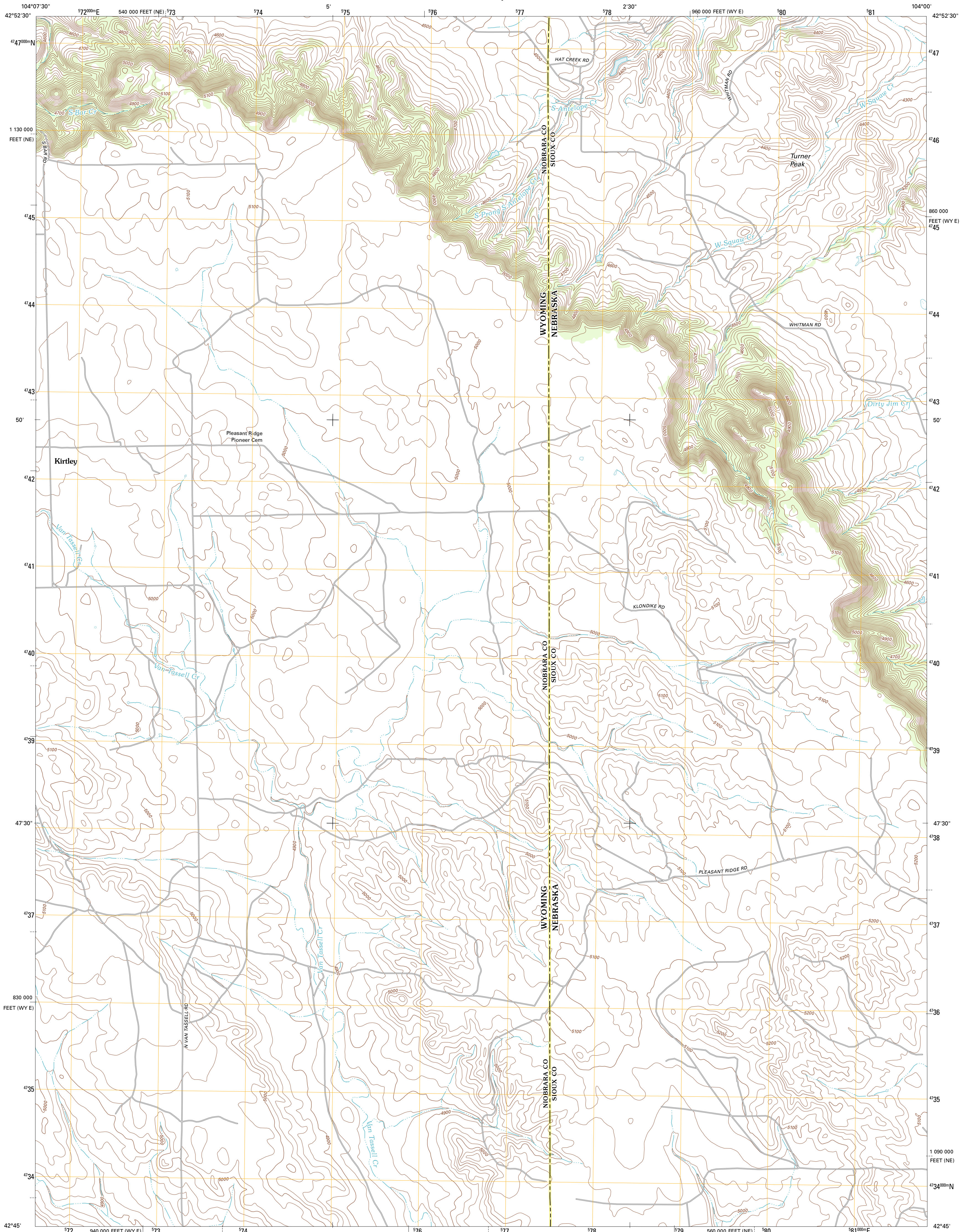




U.S. DEPARTMENT OF THE INTERIOR  
U. S. GEOLOGICAL SURVEY

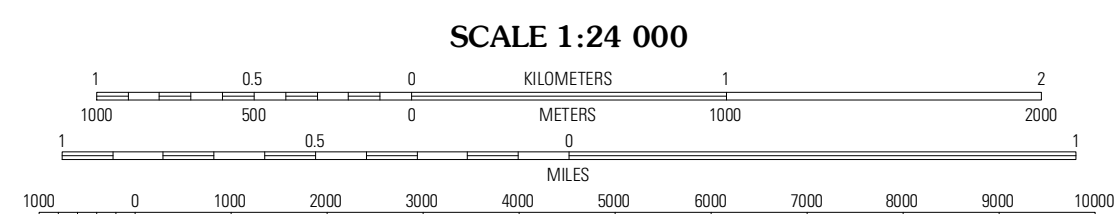
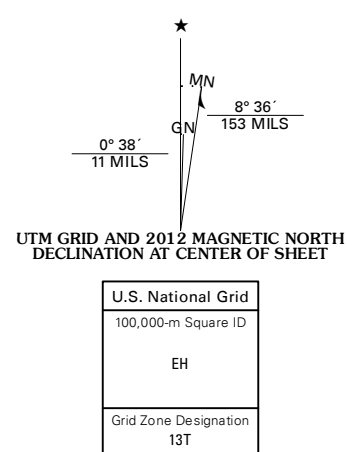


KIRTLEY QUADRANGLE  
WYOMING-NEBRASKA  
7.5-MINUTE SERIES

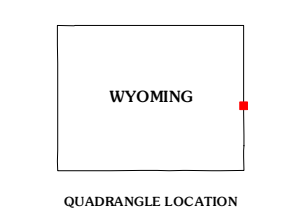


Produced by the United States Geological Survey  
North American Datum of 1983 (NAD83)  
World Geodetic System of 1984 (WGS84). Projection and  
1 000-meter grid: Universal Transverse Mercator, Zone 13T  
10 000-foot ticks: Wyoming Coordinate System of 1983 (east  
zone), Nebraska Coordinate System of 1983

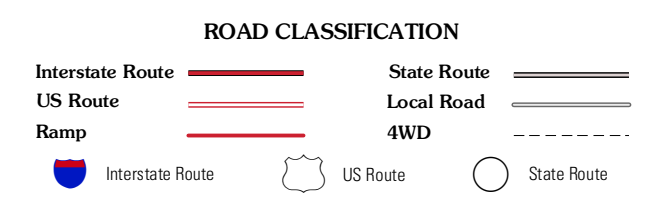
Imagery.....NAP, August 2009  
Roads.....©2006-2011, TomTom  
Names.....GNS, 2011  
Hydrography.....National Hydrography Dataset, 2009  
Contours.....National Elevation Dataset, 2002  
Boundaries.....Census, IBWC, IBC, USGS, 1972 - 2010  
Public Land Survey System.....BLM, 2006 - 2008



CONTOUR INTERVAL 20 FEET  
NORTH AMERICAN VERTICAL DATUM OF 1988  
This map was produced to conform with the  
National Geospatial Program US Topo Product Standard, 2011.  
A metadata file associated with this product is draft version 0.6.3



Shepherd's Point	Sherrill Hills	Story
Kirtley SW	Kirtley	Warbonnet Ranch
McMaster Reservoir	Van Tassel	Harrison West



KIRTLEY, WY-NE  
2012

ADJOINING 7.5' QUADRANGLES