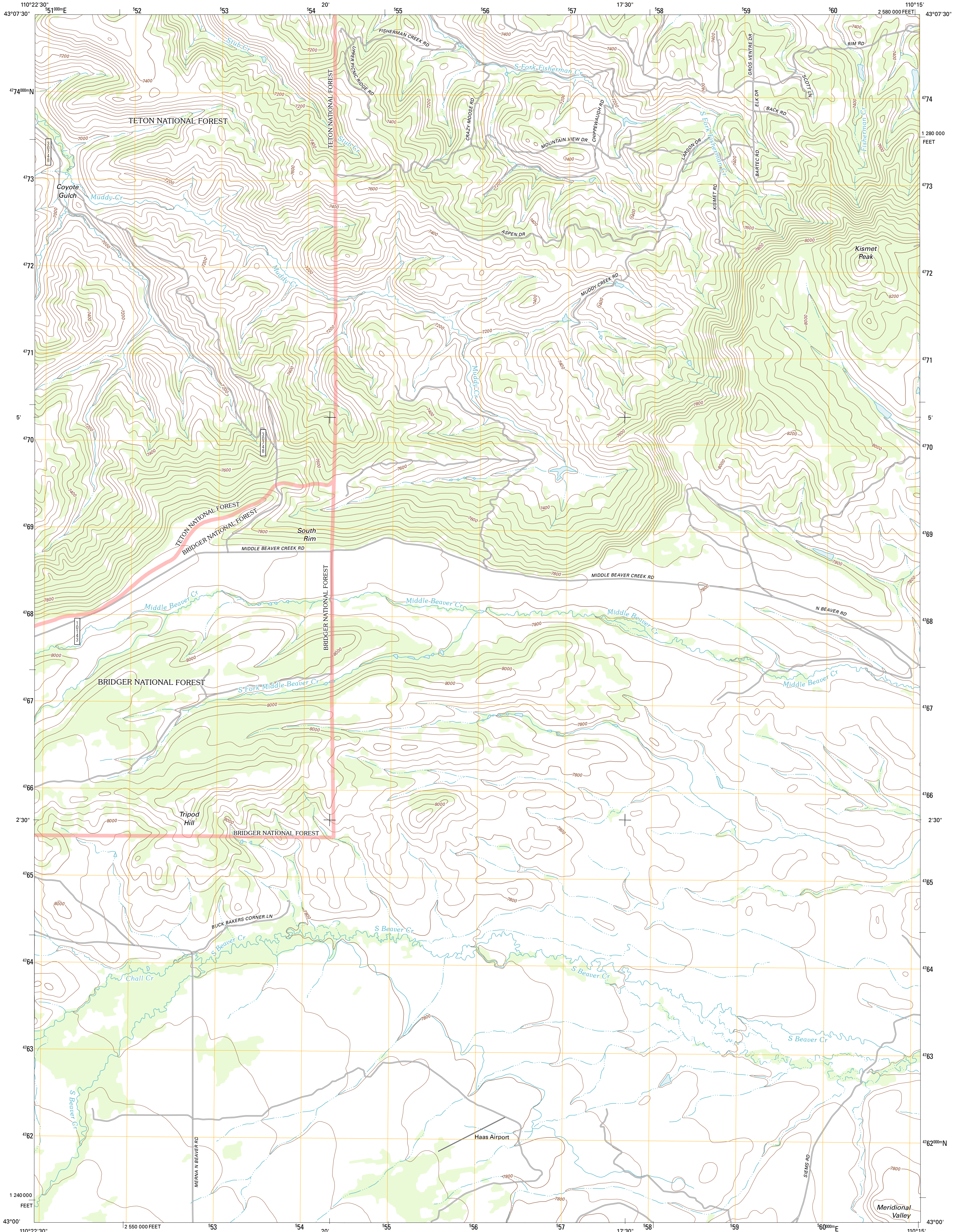




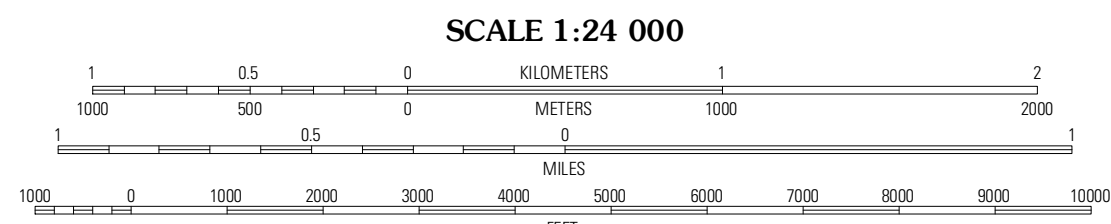
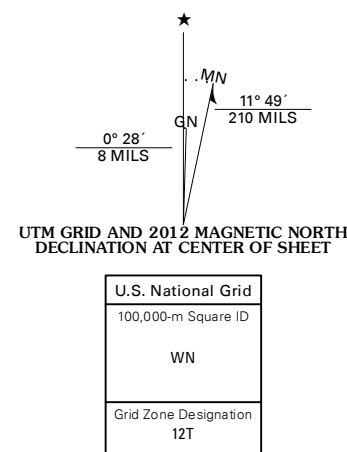
U.S. DEPARTMENT OF THE INTERIOR
U. S. GEOLOGICAL SURVEY



KISMET PEAK QUADRANGLE
WYOMING-SUBLETTE CO.
7.5-MINUTE SERIES



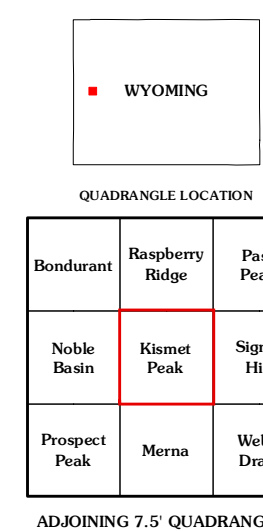
Produced by the United States Geological Survey
North American Datum of 1983 (NAD83)
World Geodetic System of 1984 (WGS84). Projection and
1 000-meter grid: Universal Transverse Mercator, Zone 12T
10 000-foot ticks: Wyoming Coordinate System of 1983
(west zone)



CONTOUR INTERVAL 40 FEET
NORTH AMERICAN VERTICAL DATUM OF 1988

This map was produced to conform with the
National Geospatial Program US Topo Product Standard, 2011.
A metadata file associated with this product is draft version 0.6.3

Imagery.....NAIP, July 2009
Roads.....©2006-2011 TomTom
Roads within US Forest Service Lands.....FS Topo Data
with limited Forest Service updates, 2009
Names.....GNIS, 2011
Hydrography.....National Hydrography Dataset, 2009
Contours.....National Elevation Dataset, 2000
Boundaries.....Census, IBWC, IBC, USGS, 1972 - 2010
Public Land Survey System.....BLM, 2006 - 2008



ROAD CLASSIFICATION
Interstate Route
US Route
Ramp
FS Primary Route
FS Passenger Route
State Route
Local Road
4WD
State Route
State Route with High Clearance

Check with local Forest Service unit
for current travel conditions and restrictions.

KISMET PEAK, WY
2012

QUADRANGLE LOCATION

Bondurant	Raspberry Ridge	Peak Peak
Noble Basin	Kismet Peak	Signal Hill
Prospect Peak	Merna	Webb Draw

ADJOINING 7.5 QUADRANGLES