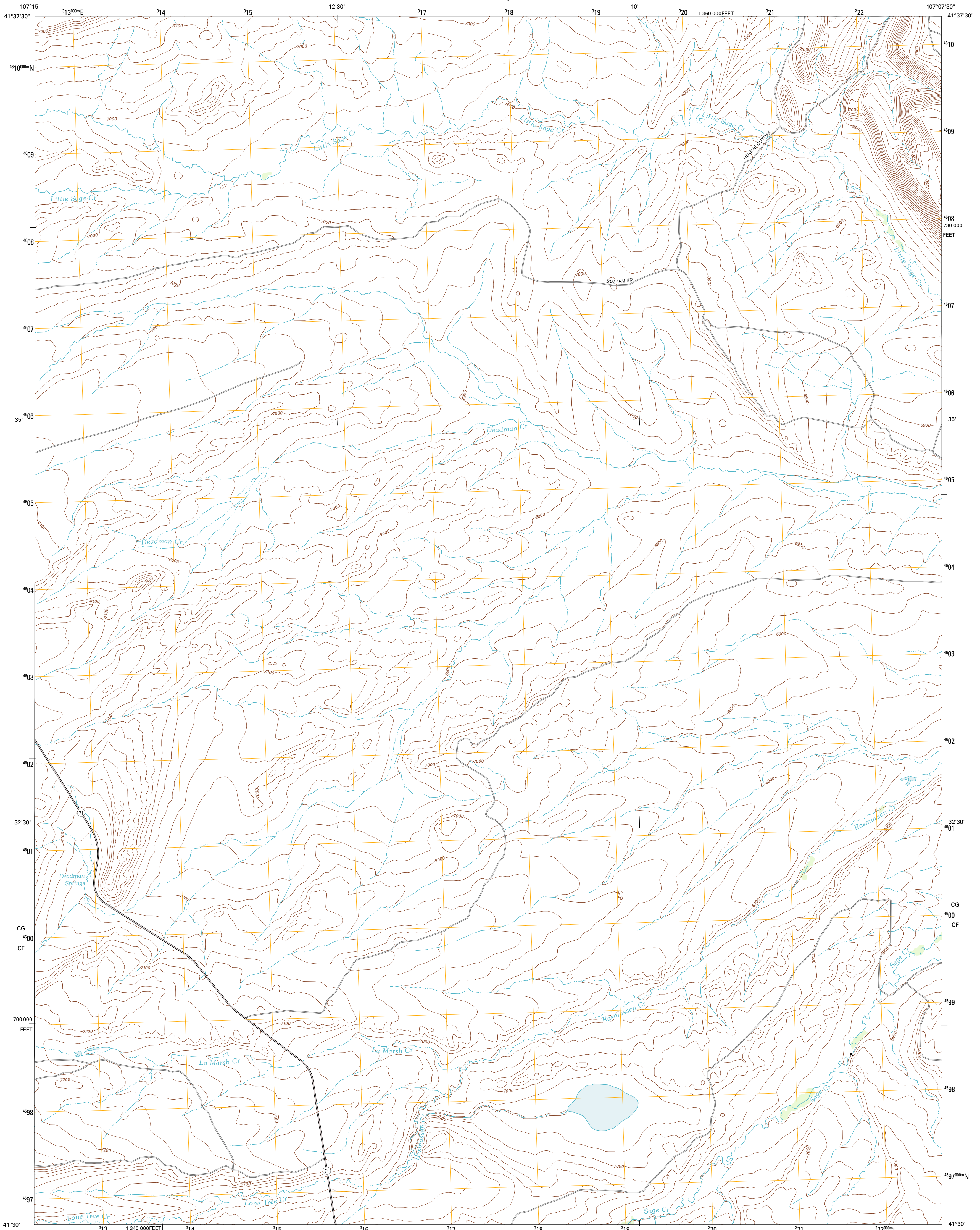




U.S. DEPARTMENT OF THE INTERIOR
U. S. GEOLOGICAL SURVEY

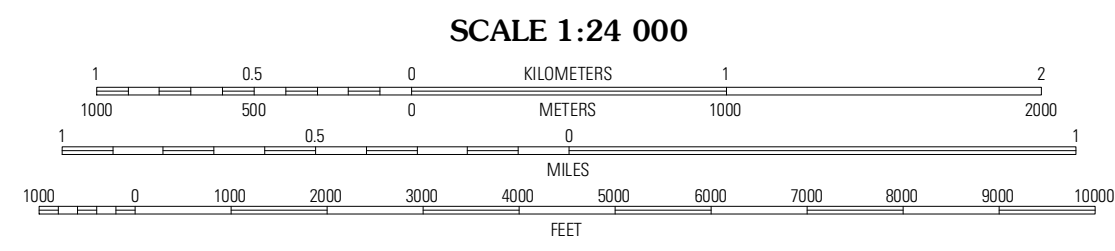
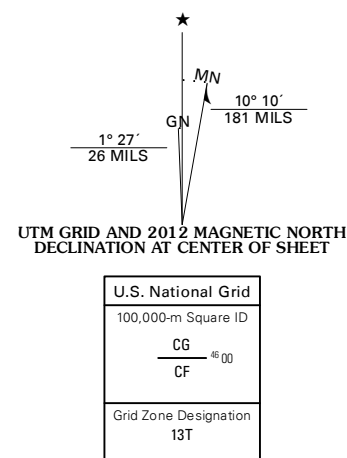


LA MARSH CREEK EAST QUADRANGLE
WYOMING-CARBON CO.
7.5-MINUTE SERIES

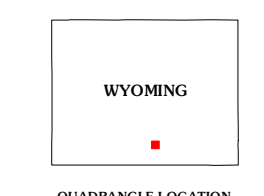


Produced by the United States Geological Survey
North American Datum of 1983 (NAD83)
World Geodetic System of 1984 (WGS84). Projection and
1 000-meter grid: Universal Transverse Mercator, Zone 13T
10 000-foot ticks: Wyoming Coordinate System of 1983 (east
central zone)

Imagery.....©2006-2011 TomTom
Roads.....©2006-2011 TomTom
Names.....©2006-2011 TomTom
Hydrography.....National Hydrography Dataset, 2009
Contours.....National Elevation Dataset, 2008
Boundaries.....Census, IBWC, IBC, USGS, 1972 - 2010
Public Land Survey System.....BLM, 2006 - 2008



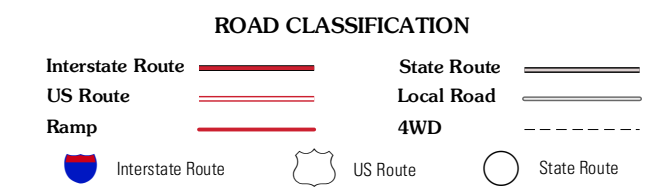
SCALE 1:24 000
CONTOUR INTERVAL 20 FEET
NORTH AMERICAN VERTICAL DATUM OF 1988
This map was produced to conform with the
National Geospatial Program US Topo Product Standard, 2011.
A metadata file associated with this product is draft version 0.6.3



QUADRANGLE LOCATION

| | | |
|---------------------|---------------------|----------------------|
| Coal Mine Ridge | Smith Draw West | Smith Draw East |
| La Marsh Creek West | La Marsh Creek East | Kindt Reservoir |
| Pine Grove Ranch | Middlewood Hill | Jack Creek Reservoir |

ADJOINING 7.5' QUADRANGLES



LA MARSH CREEK EAST, WY
2012