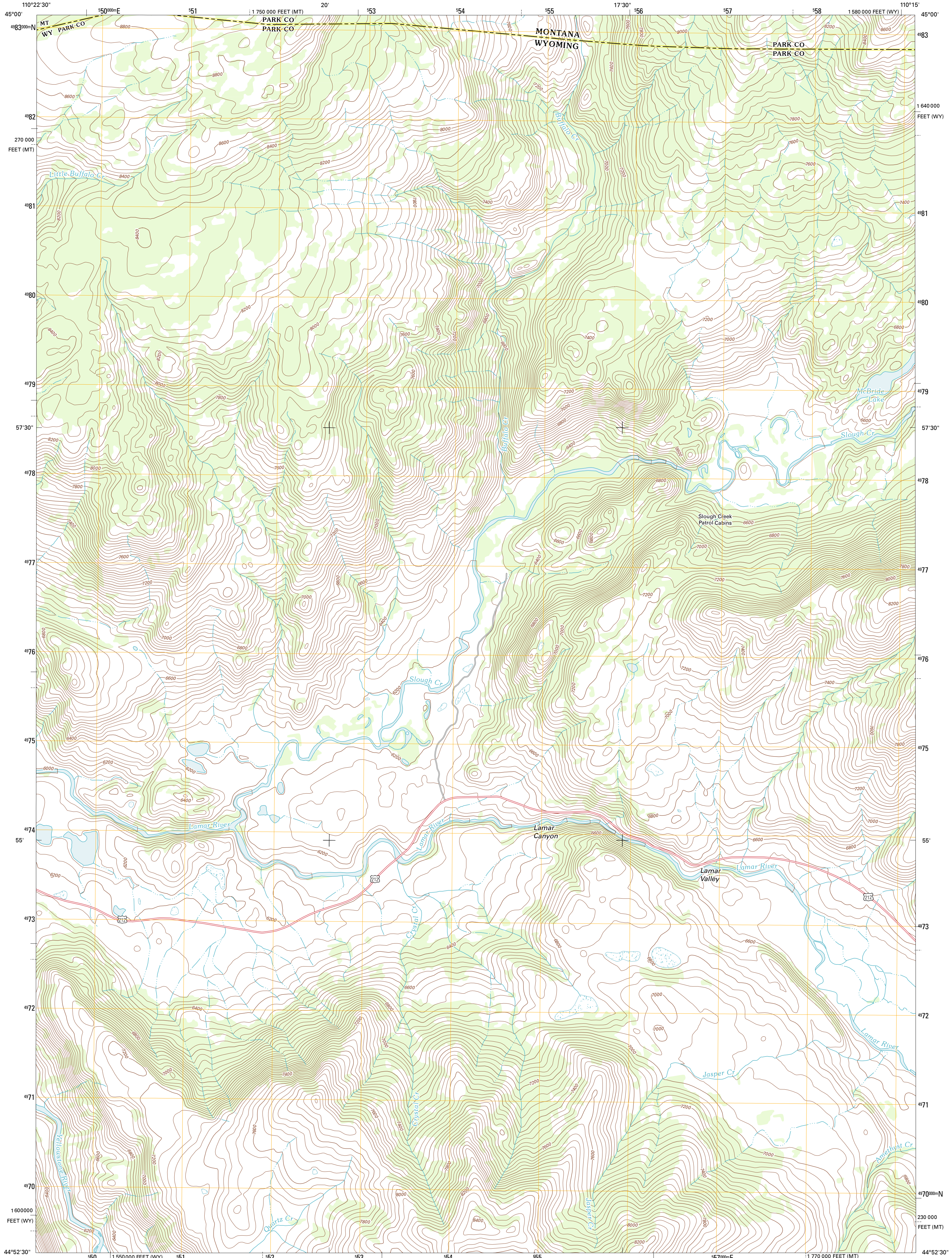




U.S. DEPARTMENT OF THE INTERIOR
U. S. GEOLOGICAL SURVEY



LAMAR CANYON QUADRANGLE
WYOMING-MONTANA
7.5-MINUTE SERIES

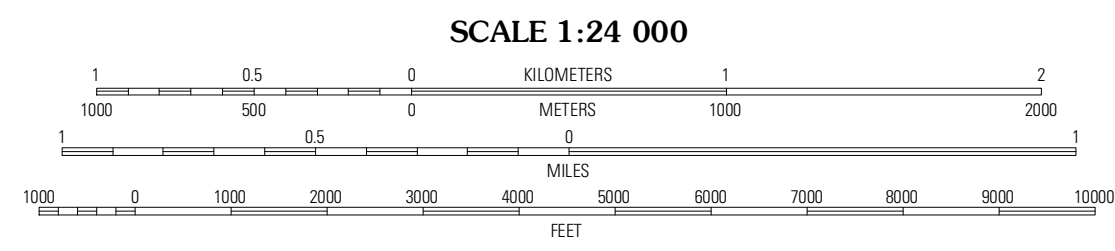


Produced by the United States Geological Survey
North American Datum of 1983 (NAD83)
World Geodetic System of 1984 (WGS84). Projection and
1000-meter grid: Universal Transverse Mercator, Zone 12T
10 000-foot ticks: Wyoming Coordinate System of 1983
(west central zone), Montana Coordinate System of 1983

Imagery.....©2006-2011 NAIP, July 2009
Roads.....©2006-2011 TomTom
Names.....©2011 GNS
Hydrography.....National Hydrography Dataset, 2009
Contours.....National Elevation Dataset, 1999
Boundaries.....Census, BWC, IBC, USGS, 1972 - 2010
Public Land Survey System.....BLM, 2006 - 2008

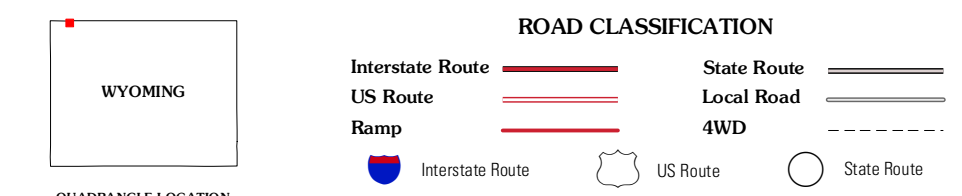
UTM GRID AND 2012 MAGNETIC NORTH
DECLINATION AT CENTER OF SHEET

U.S. National Grid
100,000m Square ID
WD
Grid Zone Designation
12T



CONTOUR INTERVAL 40 FEET
NORTH AMERICAN VERTICAL DATUM OF 1988

This map was produced to conform with the
National Geospatial Program US Topo Product Standard, 2011.
A metadata file associated with this product is draft version 0.6.3



QUADRANGLE LOCATION

Specimen Creek	Hammond Peak	Roundhead Butte
Tower Junction	Lamar Canyon	Mount Hornaday
Mount Washburn	Amethyst Mountain	Opal Creek

ADJOINING 7.5 QUADRANGLES

LAMAR CANYON, WY-MT
2012