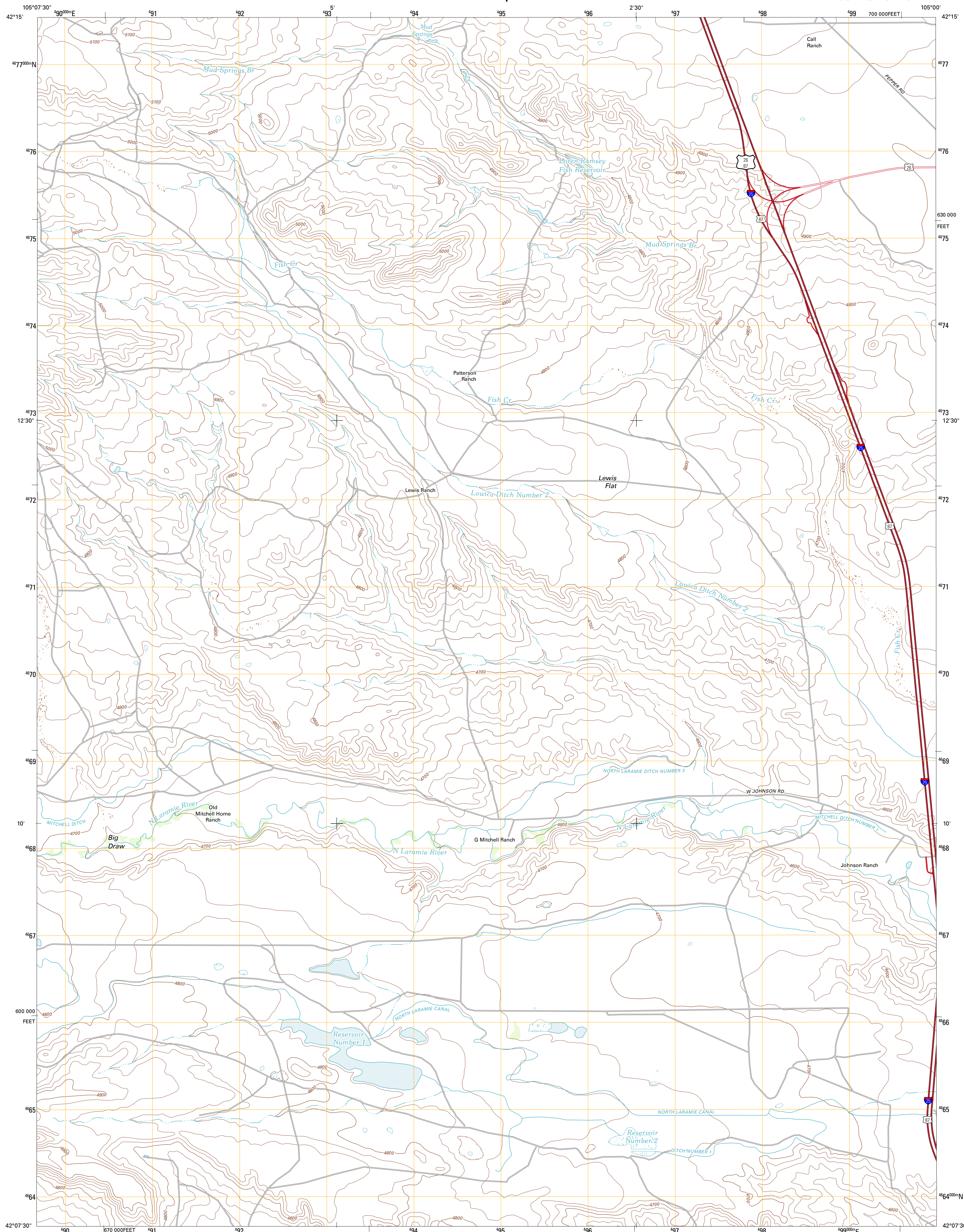




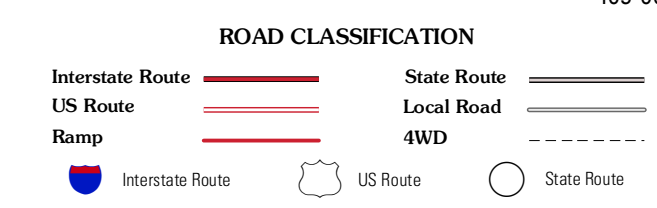
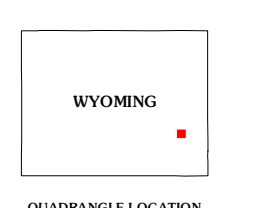
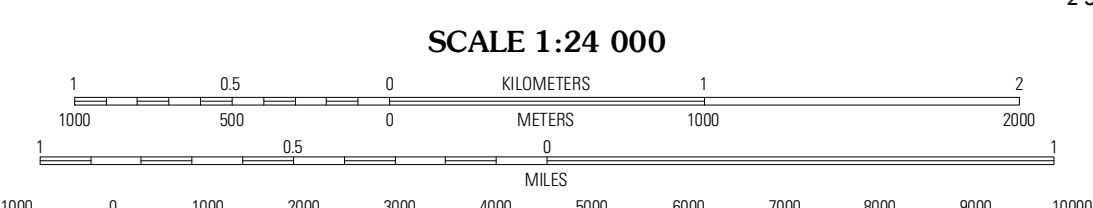
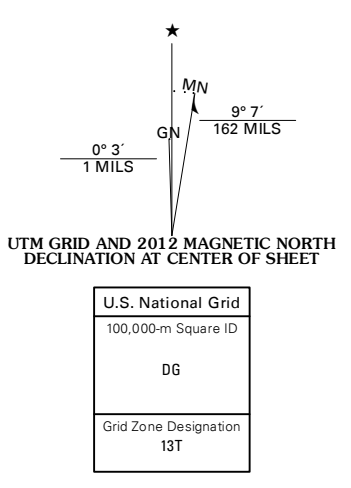
U.S. DEPARTMENT OF THE INTERIOR
U. S. GEOLOGICAL SURVEY



LEWIS FLAT QUADRANGLE
WYOMING-PLATTE CO.
7.5-MINUTE SERIES



Produced by the United States Geological Survey
North American Datum of 1983 (NAD83)
World Geodetic System of 1984 (WGS84). Projection and
1 000-meter grid: Universal Transverse Mercator, Zone 13T
10 000-foot ticks: Wyoming Coordinate System of 1983 (east
zone)



Imagery:.....NIP, August 2009
Roads:.....©2006-2011 TomTom
Names:.....GNIS, 2011
Hydrography:.....National Hydrography Dataset, 2009
Contours:.....National Elevation Dataset, 2007
Boundaries:.....Census, BWC, BIC, USGS, 1972 - 2010
Public Land Survey System:.....BLM, 2006 - 2008

CONTOUR INTERVAL 20 FEET
NORTH AMERICAN VERTICAL DATUM OF 1988

This map was produced to conform with the
National Geospatial Program US Topo Product Standard, 2011.
A metadata file associated with this product is draft version 0.6.3

QUADRANGLE LOCATION

Cottonwood Falls	Coleman Butte	Herman Ranch
Johnson Mountain	Lewis Flat	Dwyer
Highower SW	Highower	Wheatland

LEWIS FLAT, WY
2012

ADJOINING 7.5' QUADRANGLES