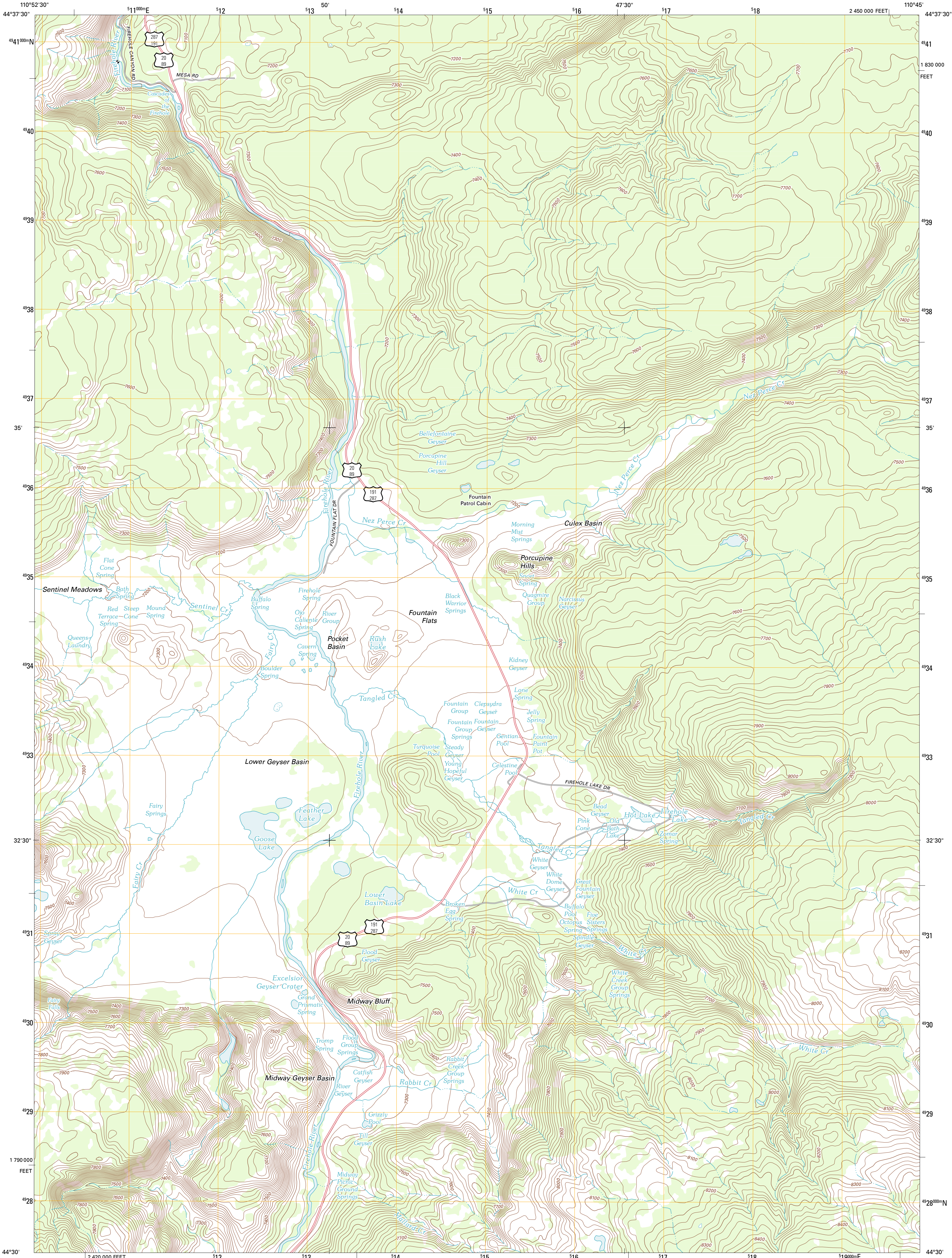




U.S. DEPARTMENT OF THE INTERIOR  
U. S. GEOLOGICAL SURVEY

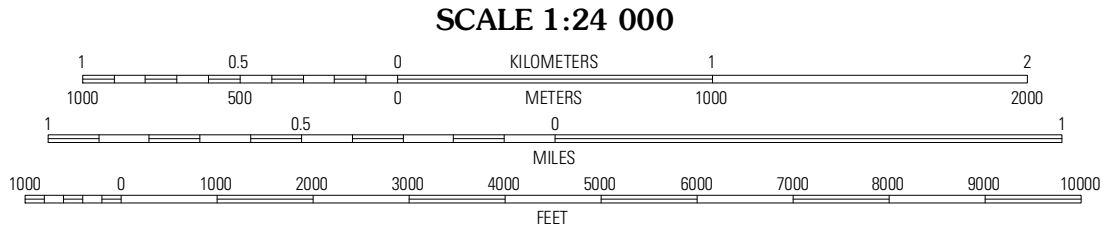
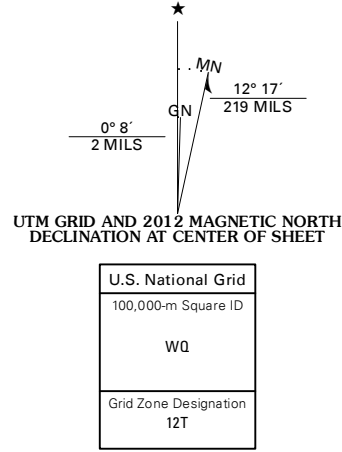


LOWER GEYSER BASIN QUADRANGLE  
WYOMING-TETON CO.  
7.5-MINUTE SERIES

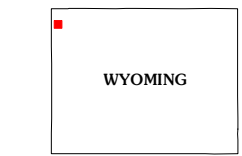


Produced by the United States Geological Survey  
North American Datum of 1983 (NAD83)  
World Geodetic System of 1984 (WGS84). Projection and  
1 000-meter grid: Universal Transverse Mercator, Zone 12T  
10 000-foot ticks: Wyoming Coordinate System of 1983  
(west zone)

Imagery.....NAIP, August 2009  
Roads.....©2006-2011, TomTom  
Names.....GNSS, 2011  
Hydrography.....National Hydrography Dataset, 2009  
Contours.....National Elevation Dataset, 1999  
Boundaries.....Census, IBWC, IBC, USGS, 1972-2010  
Public Land Survey System.....BLM, 2006-2008



CONTOUR INTERVAL 20 FEET  
NORTH AMERICAN VERTICAL DATUM OF 1988  
This map was produced to conform with the  
National Geospatial Program US Topo Product Standard, 2011.  
A metadata file associated with this product is draft version 0.6.3



Mount Jackson	Madison Junction	North Junction
Buffalo Meadows	Lower Geyser Basin	Mary Lake
Summit Lake	Old Faithful	Craig Pass

ROAD CLASSIFICATION  
Interstate Route  
US Route  
Ramp  
State Route  
Local Road  
4WD  
US Route  
State Route

LOWER GEYSER BASIN, WY  
2012